

3. *Hedychium* aff. *hirsutissimum* Holtt. (specimen, Kerr 12540) -
Fig. 3

Leafy stem c 1 m tall. *Leaves*: blades elliptic oblong, 22-39x5-7 cm, the apex shortly acuminate, the base acute, cuneate, upper surface sparsely hairy, lower glabrous, petiole 1-4 cm long; ligule oblong, 1-2.5 cm long, densely hairy, the apex rounded. *Inflorescence* : spike 20-30 cm long, peduncle 3 - 4 cm long, rachis densely hairy; bracts not imbricate, oblong c. 2x1 cm, densely hairy, the apex

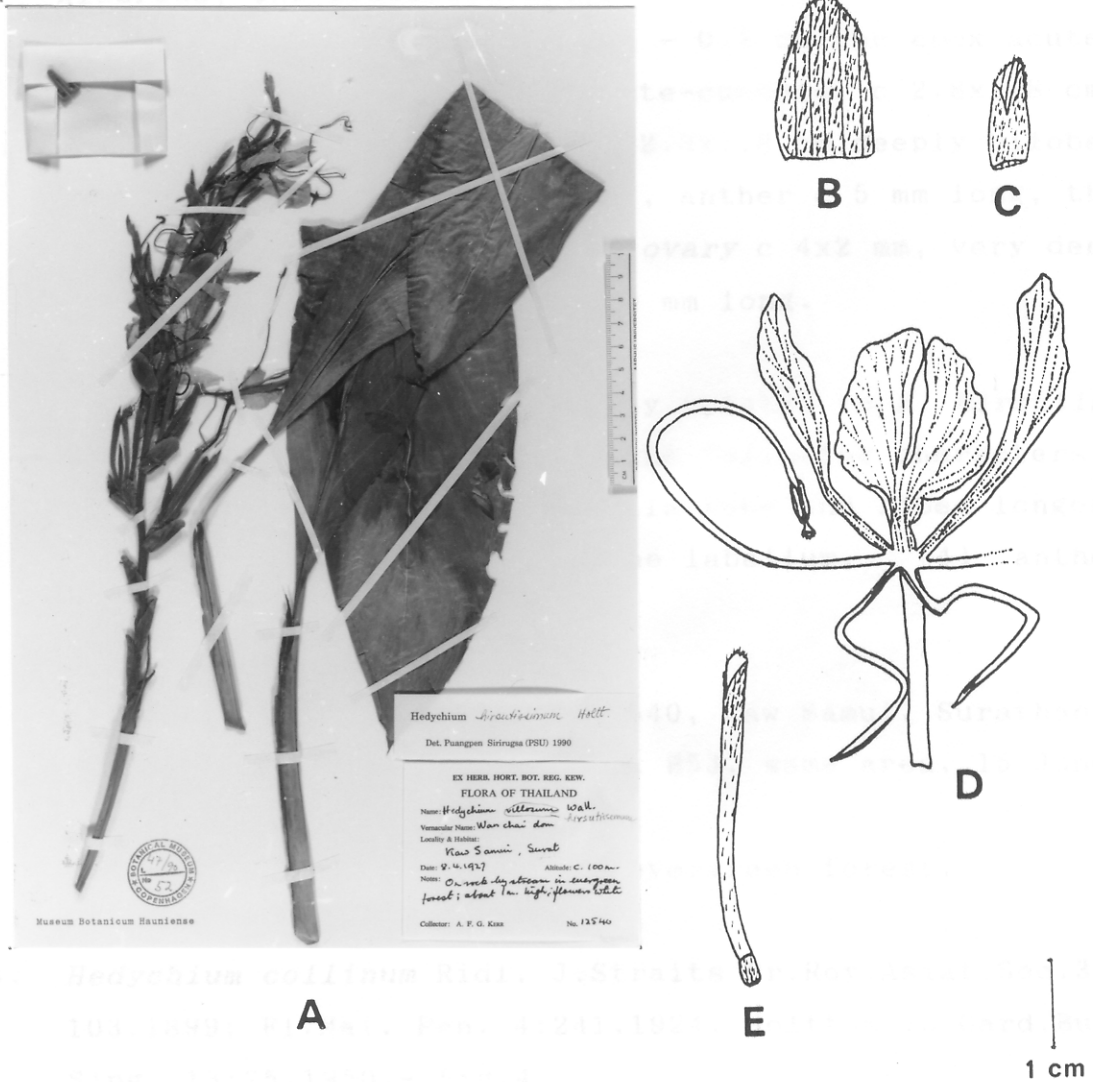


Fig. 3. *Hedychium* aff. *hirsutissimum* - A: specimen, Kerr 12540;
 B: bract; C: bracteole; D: flower; E: calyx and ovary.

rounded; bracteoles folded, broadly ovate, c 1.4x1 cm, the apex acute. *Flowers* 3-5 in each bract; *calyx* c 4 cm long, densely hairy, the apex 3-lobed; *corolla-tube* c 6 cm long, glabrous, the lobes linear, c 3.5 x 0.2 cm; *staminodes* oblanceolate-cuneate, c 4 x 0.5 - 0.7 cm, the apex acute; *labellum* shortly clawed, obovate-cuneate, c 2.8x1.8 cm, the claw c 0.5 cm, the blade c 2.3x1.8 cm, deeply bilobed; *stamen*: filament c 6.5 cm long, anther c 5 mm long, the basal appendages c 2 mm long; *ovary* c 4x2 mm, very densely hairy; *stylodes* linear, c 3 mm long.

Note.- This species is closely related to *H. hirsutissimum* Holtt. but differs by the following characters : (1) leaves smaller, (2) corolla-tube and lobes longer, (3) staminodes longer than the labellum, (4) anther longer.

Specimens examined.- Kerr 12540, Kaw Samui, Surathani, alt. c 100 m, 8 April 1927; Put 853, same area, 15 June, 1927.

Ecology.- On rocky stream in evergreen forest.