

6. *Hedychium longicornutum* Griff.ex Bak. in Hook.f. Fl. Br. Ind. 6:228. 1892; Ridl. J. Straits Br.Roy Asiat.Soc. 32: 100. 1899; Schum. in Pflanzenreich 4.46:55.1904;Ridl.Fl. Mal.Pen.4:242.1924.-Fig.6

Epiphytic, leafy stem c 1 m tall. *Leaves* sessile; blades elliptic-oblong or oblanceolate-oblong, (27-)30-37x5-7 cm the apex acuminate, the base acute, cuneate, both surfaces glabrous; ligule lanceolate, 5-6x1 cm, sparsely hairy, the apex acute. *Inflorescence*: spike compact, c 8 cm long, peduncle short; bracts imbricate, lanceolate, the apex acute, 2-3x0.7-1 cm, brownish hairy; bracteoles tubular, 1.5-1.8 cm long, brownish hairy. *Flowers* dense, one in each bract; *calyx* 2.8-3.2 cm long, hairy, the apex 3-dentate, ciliate; *corolla-tube* 2.8-3 cm long, lobes linear, 5-6 cm long; *staminodes* yellow, linear, curled backwards, c 2.5 x 0.5 cm; *labellum* yellow, c 2 cm long, deeply divided, each lobe linear, c 2x0.4 cm, curled backwards; *stamen*: filament c 6.5 cm long, anther linear, slightly

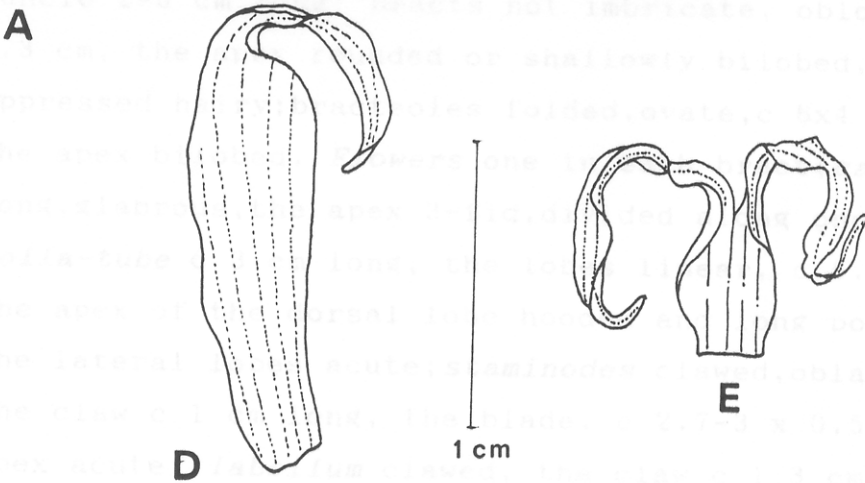
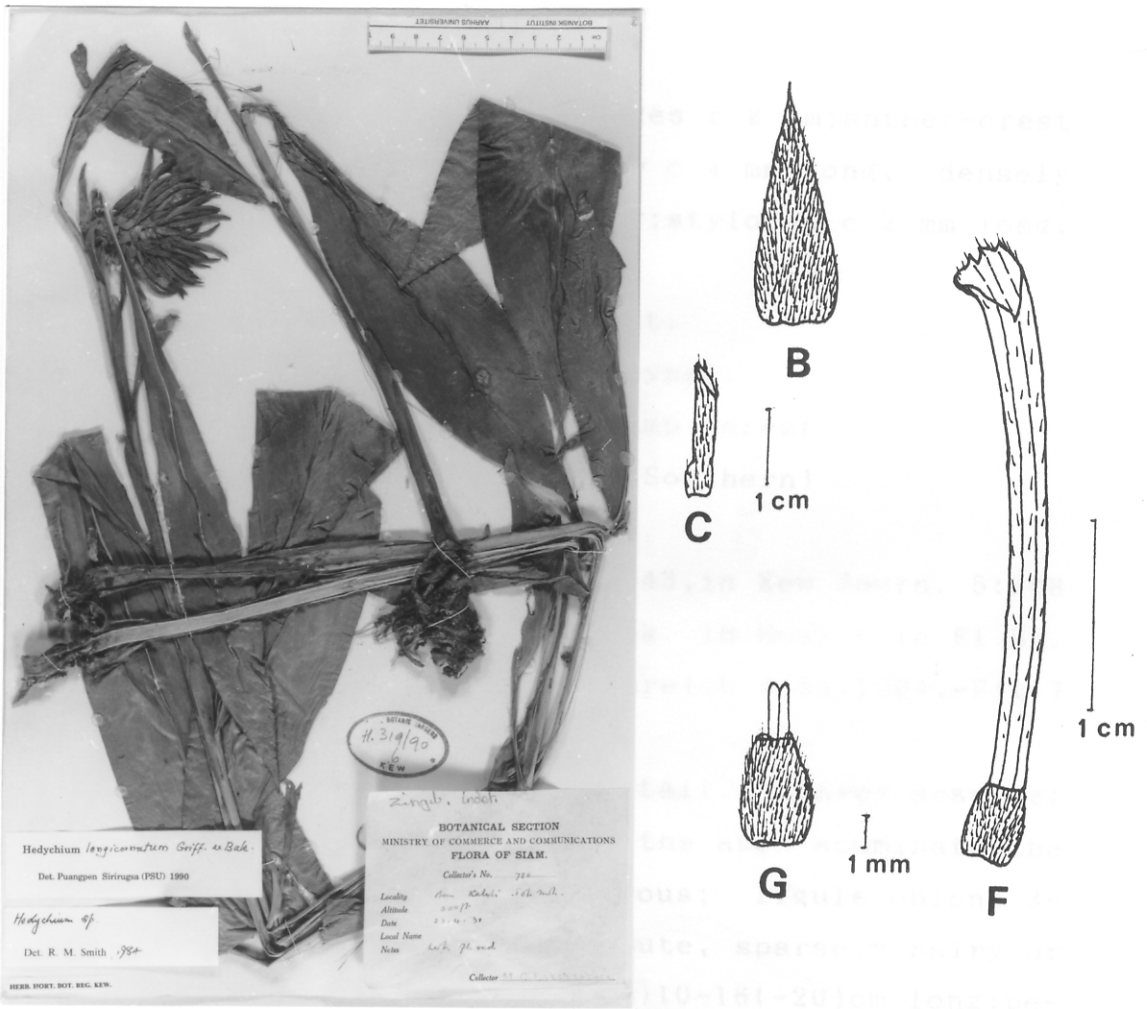


Fig.6. *Hedychium longicornutum* - A: specimen, Lakshnakara 780; B: bract; C: bracteole; D: one of the staminodes; E: labellum; F: calyx and ovary; G: ovary and stylodes.

curved, c 1 cm long, basal appendages c 2 mm; anther-crest slightly beyond the thecae; *ovary* c 4 mm long, densely golden-brownish hairy; ovules many; stylodes c 2 mm long.

Thailand.- PENINSULAR : Narathiwat.

Distribution.- Malay Peninsula (type).

Ecology.- Epiphytic, in peat swamp forest.

Vernacular.- Put duean (ปุดเดือน) (Southern)