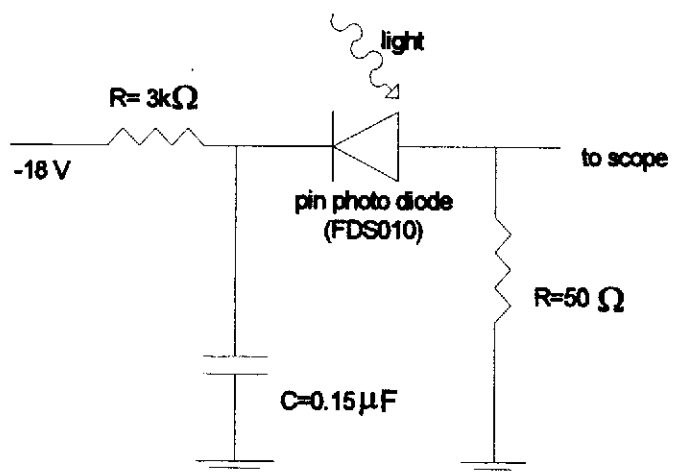


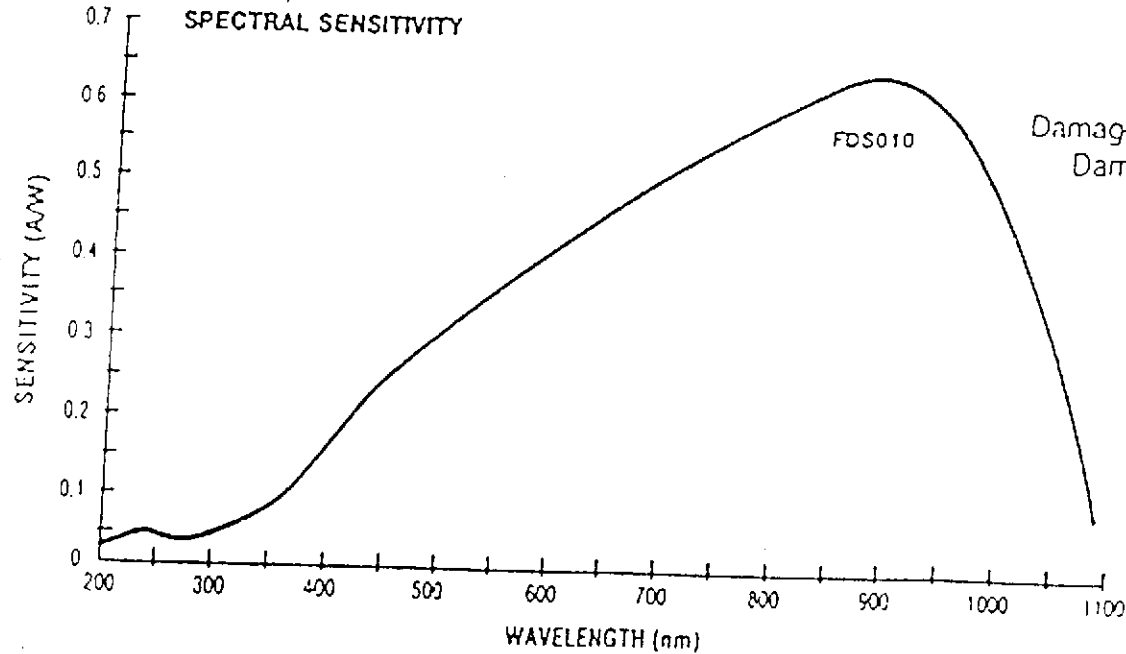
ภาคผนวก ง

แสดงวงจรรับและรายละเอียดของ photodiode เบอร์ FDS010



FDS010 SILICON PHOTODIODE

The FDS010 is a high-speed silicon photodiode with a spectral response from 185nm to over 1100nm. This photodiode has a PIN structure which provides fast rise and fall times with a bias of 20V.



Spectral Response: 185-1100nm
Active Area: 1.0mm²
Rise Time: <1ns (50 ohms @ 20V bias)
Fall Time: Same as Rise Time
NEP: $5 \times 10^{-14} \text{ W}/\sqrt{\text{Hz}}$ (@ 20V bias)
Dark Current: 2.5nA (@ 20V bias)
Package: T05
Damage Threshold CW: 100mW
Damage 10ns Pulse: 500mJ/cm²
Bias Voltage: 20V

