



Order Key.....
BIB Key.....

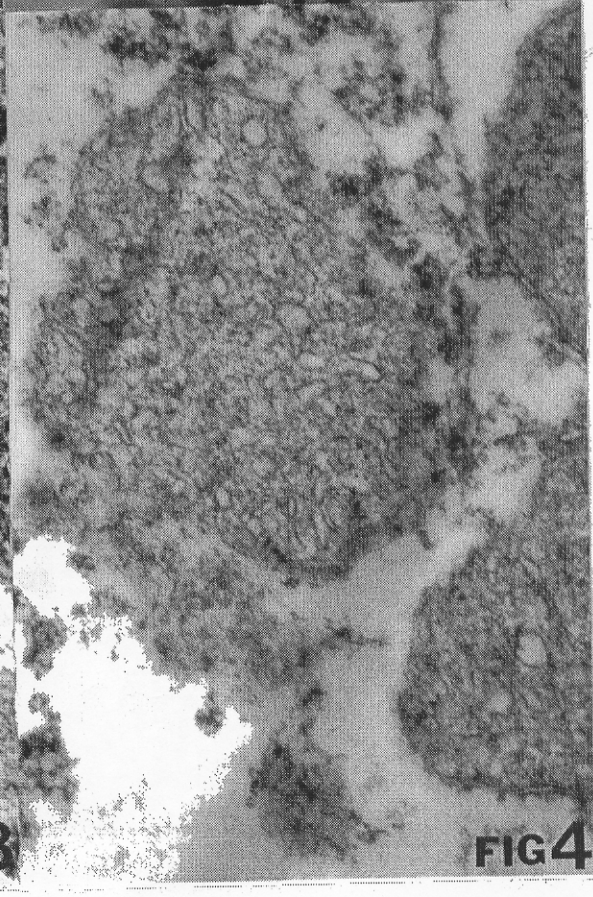
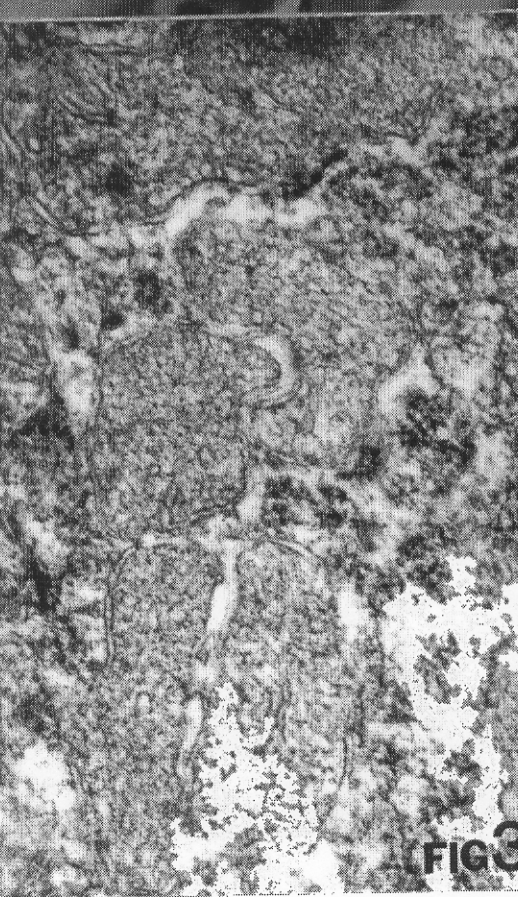
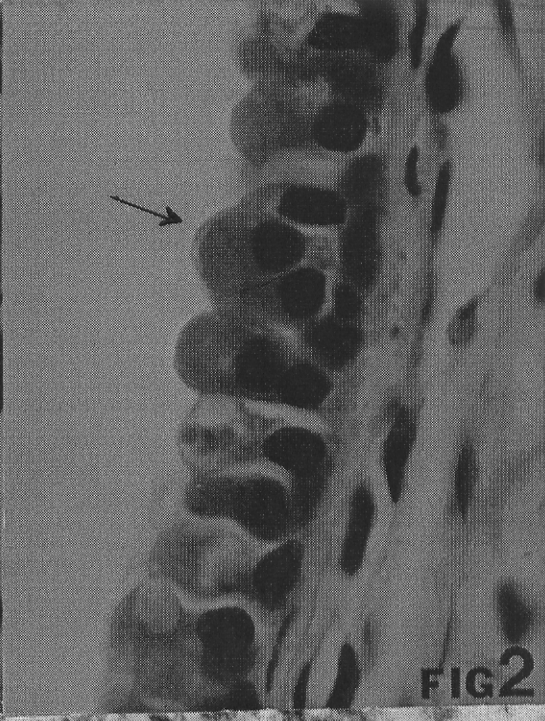
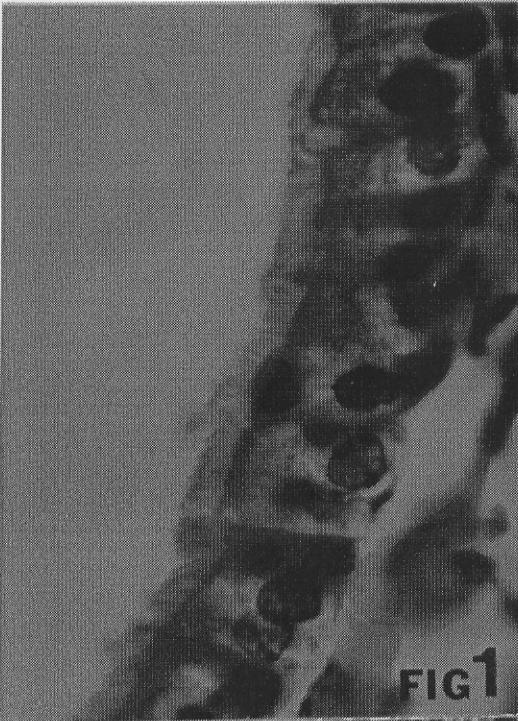


Fig 1 The tracheal mucosa of normal mice (x400).

Fig 2 The mucous of (arrow) of tracheal mucosa (x400)

Fig 3 The herniation and swollen cristae of tracheal mucosa (x60480)

Fig 4 The swollen cristae of mitochondria (x67760)

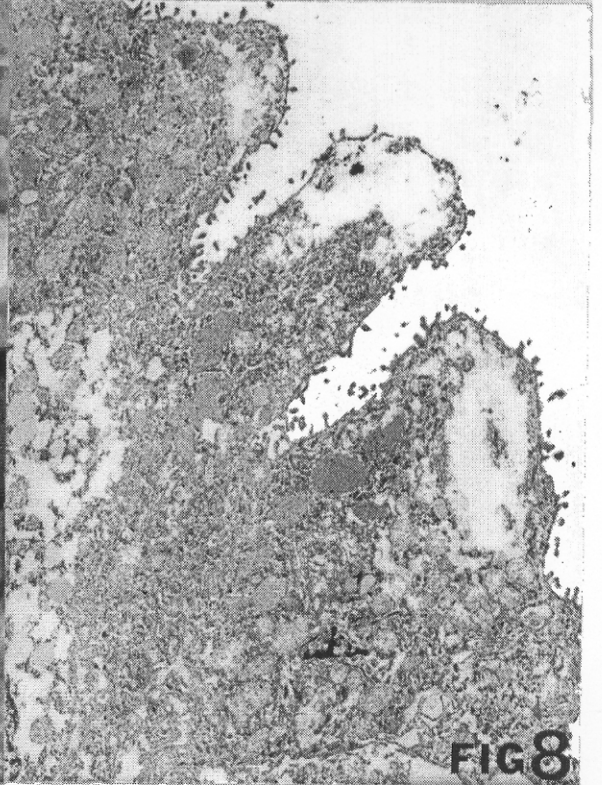
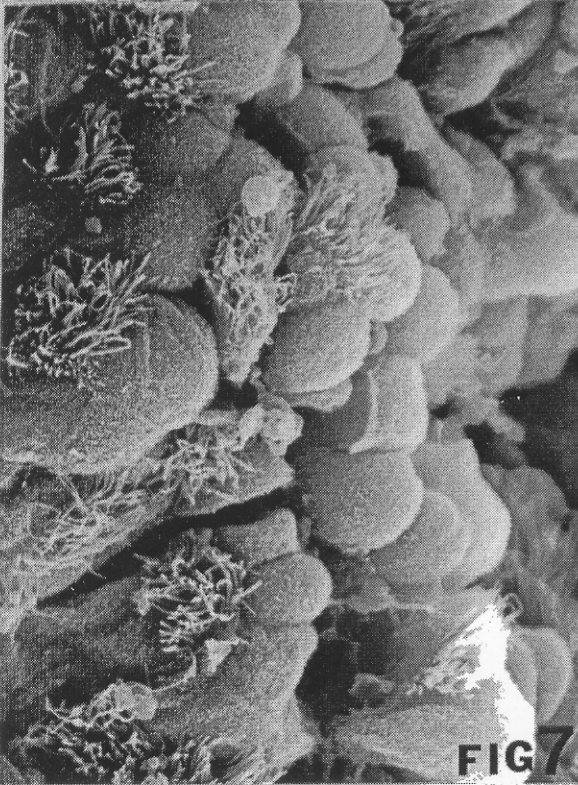
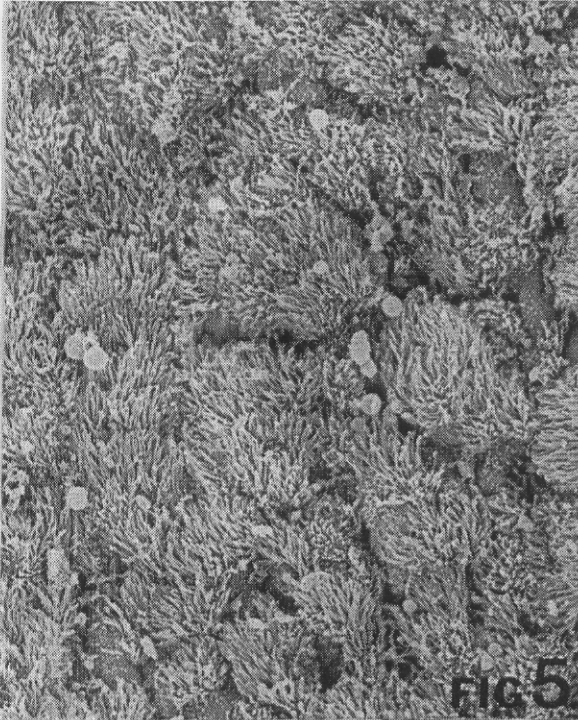


Fig 5 The tracheal mucosal surface of normal mice(x6050)

Fig 6 The mucous round domes scatter on luminal surface of tracheal mucosa (x6050)

Fig 7 The ciliated cell of tracheal mucosa (x22990)

Fig 8 The mucous accumulation in the ciliated cell of tracheal mucosa (x60480)