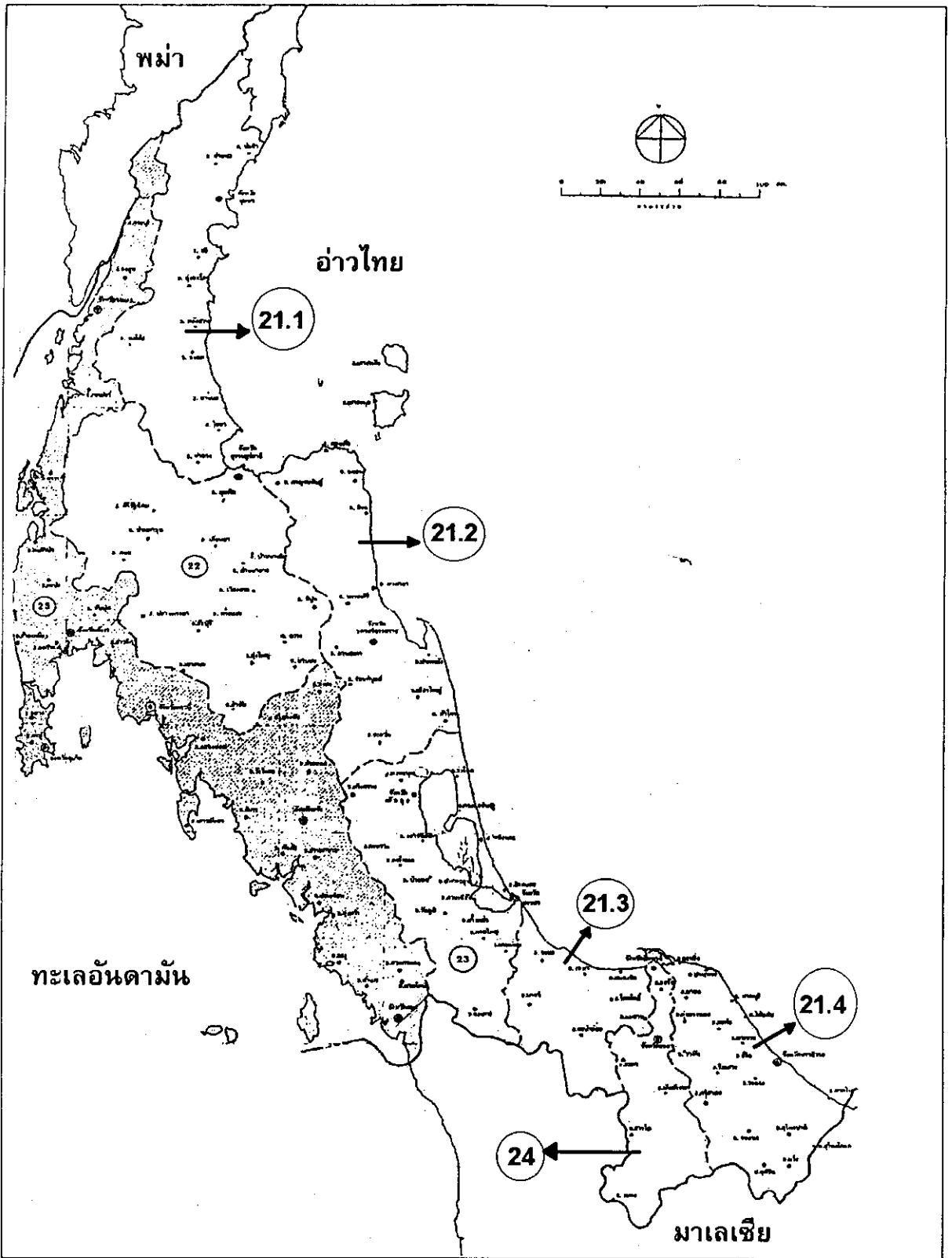


ตารางที่ 2 บัญชีรายชื่อพรรณน้ำจืดและการกระจายตามสัดส่วนจำนวนร้อยละของสถานีที่สำรวจในลุ่มน้ำภาคใต้ฝั่งตะวันออกและลุ่มน้ำแม่ น้ำปัตตานี

ชื่อวิทยาศาสตร์	ร้อยละความถี่ของสถานีสำรวจ
POTAMIDAE	
<i>Demanietta cf. huahin</i> Yeo, Naiyanetr & Ng, 1999	0.51
<i>Demanietta renongensis</i> (Rathbun, 1905)	4.1
<i>Demanietta nakhonsi</i> Yeo, Naiyanetr & Ng, 1999	9.1
<i>Johora</i> sp	3.08
<i>Stoliczia ekavibhathai</i> Ng & Naiyanetr, 1986	3.59
<i>Stoliczia panhai</i> Ng & Naiyanetr, 1986	10.77
<i>Stoliczia</i> sp.	1.03
<i>Terrapotamon</i> sp.	1.54
GECARCINUCIDAE	
<i>Phricotelphusa aedes</i> Kemp, 1923	0.51
<i>Phricotelphusa cf. aedes</i> Kemp, 1923	2.05
<i>Phricotelphusa ranongi</i> Naiyanetr, 1982	3.59
PARATHELPHUSIDAE	
<i>Heterothelphusa insolita</i> Ng & Lim, 1986	6.15
<i>Heterothelphusa fatum</i> Ng, 1997	1.03
<i>Parathelphusa maculata</i> De Man, 1879	8.72
<i>Salangathelphusa anophrys</i> (Kemp, 1923)	6.15
<i>Sayamia melanodactylus</i> Ng, 1997	1.03
<i>Sayamia sexpunctata</i> (Lanchester, 1906)	5.13
<i>Siamthelphusa improvisa</i> (Lanchester, 1901)	58.46
GRAPSIDAE	
<i>Geosesarma foxi</i> (Kemp, 1918)	0.51

ฝ่ายหอสมุด
คุณหญิงหลง อรรถกระวีสุนทร



รูปที่ 1 แผนที่ลุ่มน้ำภาคใต้ฝั่งตะวันออก(21.1-21.4) และลุ่มน้ำแม่น้ำปัตตานี (24)
Figure 1 Eastern River Basin and Pattani River Basin of southern Thailand



Figure 2 - POTAMIDAE: *Demanietta renongensis* (Rathbun, 1905)

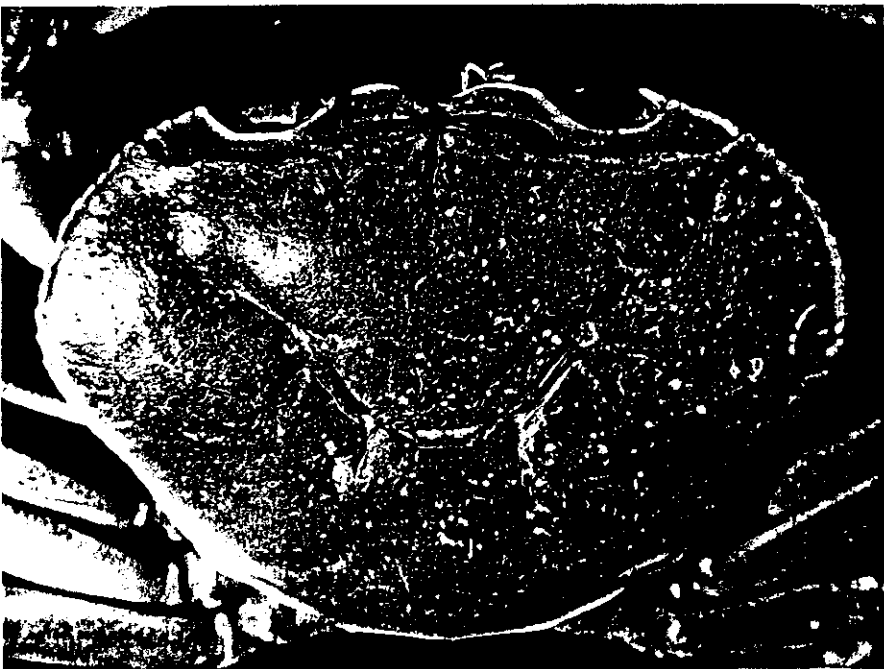


Figure 3 - POTAMIDAE: *Demanietta nakhonsi* Yeo, Naiyanetr & Ng, 1999

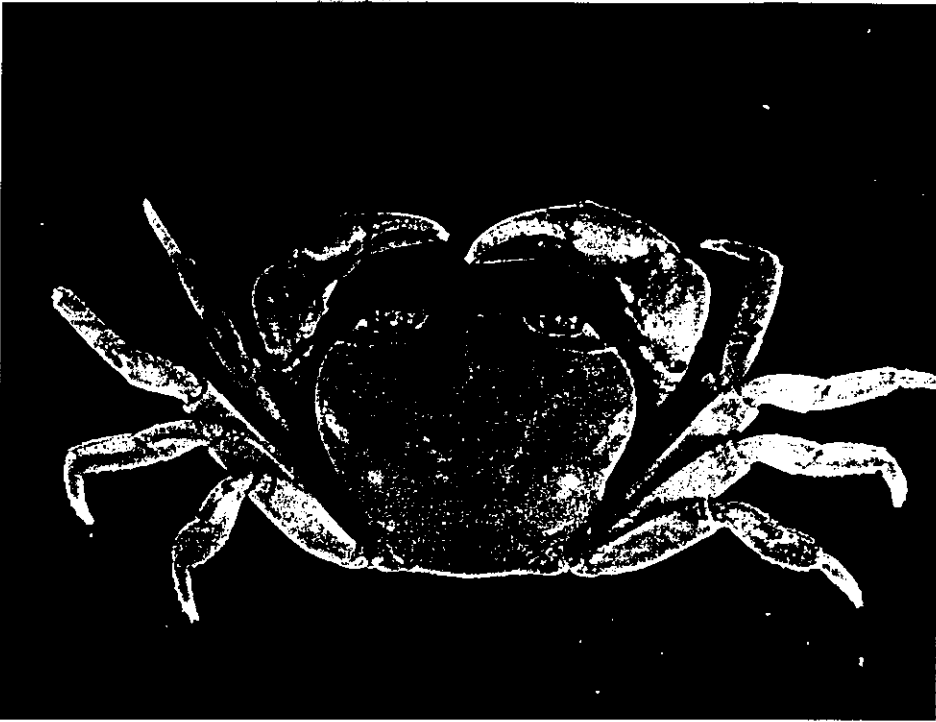


Figure 4 - POTAMIDAE: *Stoliczia ekavibhathai* Ng & Naiyanetr, 1986

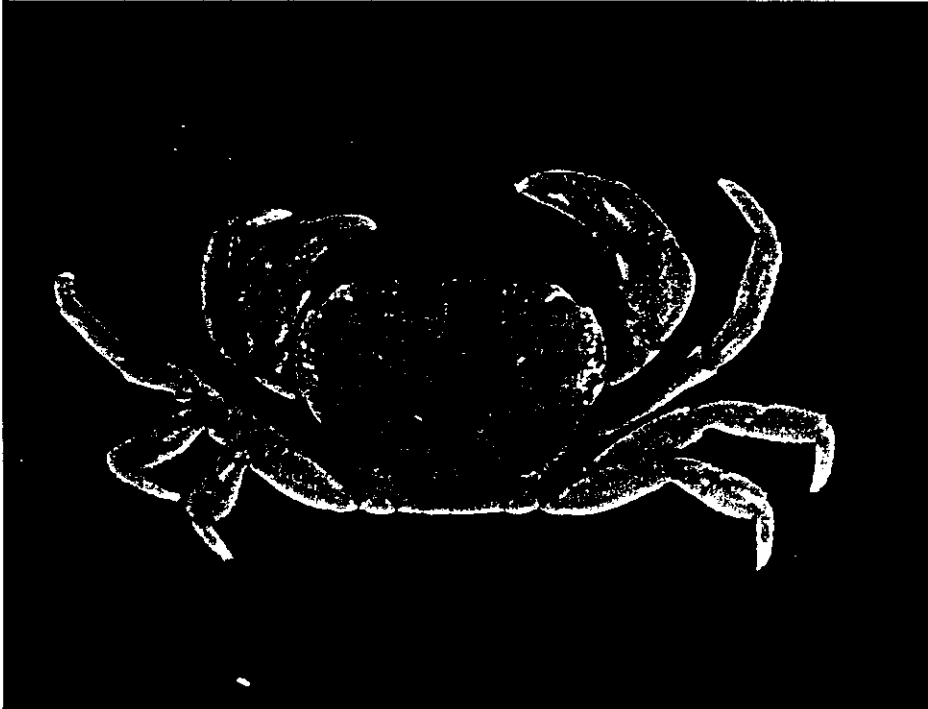


Figure 5 - POTAMIDAE: *Stoliczia panhai* Ng & Naiyanetr, 1986

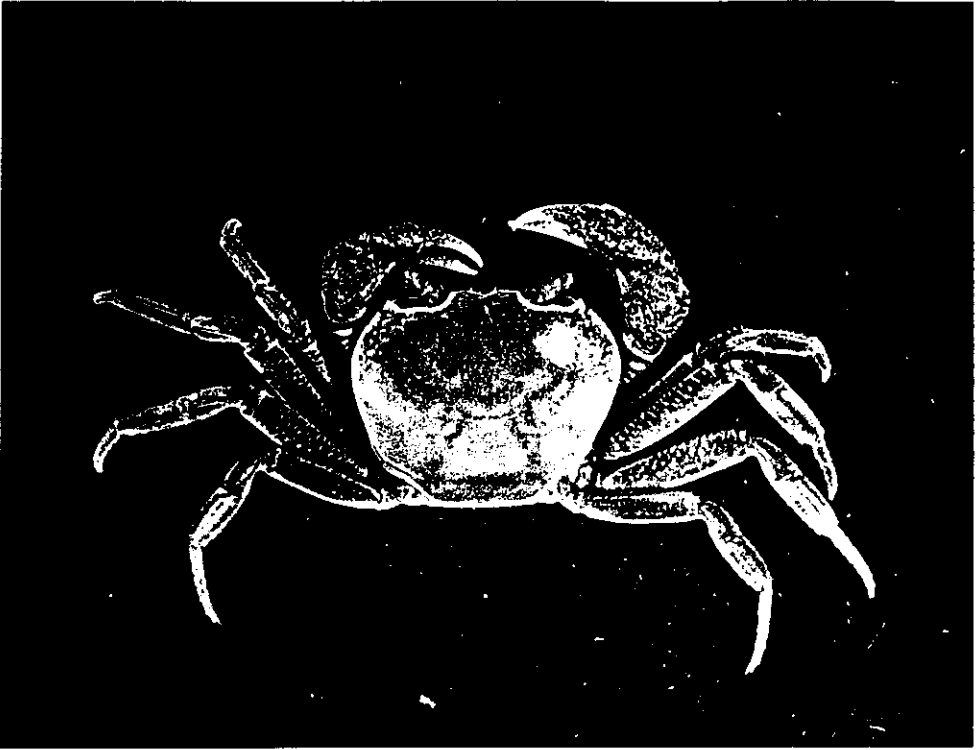


Figure 6 - POTAMIDAE: *Terrapotamon* sp.



Figure 7 - GECARCINUCIDAE: *Phricotelphusa aedes* Kemp, 1923



Figure 8 - GECARCINUCIDAE: *Phricotelphusa ranongi* Naiyanetr, 1982

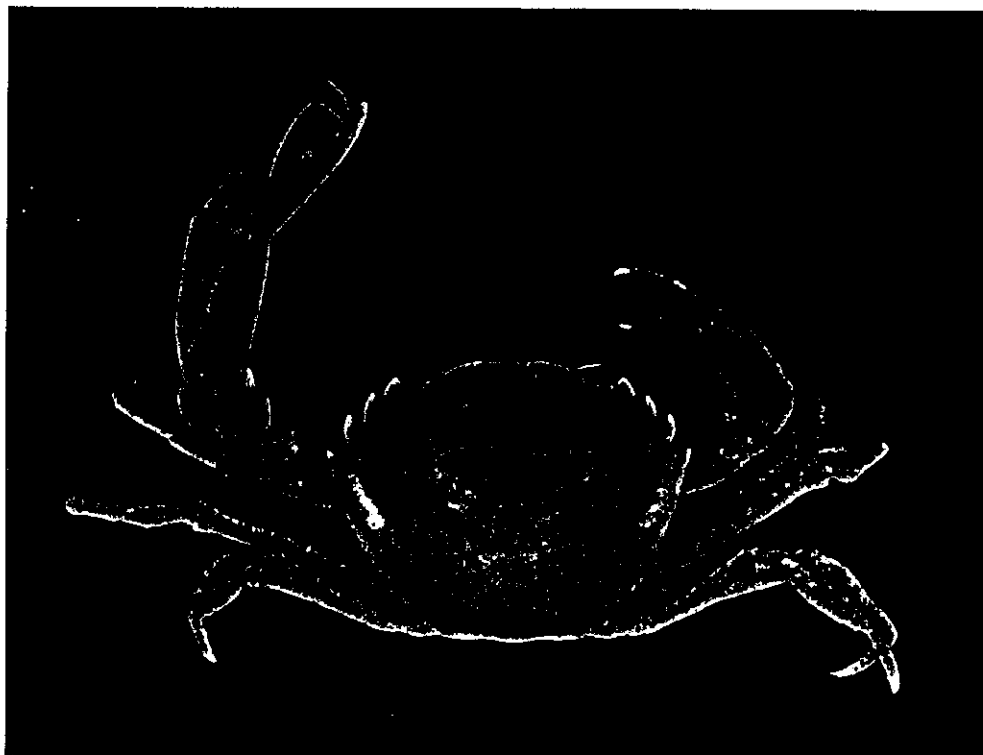


Figure 9 - PARATHELPHUSIDAE: *Heterothelphusa fatum* Ng, 1997

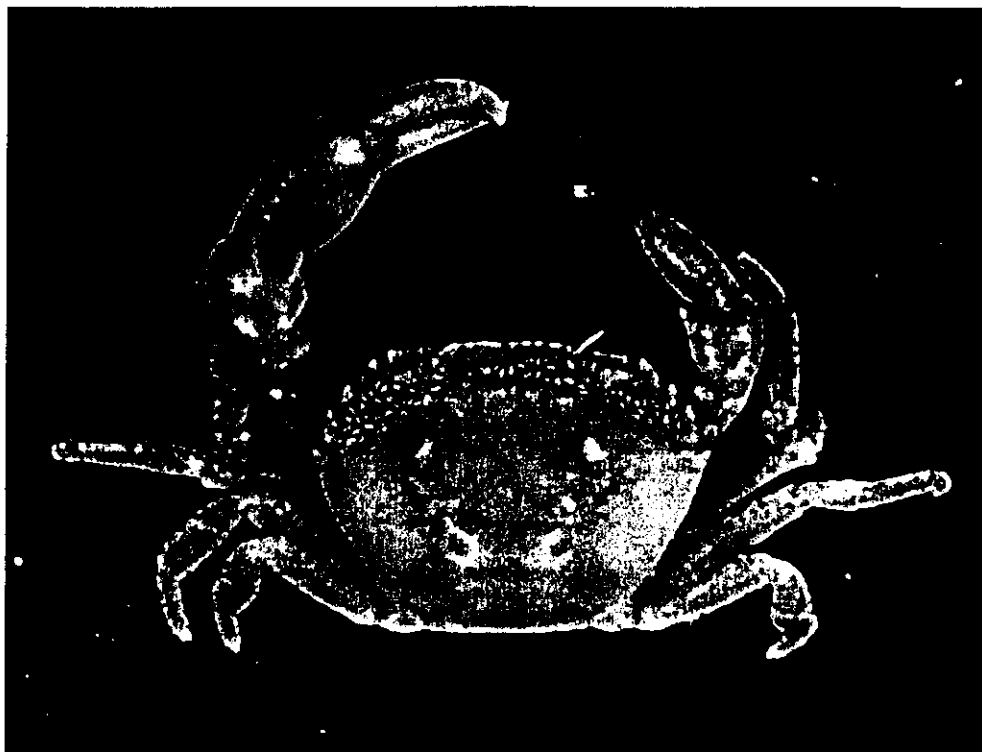


Figure 10 - PARATHELPHUSIDAE: *Heterothelphusa insolita* Ng & Lim, 1986



Figure 11 - PARATHELPHUSIDAE: *Parathelphusa maculata* De Man, 1879

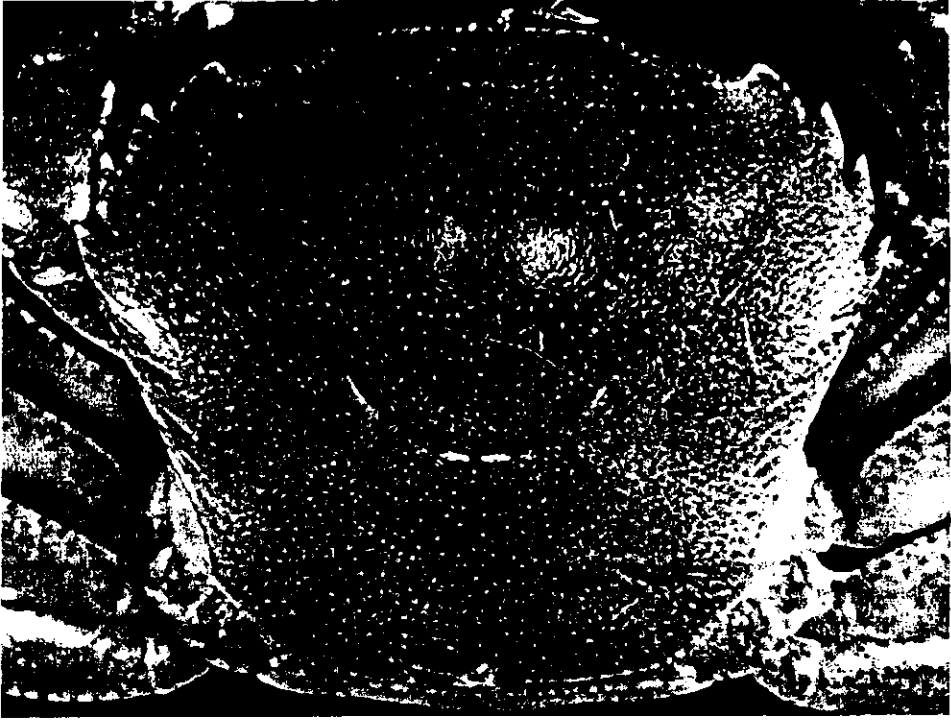


Figure 12 - PARATHELPHUSIDAE: *Salangathelphusa anophrys* (Kemp, 1923)

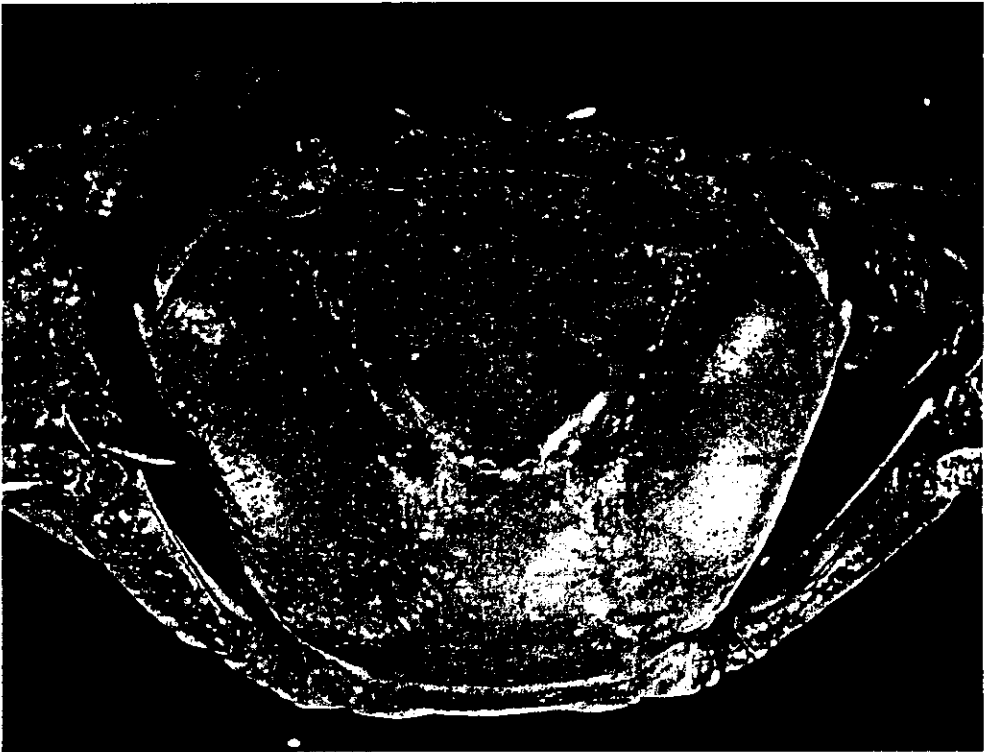


Figure 13 - PARATHELPHUSIDAE: *Sayamia sexpunctata* (Lanchester, 1906)

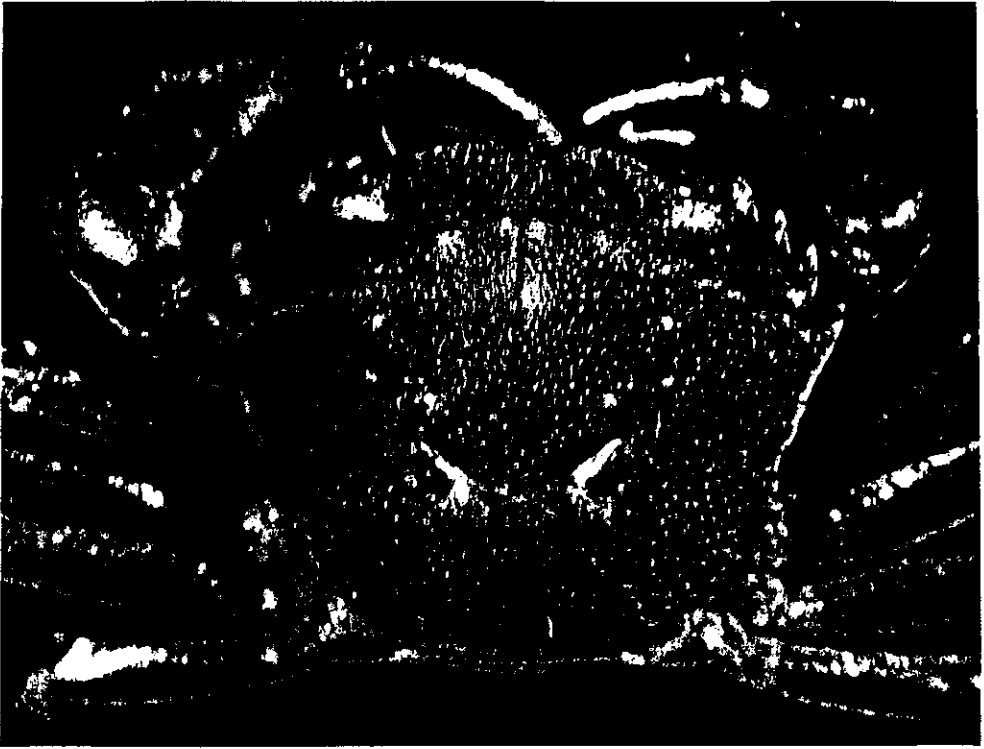


Figure 14 - PARATHELPHUSIDAE: *Siamthelphusa improvisa* (Lanchester, 1901)

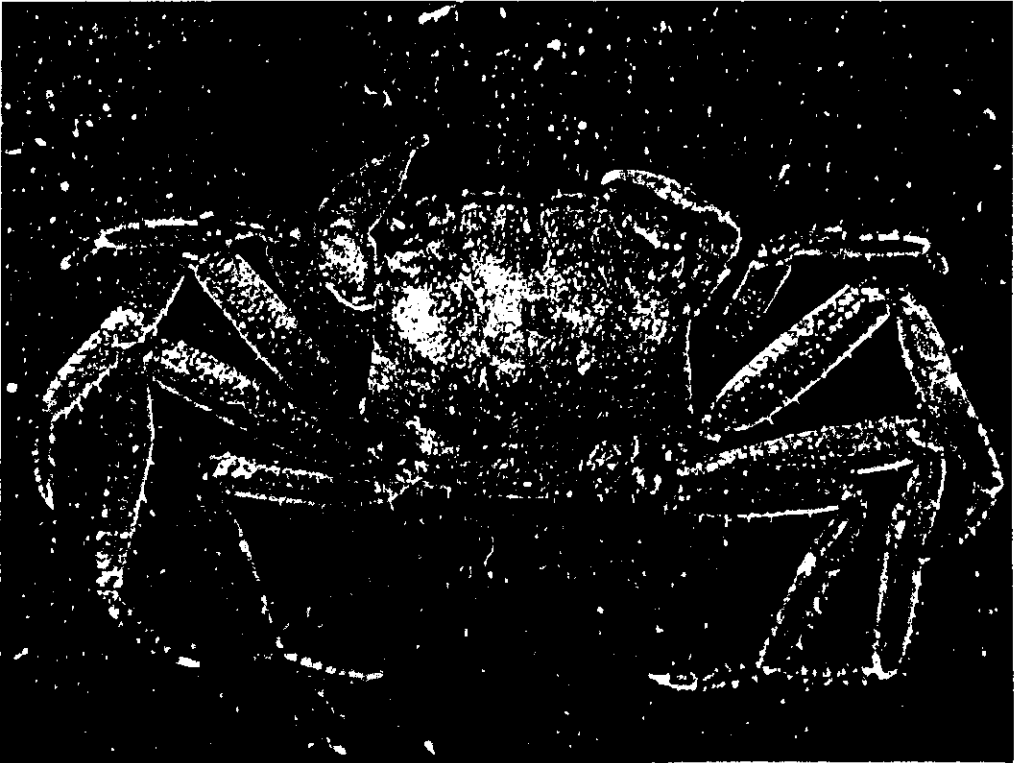


Figure 15 - GRAPSIDAE: *Geosesarma foxi* (Kemp, 1918)