

ภาคผนวก ข

==



Red brown shoulder and body feather



Red brown hackles and red face



Red brown with some gray color wing feathers



Red brown with some white sickles



Rose comb



Yellow shank

Figure 1 Phenotypic characteristics of indigenous chicken (Gai Dang)



Figure 2 Intensive production system where chickens were kept in house and provided concentrated feeds; (a) outside of chicken's house and (b) inside of chicken's house which divided into 12 blocks (23 chickens/block)

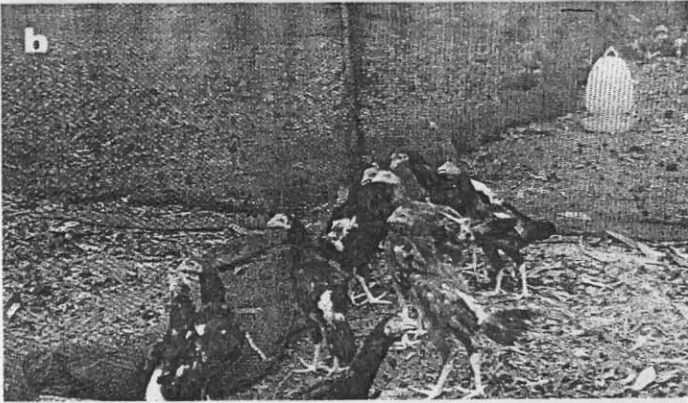


Figure 3 Extensive production system where chickens were allowed to scavenge on natural food around the homestead (18 meter squares) during the day and supplemented with concentrated feeds in the evening when they came back to roost and sheltered at night; (a) outside of chicken's house; (b) group of chicken scavenged on nature food in their homestead (12 blocks x 23 chickens)

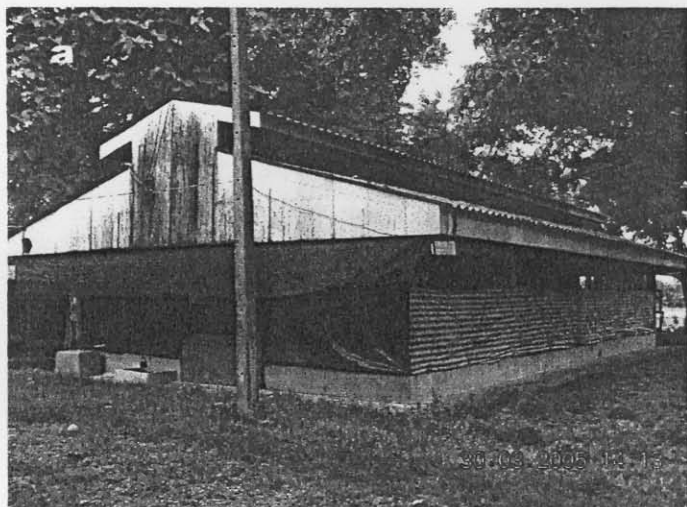


Figure 4 Broiler production system where chickens were kept in house and provided concentrated feeds; (a) outside of chicken's house and (b) inside of chicken's house which divided into 12 blocks (25 chickens/block)