

16. *Hedychium* aff. *griffithianum* Wall.- Fig.16

Leafy stem c 60 cm tall. *Leaves* sessile; blades elliptic, rarely elliptic-oblong, 15-25x8-11 cm, the apex acuminate, the base cuneate, the upper surface glabrous, the lower surface densely hairy; ligule c 1.5 cm long, bilobed, hairy. *Inflorescence* lax-flowered, from the lowest bract to the top c 11 cm long; the rachis visible, glabrous; peduncle c 7 cm long; bracts oblong, c 2.5 x 0.5 - 0.8 cm, the apex rounded with dense hairs; bracteoles lanceolate, c 1.1 x 0.5 cm, the apex acute with dense hairs. *Flowers* only one in each bract; *calyx* c 3 cm long, the tube long hairy, the apex shallowly bilobed, densely long hairy; *corolla-tube* c 7.5 cm long; the lobes linear, c 2.5 x 0.2 cm; *staminodes* linear, c 2.5x0.2 cm; *labellum* divided to the base, each lobe elliptic-oblong, c 2.0 x 0.4 cm; *stamen*: filament c 2.8 cm long, anther c 0.5 cm long, basal appendages c 1 mm long; *ovary* c 3x1.5 mm long, densely hairy, ovules few; *stylodes* c 1.5 mm long, the apex truncate. *Fruit* not seen.

Notes: This species is closely related to *H.griffithianum* Wall. but differs by the following characters: (1) no glands on the leaf surfaces, (2) densely hairy on the lower leaf surface, (3) smaller and deeper divided labellum, (4) small anther.

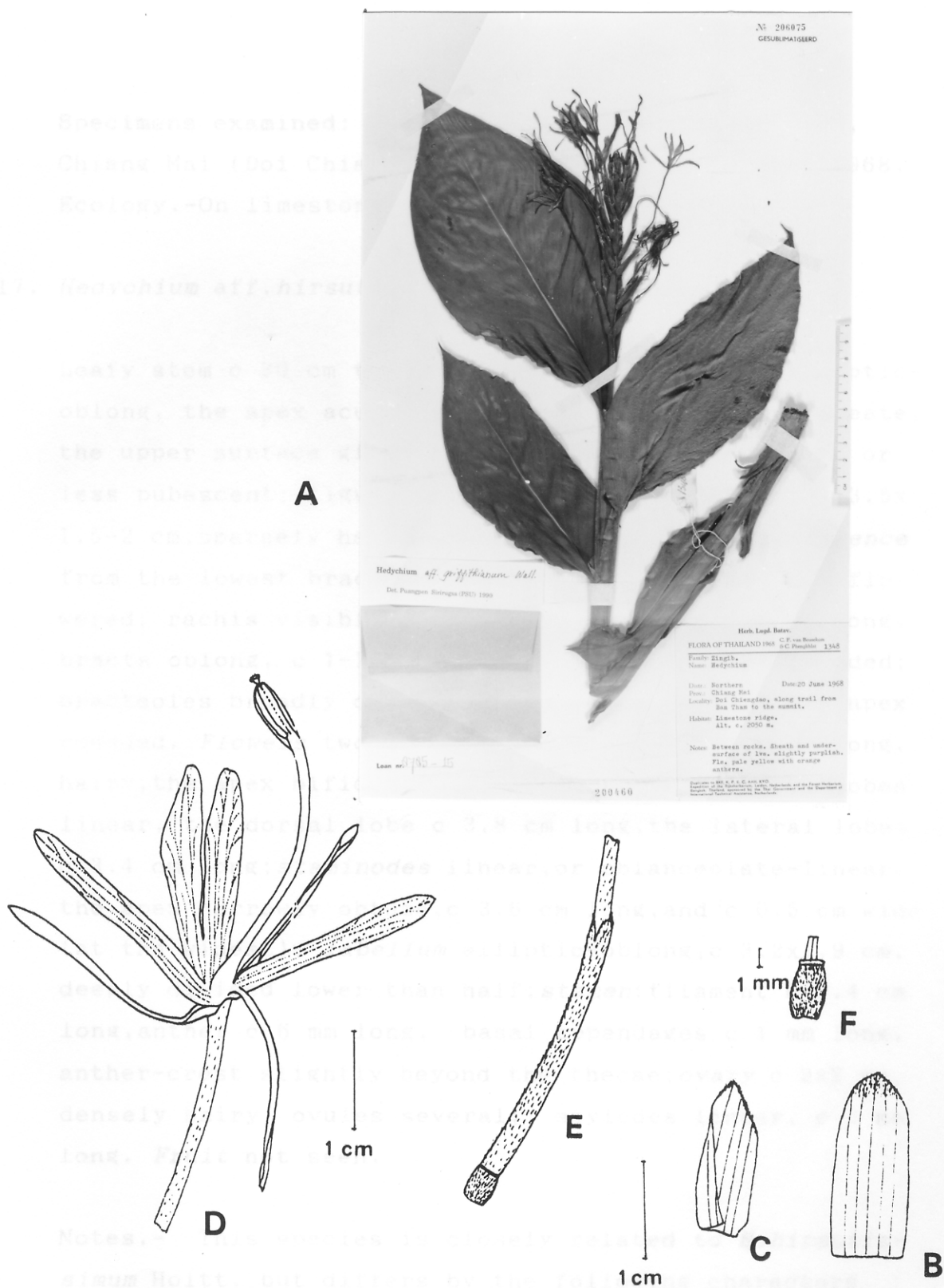


Fig. 16. *Hedychium* aff. *griffithianum* - A: specimen, Beusekom and Phengklai 1348; B: bract; C: bracteole; D: flower; E: calyx and ovary; F: ovary and stylodes.

Specimens examined: Van Beusekom and Phengklai 1348,
Chiang Mai (Doi Chiang Dao), alt. c 2050 m, 20 June 1968.
Ecology.-On limestone ridge in evergreen forest.