

1. *Hedychium* aff. *hookeri* Clarke ex Bak.-Fig.1

Rhizome small. Leafy stem c 60 cm tall. *Leaves*: blades linear or elliptic-linear, (13-) 15-20 x 2-3.5 cm, the apex long acuminate, the base cuneate, both surfaces glabrous, petiole 2-5 mm long; ligule small, c 1 mm long. *Inflorescence* from the lowest bract to the top c 5 cm long; peduncle short; bracts not imbricate, oblong, 1.4 - 1.6 x 0.4 cm, glabrous; bracteoles tubular, c 7 mm long.

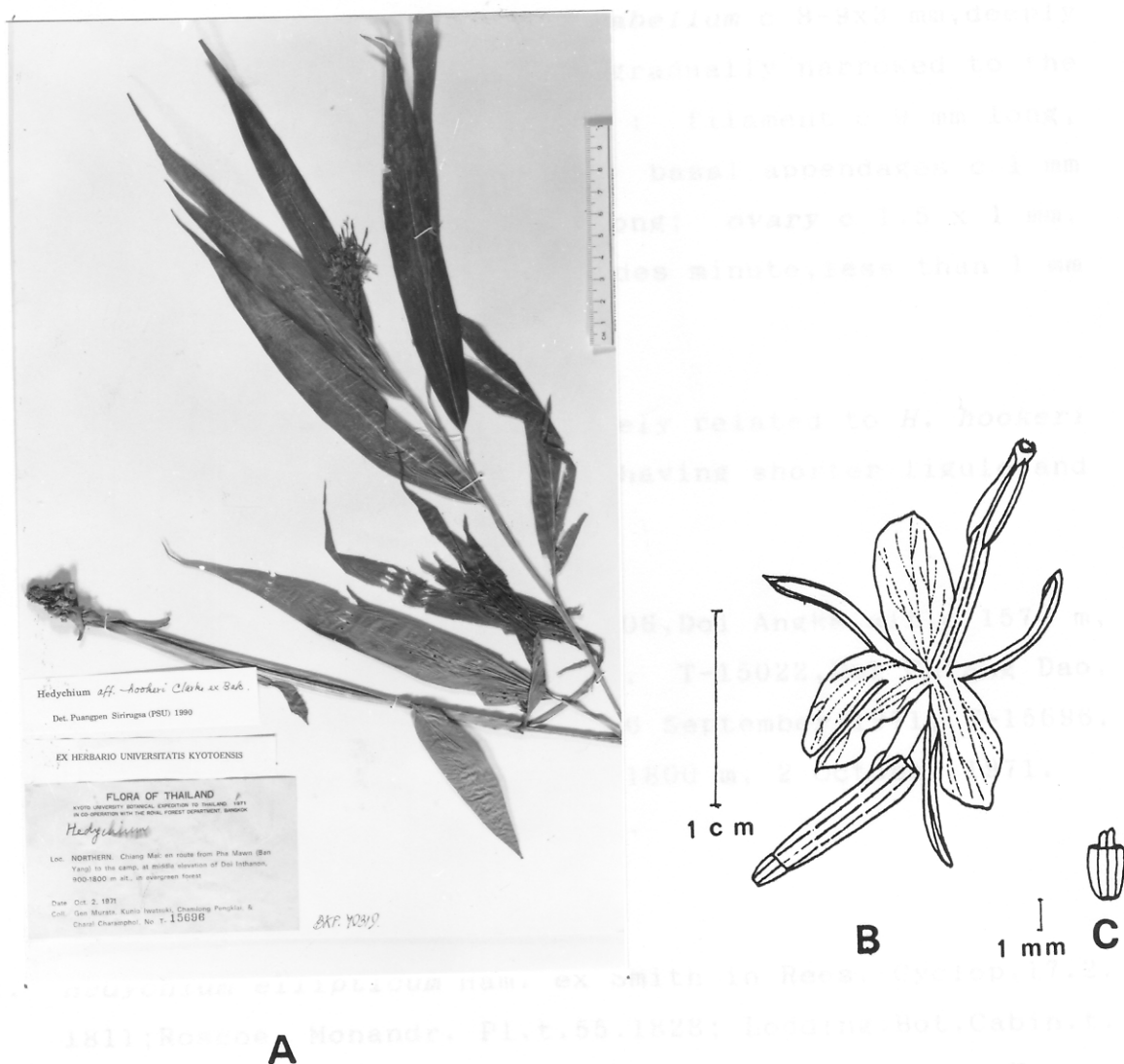


Fig. 1. *Hedychium* aff. *hookeri* - A: specimen, Murata et. al. T-15696; B: flower; C: ovary and stylodes.

*Flower* only one in each bract; *calyx* 7 - 9 mm long, glabrous, the apex shallowly 3-lobed; *corolla-tube* c 1.1 cm long, the lobes linear, c 9x2 mm; *staminodes* oblong, c 9x1.5-2.5 mm, the apex rounded; *labellum* c 8-9x3 mm, deeply divided, each lobe oblong and gradually narrowed to the apex, the apex rounded; *stamen* : filament c 9 mm long, anther elongate, c 4 mm long, basal appendages c 1 mm long, anther-crest c 0.5 mm long; *ovary* c 1.5 x 1 mm, glabrous, seeds several; stylodes minute, less than 1 mm long. *Fruit* not seen.

*Notes* .- This species is closely related to *H. hookeri* Clarke ex Bak. but differs by having shorter ligule and not clawed labellum.

*Specimens examined*.- Garrett 606, Doi Angka alt. c 1570 m, 18 November 1930; Murata et. al. T-15022, Doi Chiang Dao, Chiang Mai, alt. 1300-1900 m, 26 September 1971; T-15696, Pha Mawn, Chiang Mai, alt. 900-1800 m, 2 October 1971.

*Ecology* .- In evergreen forest.