

7. *Hedychium gomezianum* Wall. Cat.6543, in Kew Journ. 5:368 1853; Horan. Monogr.: 25.1862; Bak. in Hook.f.in Fl.Br. Ind.6:228.1892; Schum.in Pflanzenreich 4:55.1904.-Fig.7

Epiphytic, leafy stem 50 - 90 cm tall. *Leaves* sessile; blades oblong or elliptic-oblong, the apex acuminate, the base cuneate, both surfaces glabrous; ligule oblong 3-3.5 cm long, the apex broadly acute, sparsely hairy or almost glabrous. *Inflorescence* (5-)10-16(-20) cm long; peduncle 2-3 cm long; bracts not imbricate, oblong, c 1 x 0.3 cm, the apex rounded or shallowly bilobed, sparsely appressed hairy; bracteoles folded, ovate, c 6x4 mm, hairy, the apex bilobed. *Flowers* one in each bract; *calyx* c 2 cm long, glabrous, the apex 3-fid, divided along one side; *corolla-tube* c 3 cm long, the lobes linear, c 5.4 cm long the apex of the dorsal lobe hooded and long pointed, of the lateral lobes acute; *staminodes* clawed, oblanceolate, the claw c 1 cm long, the blade, c 2.7-3 x 0.5 cm, the apex acute; *labellum* clawed, the claw c 1.3 cm long, the blade c 1.7x0.9-1.1 cm, deeply divided, each lobe oblong, apex rounded; *stamen*: filament c 6.5 cm long, anther linear, c 1.1 cm long, basal appendages c 1.5 mm long; *ovary* c 3 x 1 mm, densely hairy; stylodes linear, c 2 mm long. *Fruit* globose, sparsely hairy or almost glabrous, 5-6 mm. indiam.

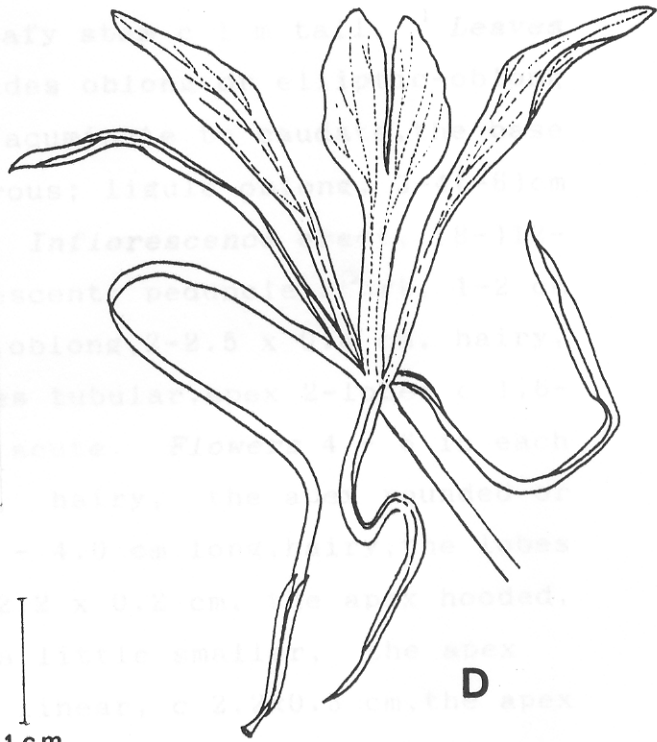
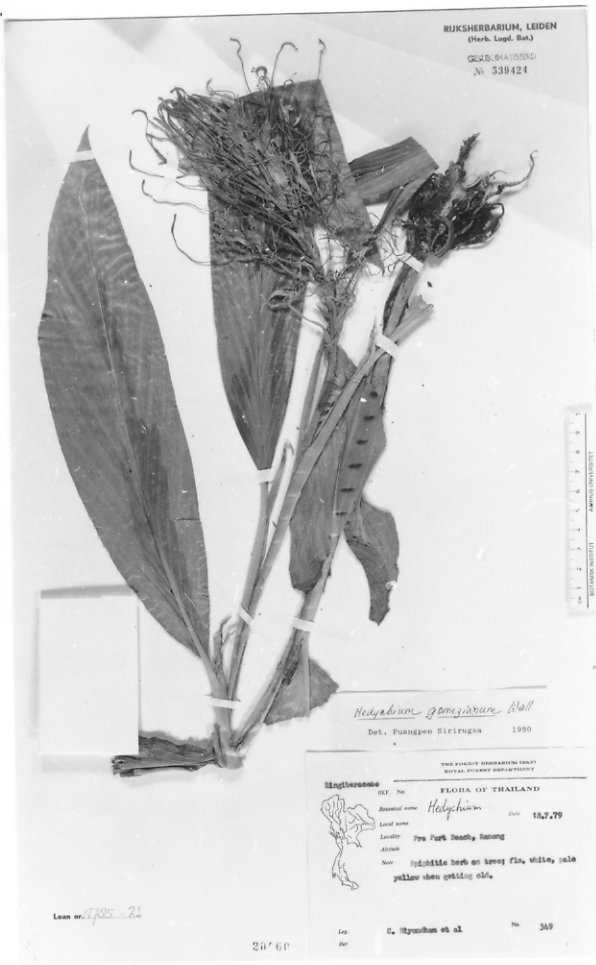


Fig. 7. *Hedychium gomezianum* - A: specimen, Niyomdham 349; B: bract; C: bracteole; D: flower; E: calyx and ovary.

Thailand.- EASTERN : Trat (Kau Kuap); PENINSULAR: Ranong, Surathani, Krabi.

Distribution.- Burma (Tavoy, type), Indochina, China (Yunnan), Malay Peninsula.

Ecology.- Epiphytic, in evergreen forest.