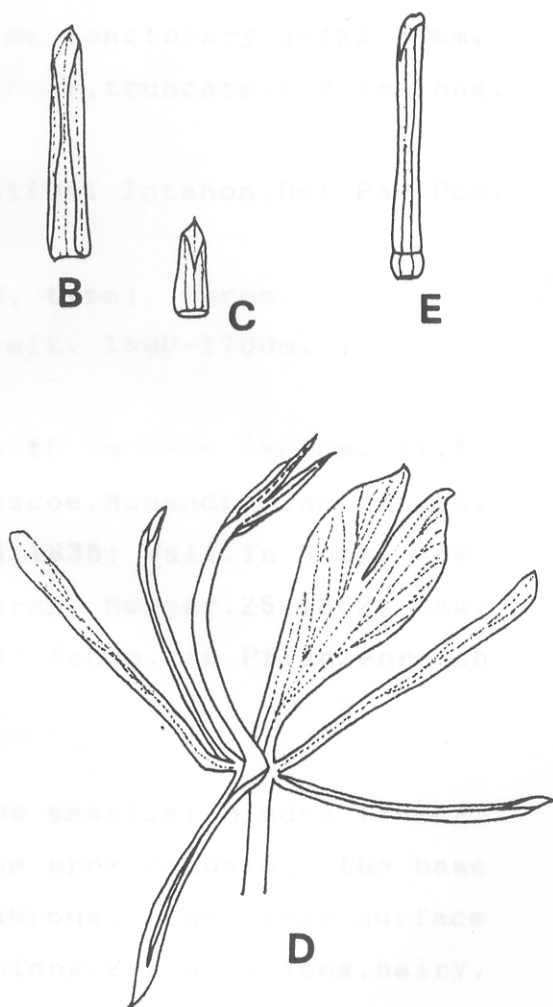
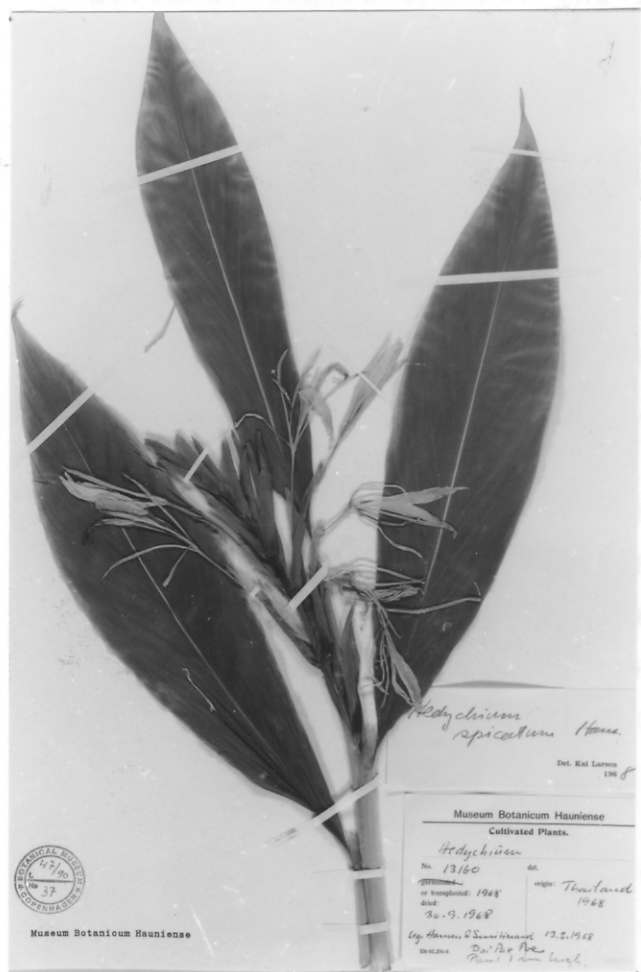


12. *Hedychium spicatum* Ham. ex Smith in Rees, Cyclop. 17:3. 1811; Roscoe, Monandr. Pl.t.48.1828; Wall.in Kew Journ. Bot.5: 328.1853; Horan. Prodr.:24.1862; Bak.in Hook.f. in Fl.Br.Ind. 6:227.1892; Schum. in Pflanzenreich 4.46: 50. 1904.- *H.roxburghii* Sieb ex Lindl. in Journ. Hort. Soc.7:281.1852, non Blume.- *H. sieboldii* Wall.in Hook. Kew Journ.5:371.1853.- Fig.12

Leafy stem c 1 m tall. *Leaves* sessile; blades elliptic-oblong, 26-30 x 6-9 cm, the apex acuminate to caudate, the base acute, upper surface glabrous, lower surface sparsely hairy, glabrescent, sometimes glabrous; ligule oblong, 1-1.5 cm long, the apex rounded, sparsely hairy. *Inflorescence*: spike 10 - 15 cm long, peduncle 2-6 cm long, bracts folded, oblong, 3-4x1 cm, glabrous except the apex long hairy, the apex broadly acute; bracteoles tubular, 1.2-1.5 cm, glabrous except the apex long hairy, the apex acute. *Flowers* one in each bract; *calyx* 3-3.7 cm long, glabrous, the apex 3-lobed; *corolla-tube* c 8 cm long, the lobes linear, c 3 x 0.2 cm, the lateral lobes a little shorter than the dorsal lobe; *staminodes*



1 cm

Fig.12. *Hedychium spicatum* - A: specimen, Hansen 13160; B: bract; C: bracteole; D: flower; E: calyx and ovary.

white with orange base, linear, c 2.7x0.3 cm; *labellum* same colour as the staminodes, clawed, the claw 1-1.5 cm long, the blade obovate or elliptic, c 3 x 1.5 cm, deeply divided; *stamen* orange: the filament c 2.7 cm long, the anther linear, 1-1.5 cm, often with filiform appendage at the apex, basal appendages c 1 mm long; *ovary* 3-4x2.3 mm, densely long hairy, *stylodes* linear, truncate, c 2 mm long.

Thailand.- NORTHERN: Chiang Mai (Doi Intanon, Doi Pae Poe, Doi Pa Moum).

Distribution.- India (Himalaya, type), Burma.

Ecology.- Open grassy forest. alt. 1500-1700m.