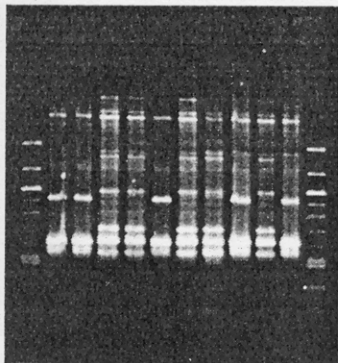


FIG. 1. AP-PCR profiles of 10 isolates of *V. parahaemolyticus* from patient group 16, lanes 1 and 12 (molecular weight markers: 100 bp ladder, New England Biolabs, Ipswich, MA); lanes 2, 3, and 6, O3:K6, GS-PCR-positive isolates; lanes 4, 5, 7, 8, and 10, O4:K8, GS-PCR-negative isolates; lanes 9 and 11, O4:K8, GS-PCR-positive isolates. A1 and A2, results obtained with primer 2 and primer 4 respectively.

A1

1 2 3 4 5 6 7 8 9 10 11 12



A2

1 2 3 4 5 6 7 8 9 10 11 12

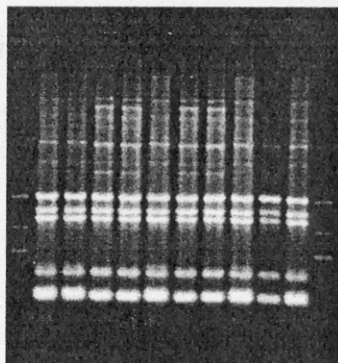


FIG. 2. PFGE profiles of 10 isolates of *V. parahaemolyticus* from a patient group 16. Lanes 1 and 12 (molecular weight markers: Lambda ladder, Bio-Rad Laboratories); lanes 2, 3, and 6, O3:K6, GS-PCR-positive isolates; lanes 4, 5, 7, 8, and 10, O4:K8, GS-PCR-negative isolates; lanes 9 and 11, O4:K8, GS-PCR-positive isolates.

TABLE I. Characteristics of P₁

1 2 3 4 5 6 7 8 9 10 11 12

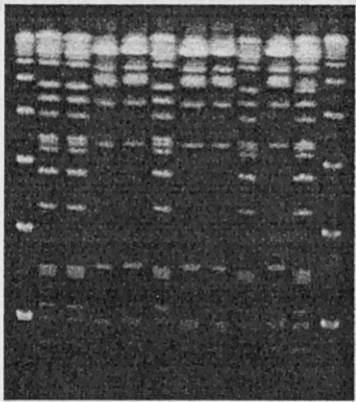


TABLE 1. Characteristics of *V. parahaemolyticus* isolates from 63 patients in Hat Yai hospital during the years 2003–2004.

Patient group	No. of patient specimens	No. of isolates	Presence of gene ^a		GS-PCR result ^a	ORF8-result ^a	O:K serotypes ^b	AP-PCR pattern ^c
			<i>tdh</i>	<i>trh</i>				
1	16	160	+	–	+	+	3:6	Identical
2	6	60	+	–	+	–	3:6	Identical
3	8	80	+	–	+	–	1:25	Identical
4	3	30	+	–	+	+	1:UT	Identical
5	3	30	–	–	–	–	11:UT	Identical
6	3	30	+	–	–	–	4:8	Identical
7	2	20	+	–	+	+	4:68	Identical
8	1	10	+	–	–	–	8:21	Identical
9	2	10 (9 ^d , 1)	+	–	+	+	3:6	Identical
		10 (1 ^d , 9)	+	–	+	–	3:6	
10	1	9	+	+	–	–	4:67	Identical
		1	–	+	–	–	4:67	
11	1	9	+	–	+	+	1:25	Identical
		1	+	–	+	+	1:UT	
12	1	9	+	+	–	–	3:56	Identical
		1	+	+	–	–	R:56	
13	2	6 (5, 1 ^e)	+	–	–	–	4:8	Non- identical
		13 (5, 8)	+	–	–	–	1:56	
14	1	5	+	–	–	–	3:5	Non-identical
		5	+	–	–	–	4:8	

15	1	6	+	+	-	-	11:UT	Non-identical
		3	+	+	-	-	3:5 ^f	
		1	+	+	-	-	R:5 ^f	
16	1	3	+	-	+	-	3:6 ^f	Non-identical
		2	+	-	+	-	4:8 ^f	
		5	+	-	-	-	4:8	
17	1	1	-	+	-	-	1:UT	Non-identical
		1	-	+	-	-	3:UT	
		8	+	+	-	-	5:UT	
18	1	9	+	-	+	-	1:25	Non-identical
		1	-	-	-	-	4:67	
19	3	13 (9, 2, 2)	+	-	+	+	3:6	Non-identical
		17 (1, 8, 8)	+	-	-	-	4:8	
20	2	12 (8, 4)	+	-	+	+	3:6	Non-identical
		8 (2, 6)	+	-	-	-	3:5	
21	1	3	+	-	+	+	3:6	Non-identical
		1	+	-	-	-	3:7	
		6	+	-	-	-	4:8	
22	1	5	+	-	+	-	1:25 ^f	Non-identical
		1	+	-	+	+	3:6 ^f	
		2	+	-	-	-	3:5 ^g	
		2	+	-	-	-	3:UT ^g	
23	1	3	+	-	+	+	3:6	Non-identical
		7	+	+	-	-	11:UT	

24	1	9	+	-	+	+	4:68	Non-identical
		1	-	-	-	-	11:UT	

^a +, present; -, absent.

^b UT, untypeable; R, rough.

^c Identical, all 10 isolates showed an identical AP-PCR pattern. Non-identical, the AP-PCR patterns were not identical between or among the subgroups in the patient group, unless otherwise specified.

^d Numbers in parentheses correspond to the abundance of the indicated type in each patient specimen where different specimens are separated by commas. The sum of the vertical numbers indicates the total numbers of isolates of *V. parahaemolyticus* in each individual patient.

^e Only nine isolates were obtained in this specimen.

^{f,g} Identical AP-PCR patterns were observed within a patient group.

TABLE 2. *V. parahaemolyticus* isolates used to examine the serotype and toxin gene profile stability *in vivo* and *in vitro* and the result of *in vivo* study using rabbits

Isolates	Sources	Characteristics			Recovery of the administered isolate from rabbit stool ^b
		Serotypes	Virulence genes	GS-PCR	
PSU1681		O3:K6	<i>tdh</i> ⁺ <i>trh</i> ⁻	+	-
PSU1690	Patients group 16	O4:K8	<i>tdh</i> ⁺ <i>trh</i> ⁻	+	-
PSU1683		O4:K8	<i>tdh</i> ⁺ <i>trh</i> ⁻	-	+(6)
PSU1958		O3:K6	<i>tdh</i> ⁺ <i>trh</i> ⁺	-	-
PSU2056	Hat Yai ^a hospital	O11:KUT	<i>tdh</i> ⁺ <i>trh</i> ⁺	-	+(12*)
PSU2490		O4:K55	<i>tdh</i> ⁻ <i>trh</i> ⁺	-	+(6, 18, 24)

||

^a Clinical specimen isolated in 2005

^b +, recovered. -, not recovered. When the isolate was recovered, the time (in hour) of stool specimen collection is indicated in the parenthesis. Asterisk (*) indicates serotype change was observed for some of the isolates from the indicated fecal specimen.