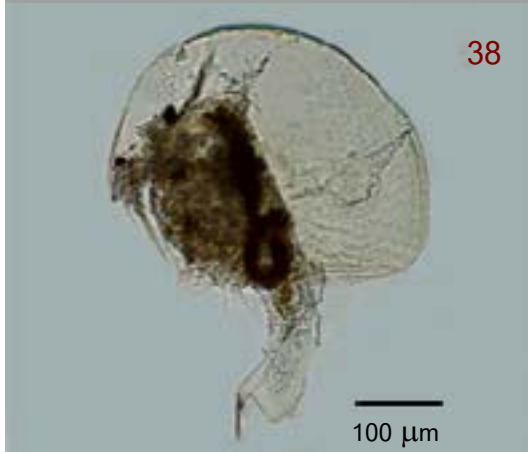
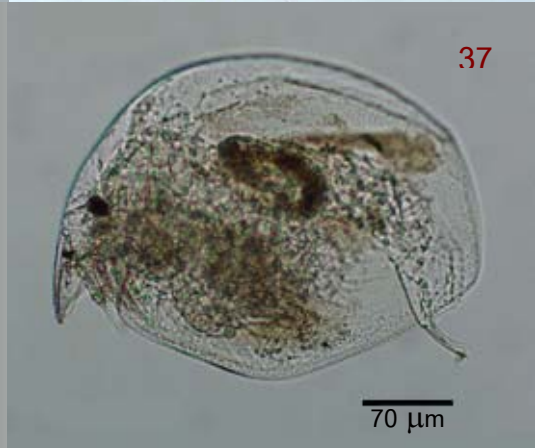
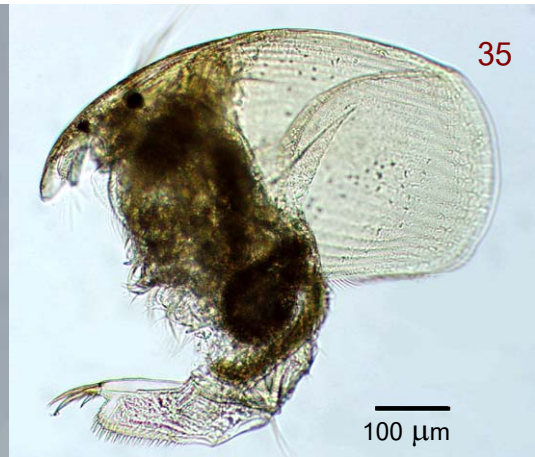


ภาคผนวก ก

## ภาคผนวก ก

ภาพถ่ายของคลาโดเซอราที่พบในการศึกษาครั้งนี้จาก  
กล้องจุลทรรศน์แบบตาประกอบ (compound microscope)



รูปที่ 34 *Acroperus harpae* (Baird, 1834)

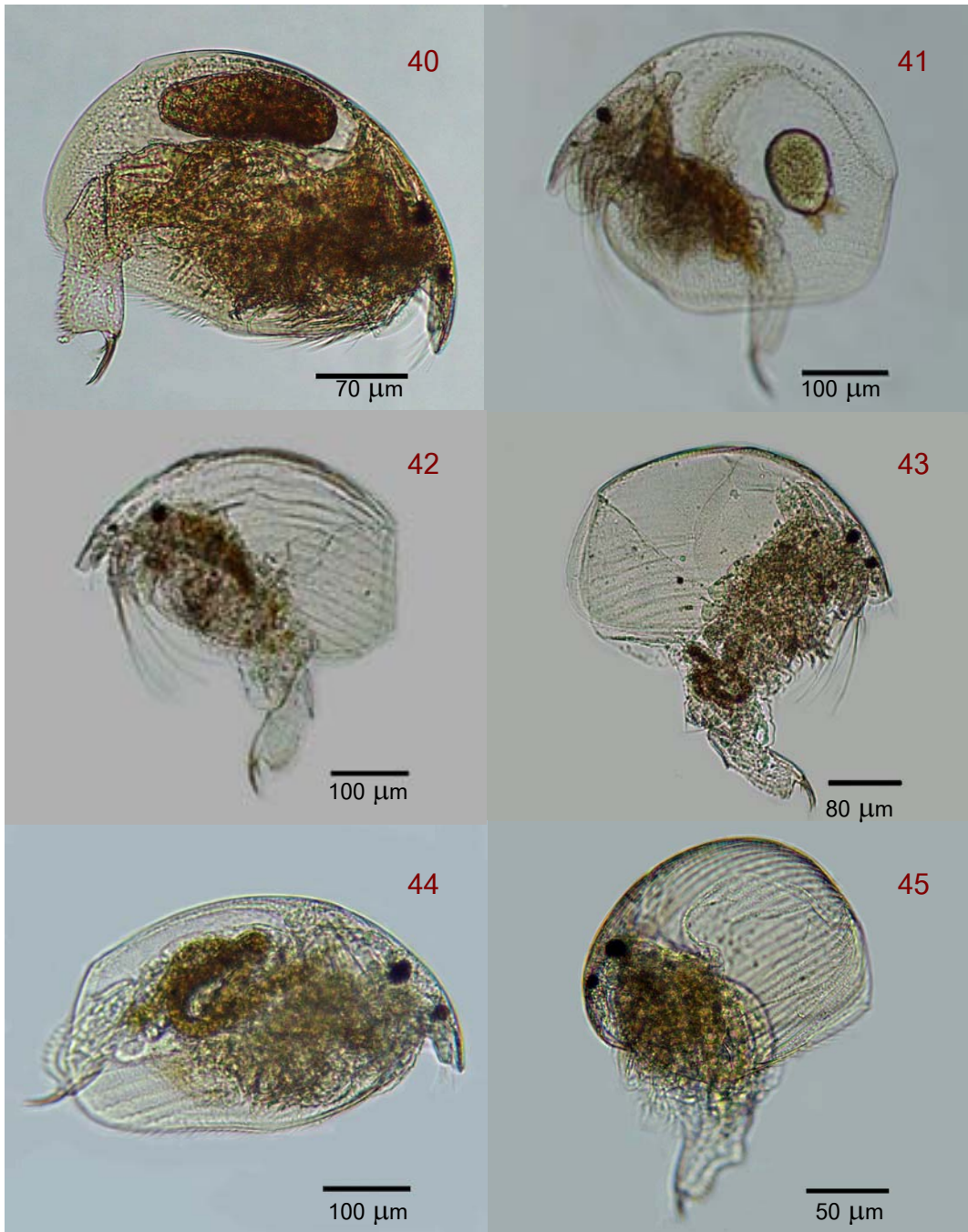
รูปที่ 36 *Alona costata* King, 1853

รูปที่ 38 *Alona eximia* Kiser, 1948

รูปที่ 35 *Alona affinis* (Leydig, 1860)

รูปที่ 37 *Alona diaphana* Kiser, 1853

รูปที่ 39 *Alona guttata* Sars, 1862



រូបទី 40 *Alona intermedia* Sars, 1862

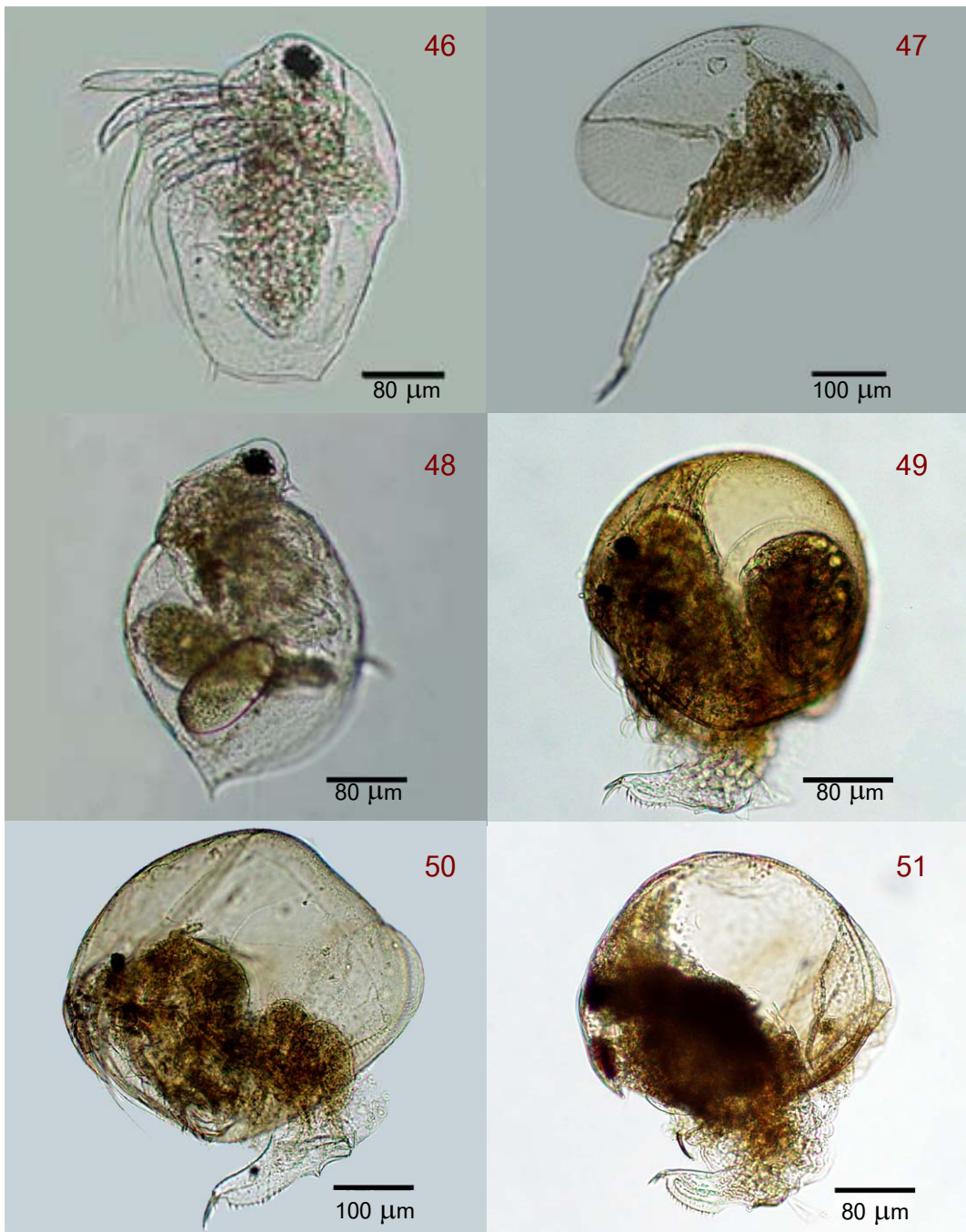
រូបទី 41 *Alona macronyx* Daday, 1898

រូបទី 42 *Alona monacantha* Sars, 1901

រូបទី 43 *Alona pulchella* King, 1853

រូបទី 44 *Alona rectangula* Sars, 1862

រូបទី 45 *Alonella nana* (Baird, 1850)



រូបភាព 46 *Bosminopsis deitersi* Richard, 1895

រូបភាព 47 *Camptocercus australis* (Sars, 1895)

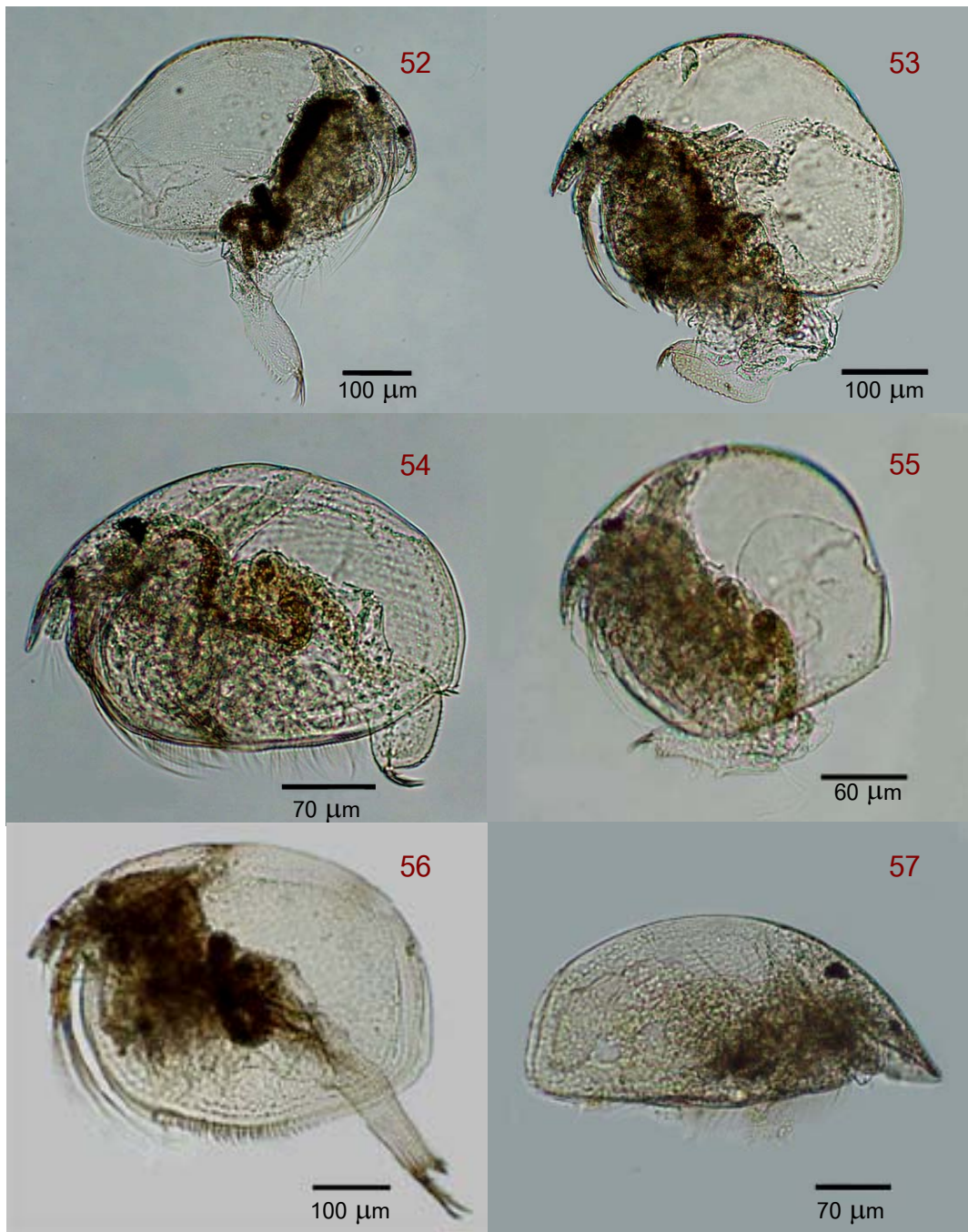
រូបភាព 48 *Ceriodaphnia cornuta* Sars, 1885

រូបភាព 49 *Chydorus parvus* Daday, 1898

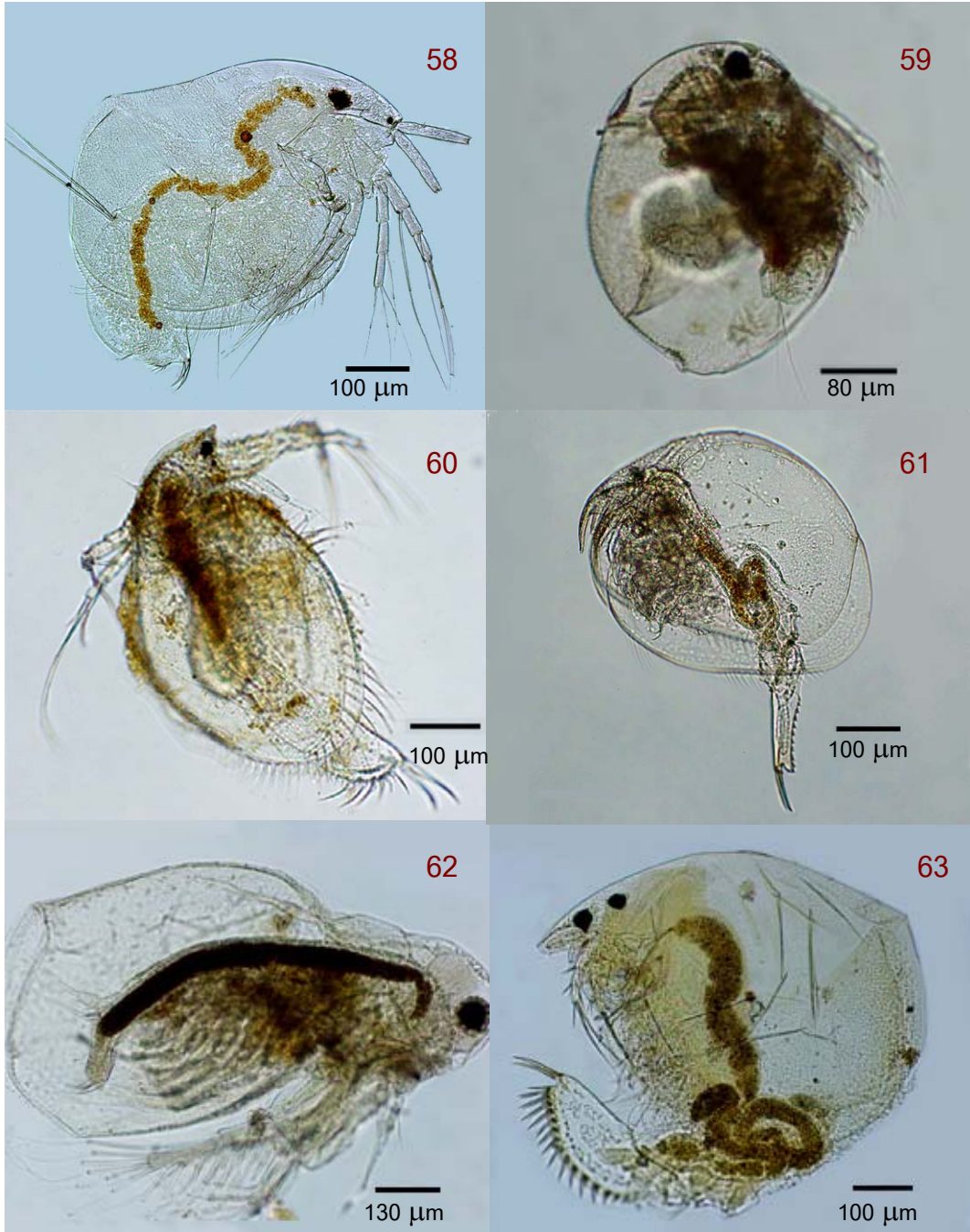
រូបភាព 50 *Chydorus ventricosus* Daday, 1898

រូបភាព 51 *Dadaya macrops* (Daday, 1898)





រូបភាព 52 *Disparalona hamata* (Birge, 1879) រូបភាព 53 *Dunhevedia crassa* King, 1853  
 រូបភាព 54 *Dunhevedia serrata* Daday, 1898 រូបភាព 55 *Ephemeroporus barroisi* (Richard, 1894)  
 រូបភាព 56 *Euryalona oreintalis* (Daday, 1898) រូបភាព 57 *Graptoleberis testudinaria* (Fischer, 1851)



រូបភាព 58 *Grimaldina brazzai* Richard, 1892

រូបភាព 59 *Guernella raphaelis* Richard, 1892

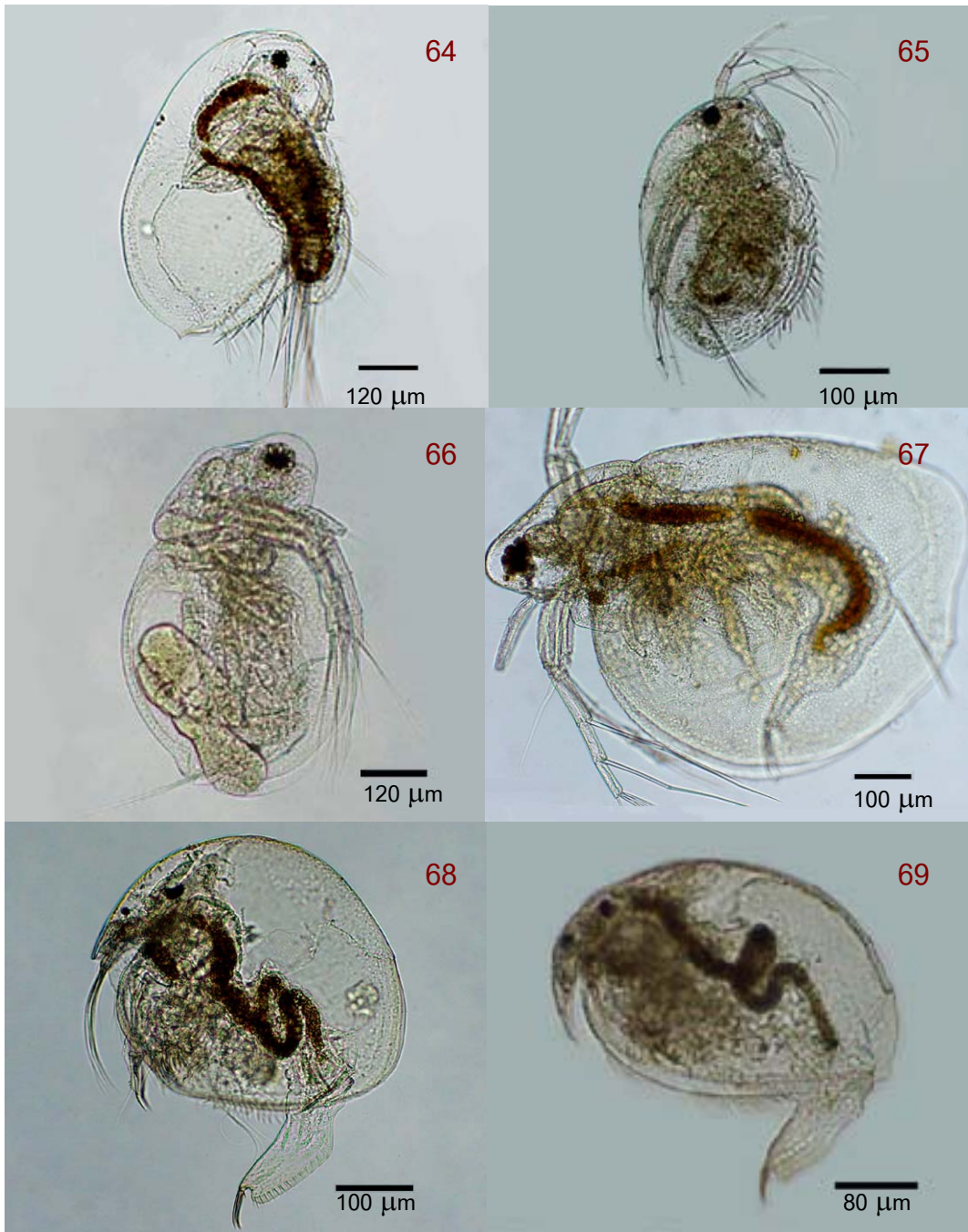
រូបភាព 60 *Ilyocryptus spinifer* Herrick, 1882

រូបភាព 61 *Kurzia longirostris* (Daday, 1898)

រូបភាព 62 *Latonopsis australis* Sars, 1888

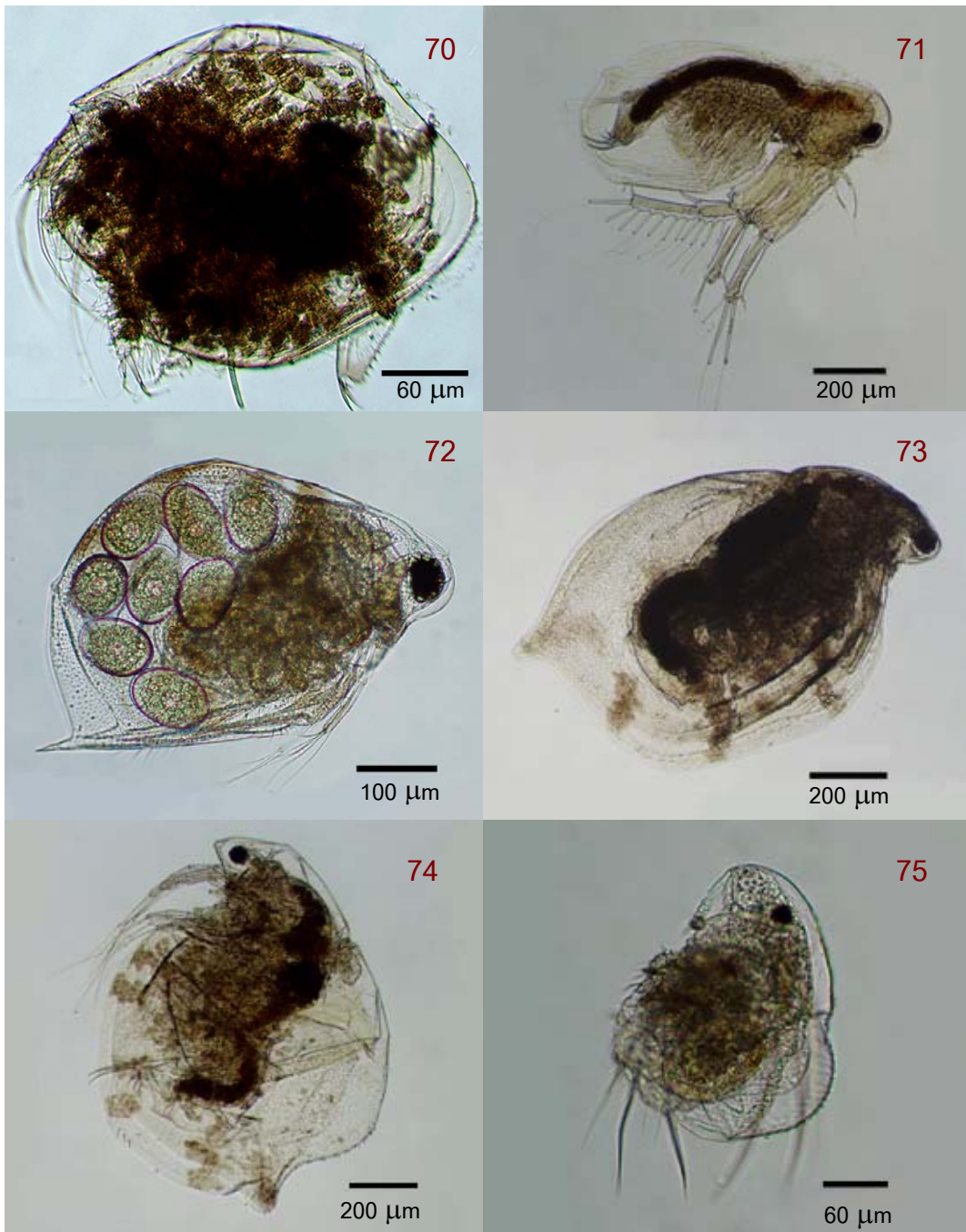
រូបភាព 63 *Leydigia australis* Sars, 1885





រូបភាព 64 *Macrothrix flabelligera* Smirnov, 1992    រូបភាព 65 *Macrothrix laticornis* (Fischer, 1851)  
 រូបភាព 66 *Moina micrura* Kurz, 1874    រូបភាព 67 *Moinodaphnia macleayi* (King, 1853)  
 រូបភាព 68 *Notoalona globulosa* (Daday, 1898)    រូបភាព 69 *Picripleuroxus laevis* (Sars, 1862)





រូបទី 70 *Picripleuroxus quasidenticulatus* Smirnov, 1996    រូបទី 71 *Pseudosida bidentata* Herrick, 1884

រូបទី 72 *Scapholeberis kingi* Sars, 1903

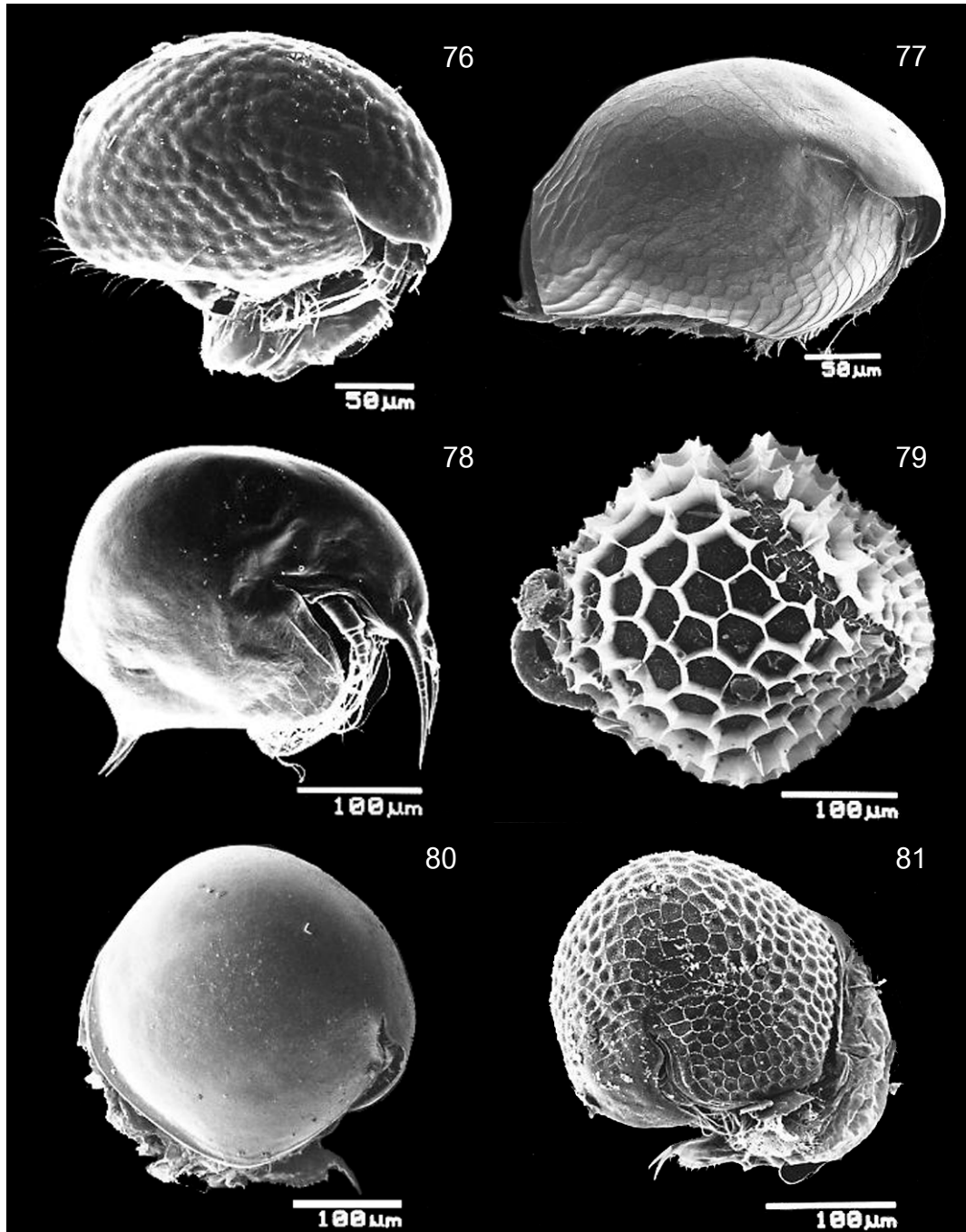
រូបទី 73 *Simocephalus mesorostris*  
(Orlova-Bienkowskaja, 1995)

រូបទី 74 *Simocephalus serrulatus* (Koch, 1841)

រូបទី 75 *Streblocerus pygmaeus* Sars, 1901

**ภาคผนวก ข**

**ภาพถ่ายของคลาโดเซอราที่พบในการศึกษารังนี้  
จากกล้องจุลทรรศน์อิเล็กตรอนแบบส่องกราด  
(scanning electron microscope : SEM)**



រូបភាព 76 *Alona verrucosa* group

រូបភាព 77 *Alonella excisa* Fisher, 1854

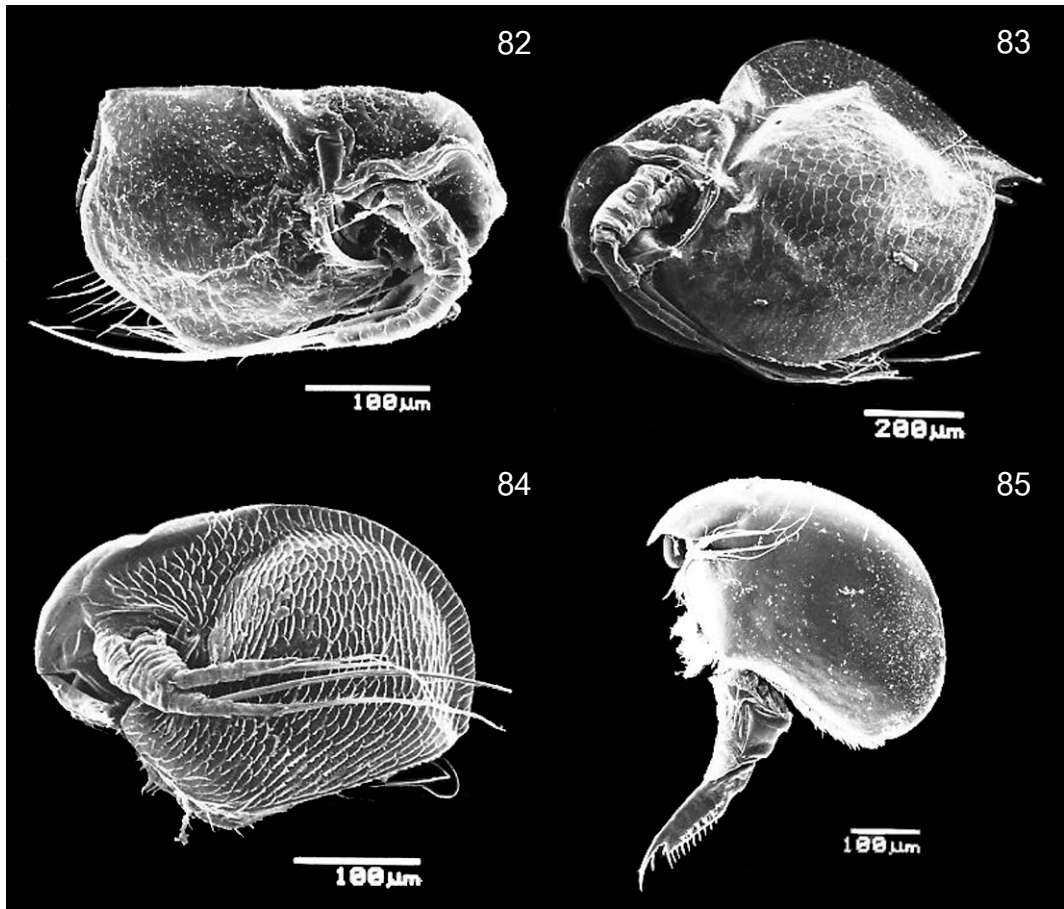
រូបភាព 78 *Bosmina meridionalis* Sars, 1904

រូបភាព 79 *Chydorus obscurirostris tasekberae*  
Frey, 1987

រូបភាព 80 *Chydorus pubescens* Sars, 1901

រូបភាព 81 *Chydorus reticulatus* Daday, 1898





រូបភាព 82 *Macrothrix odiosa* Gurney, 1916

រូបភាព 83 *Macrothrix sioli* (Smirnov, 1982)

រូបភាព 84 *Macrothrix spinosa* King, 1852

រូបភាព 85 *Oxyurella singalensis* (Daday, 1898)