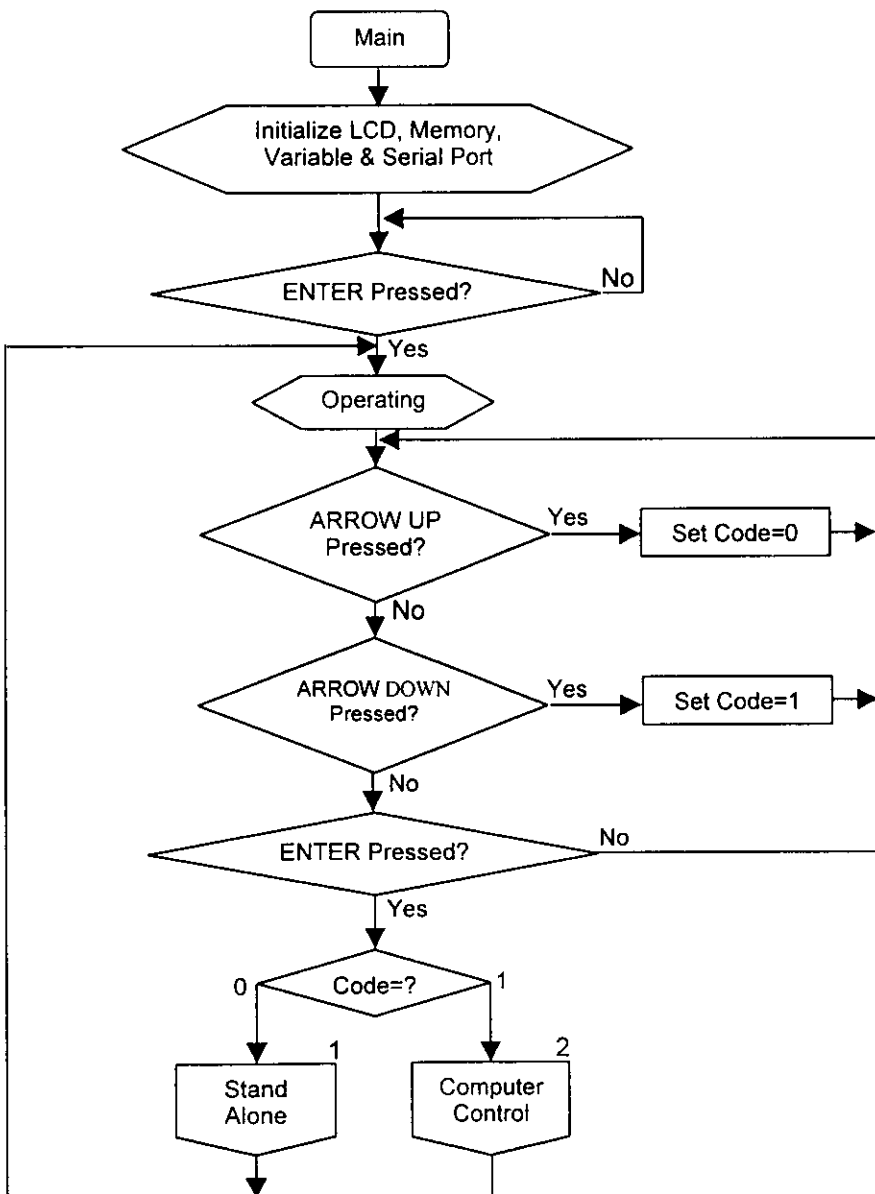


## ภาคผนวก จ

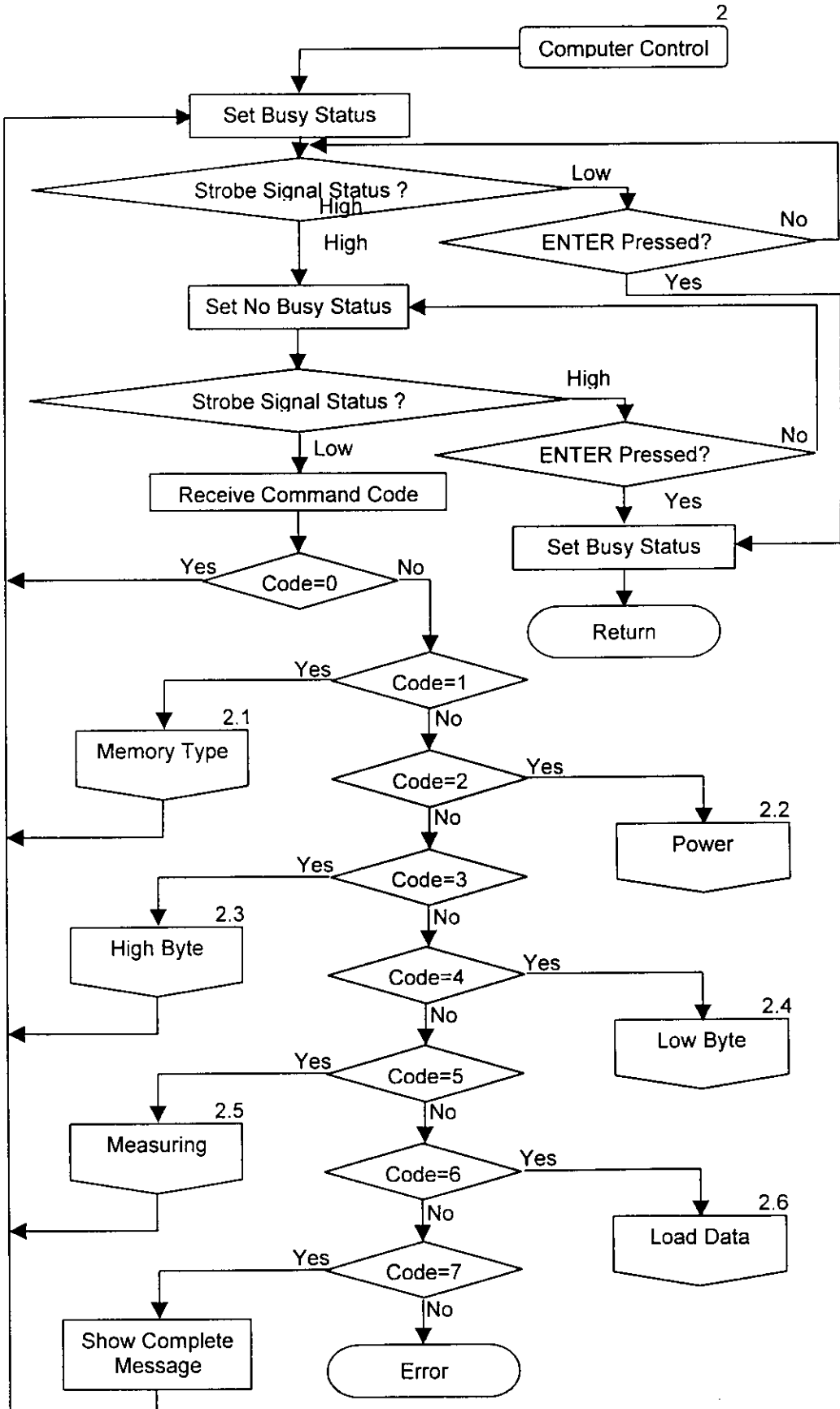
### แผนผังลำดับการทำงานของไมโครคอนโทรลเลอร์

แผนผังลำดับงานภาษาแอสเซมบลีที่ใช้ควบคุมการทำงานของไมโครคอนโทรลเลอร์ในเครื่องคอนโทรลยูนิตแสดงใน Flowchart 1 ถึง Flowchart 36 ส่วนของเครื่องโคลเอนท์ทั้ง 38 เครื่องแสดงใน Flowchart 37

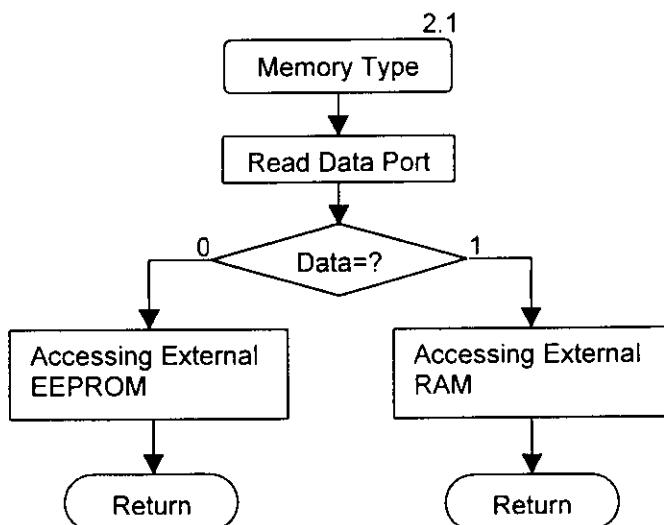
Flowchart 1: Main



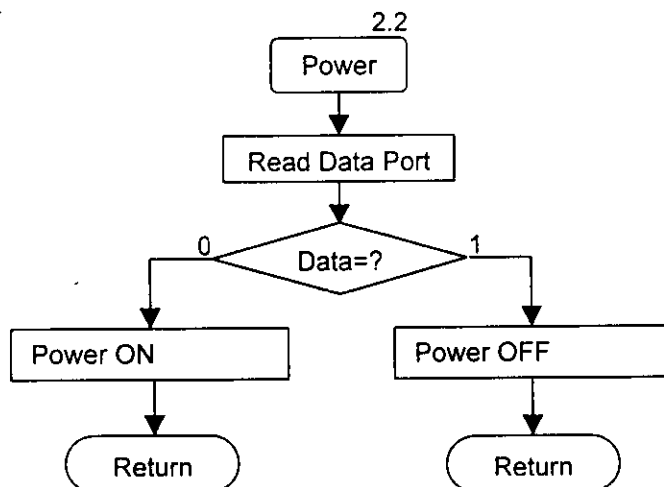
Flowchart 2: Computer Control Mode



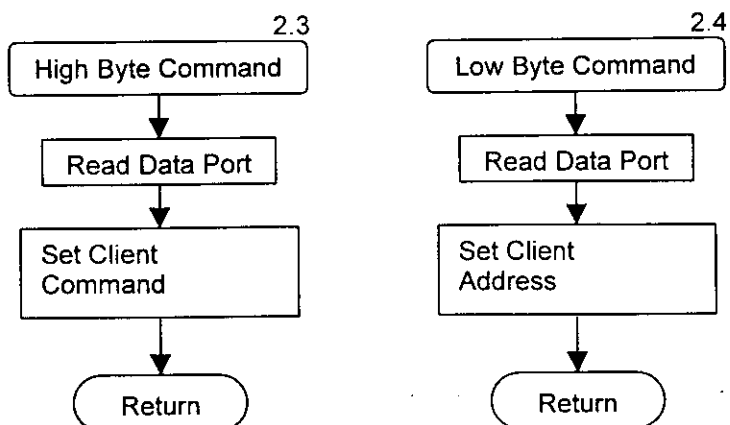
Flowchart 3: Memory Type



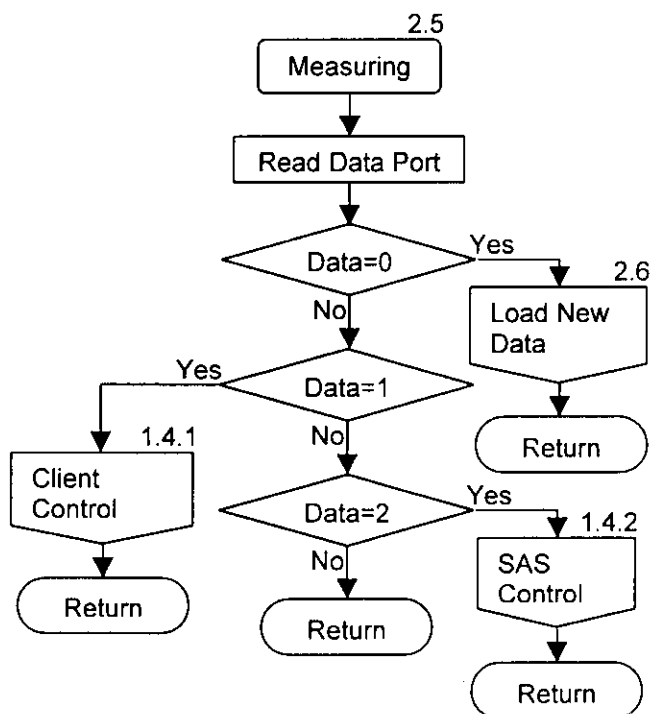
Flowchart 4: Power



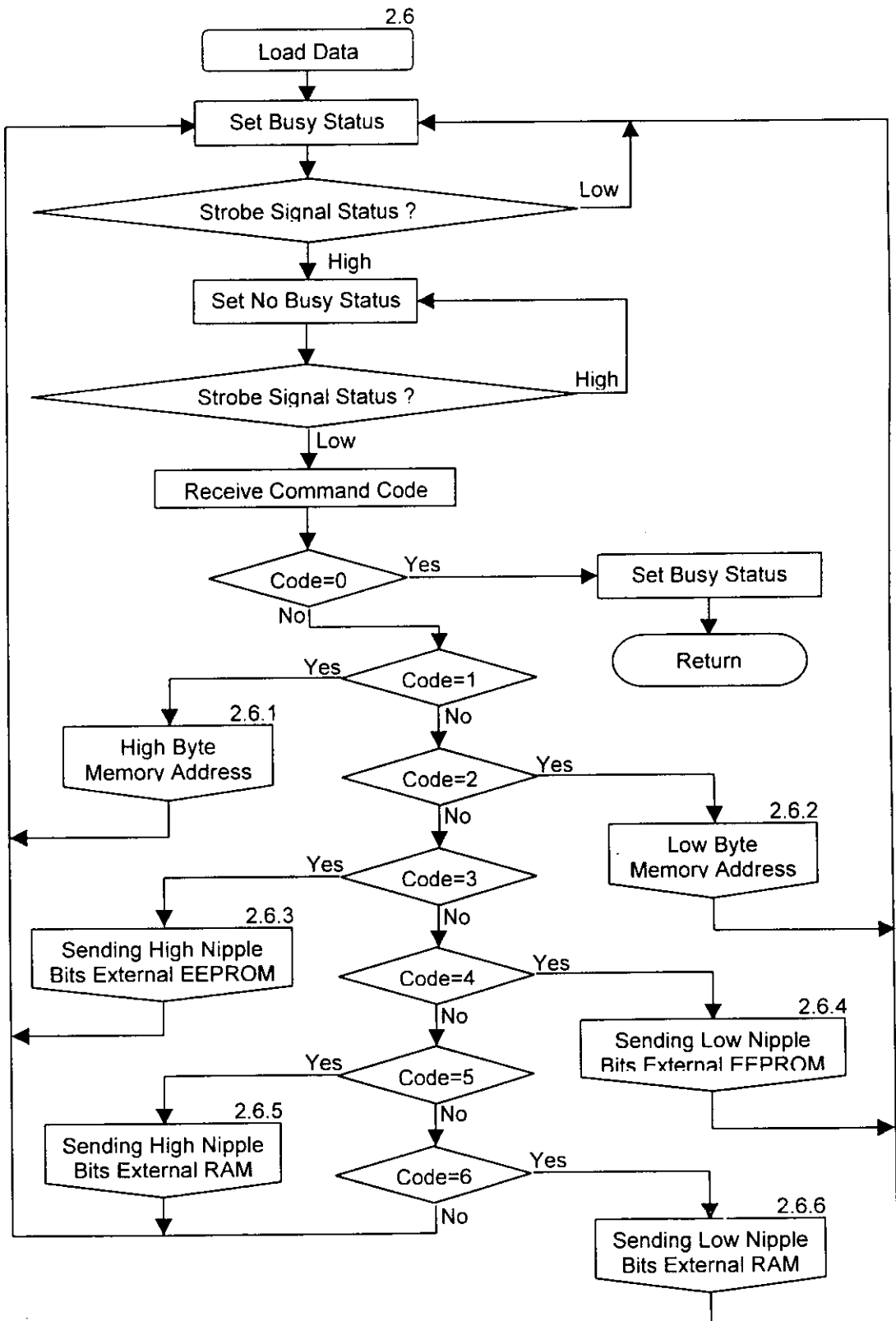
Flowchart 5,6: High Byte and Low Byte Command



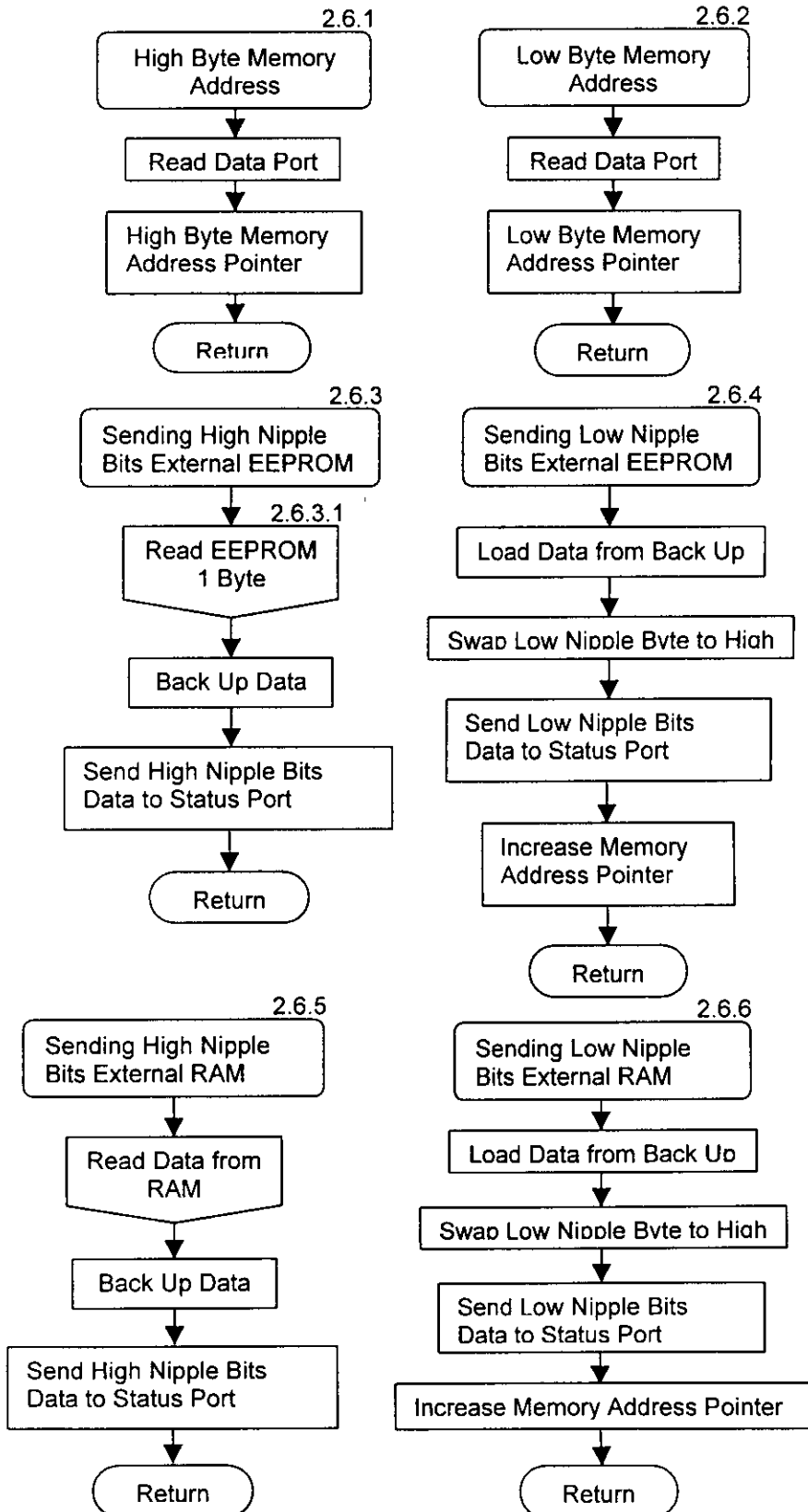
Flowchart 7: Measuring Function



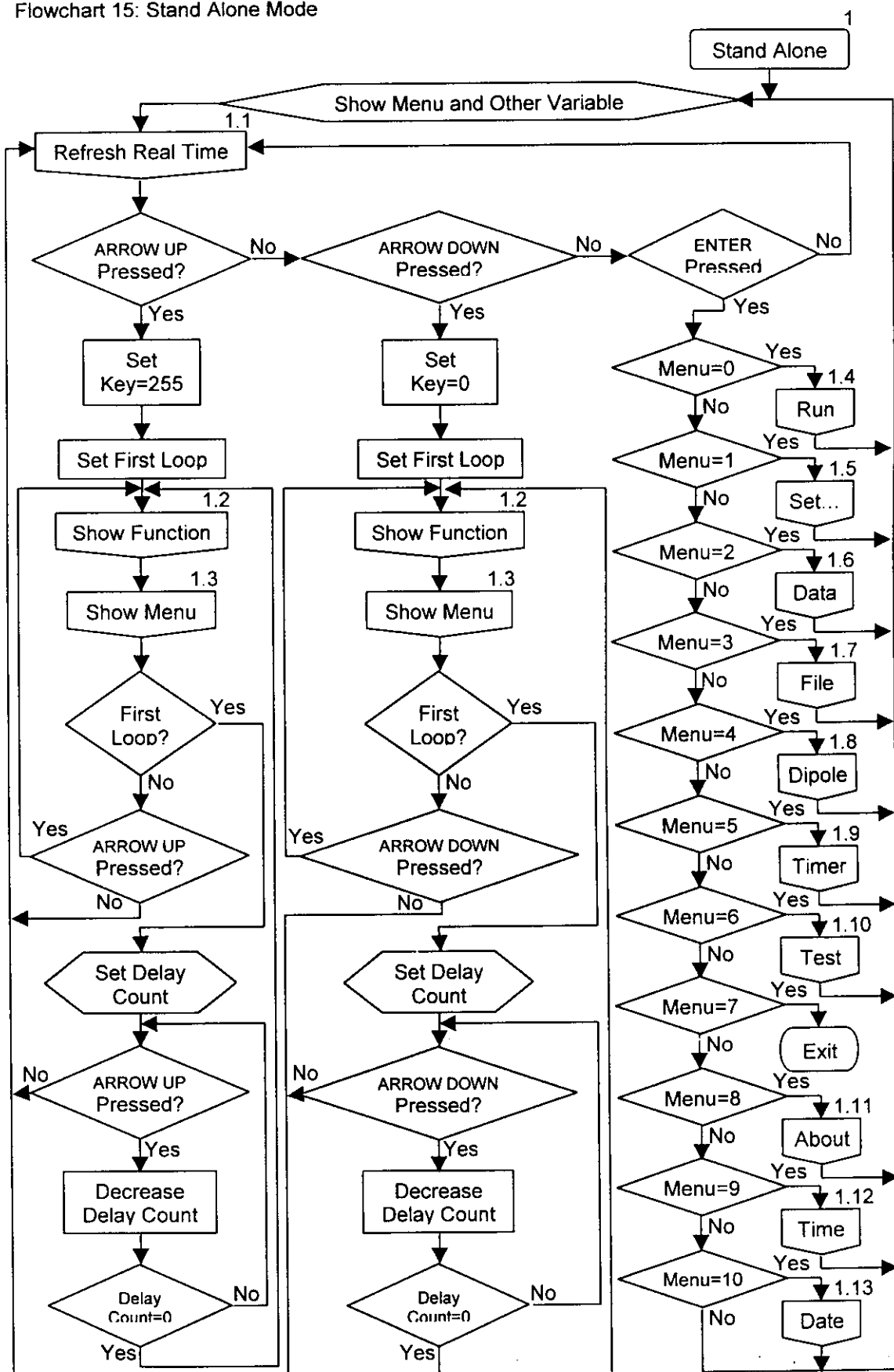
Flowchart 8: Load Data



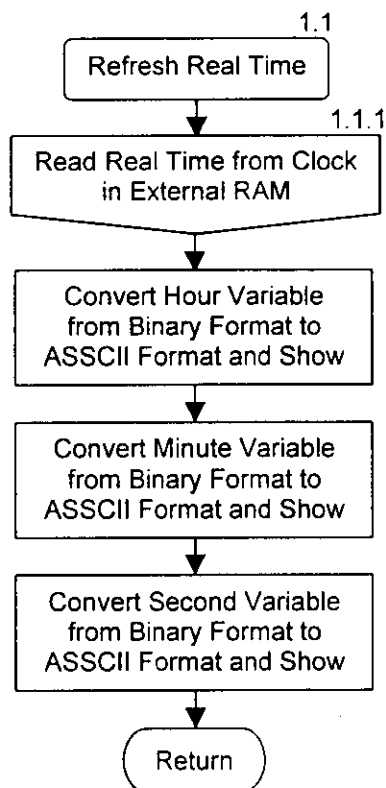
Flowchart 9, 10, 11, 12, 13 and 14: High Byte and Low Byte Memory Address, Sending High and Low Nipple Bits External EEPROM and RAM



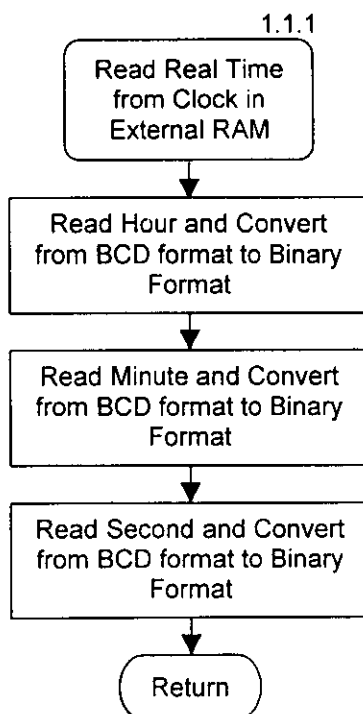
Flowchart 15: Stand Alone Mode



Flowchart 16: Refresh Real Time

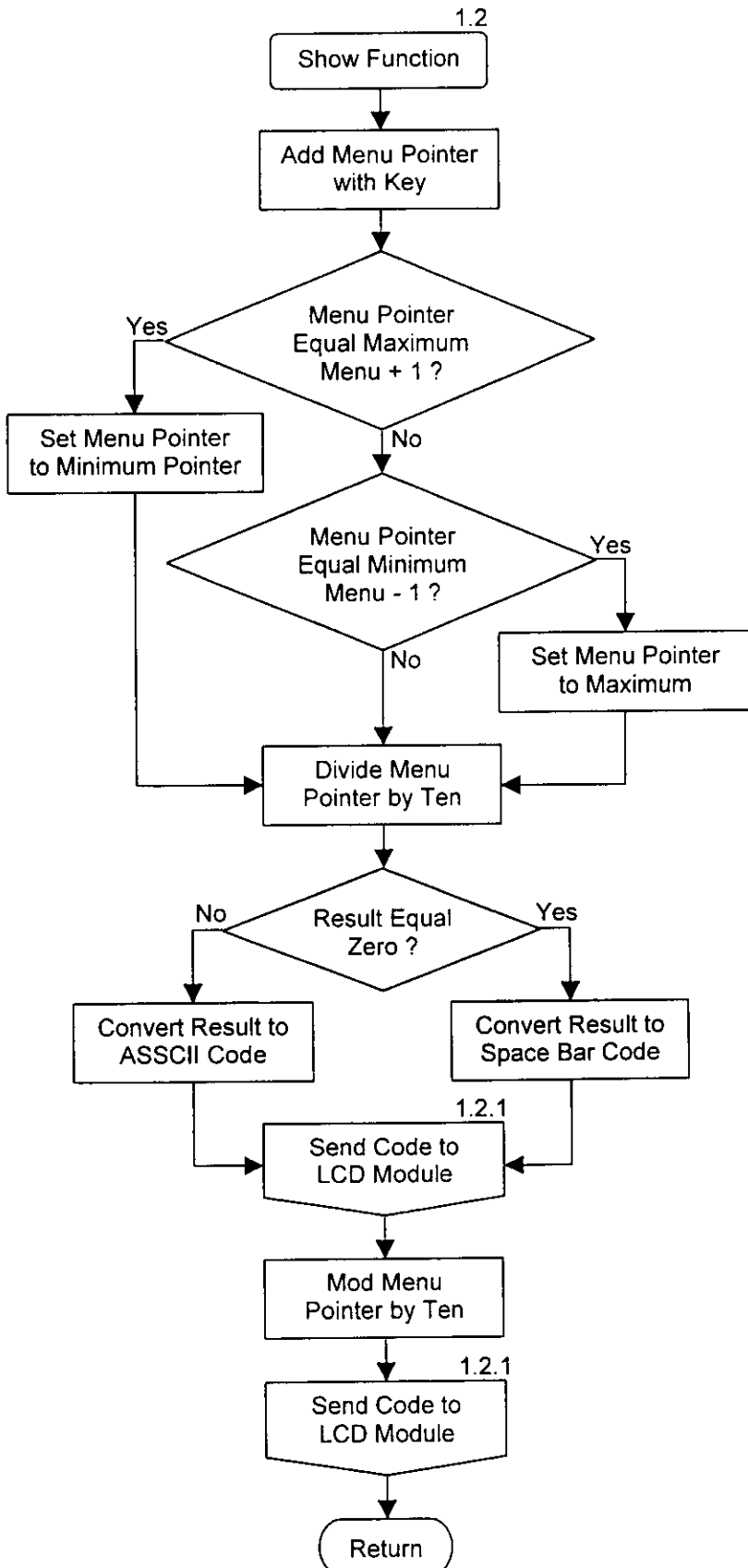


Flowchart 17: Read Real Time from Clock in External RAM

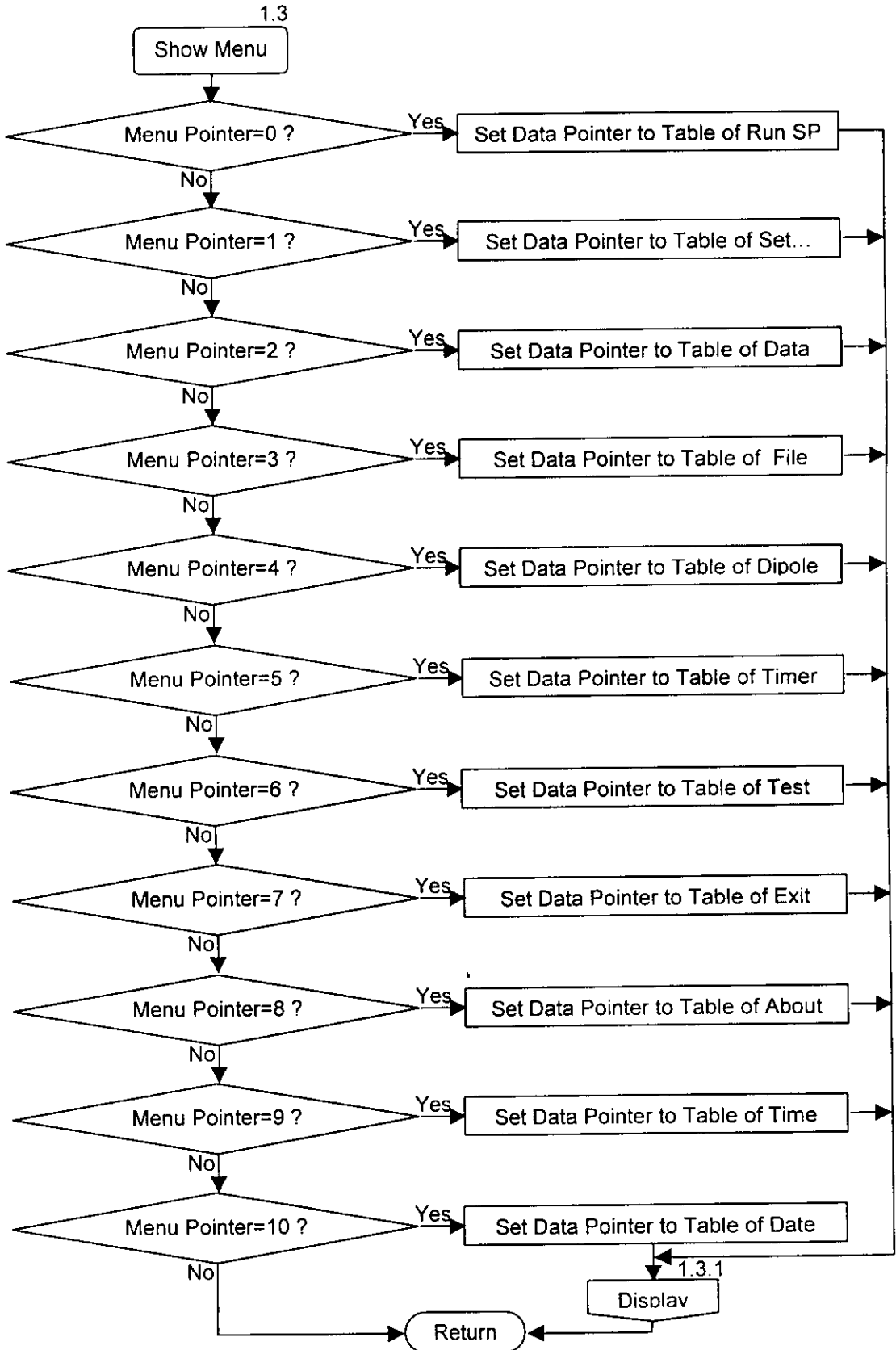




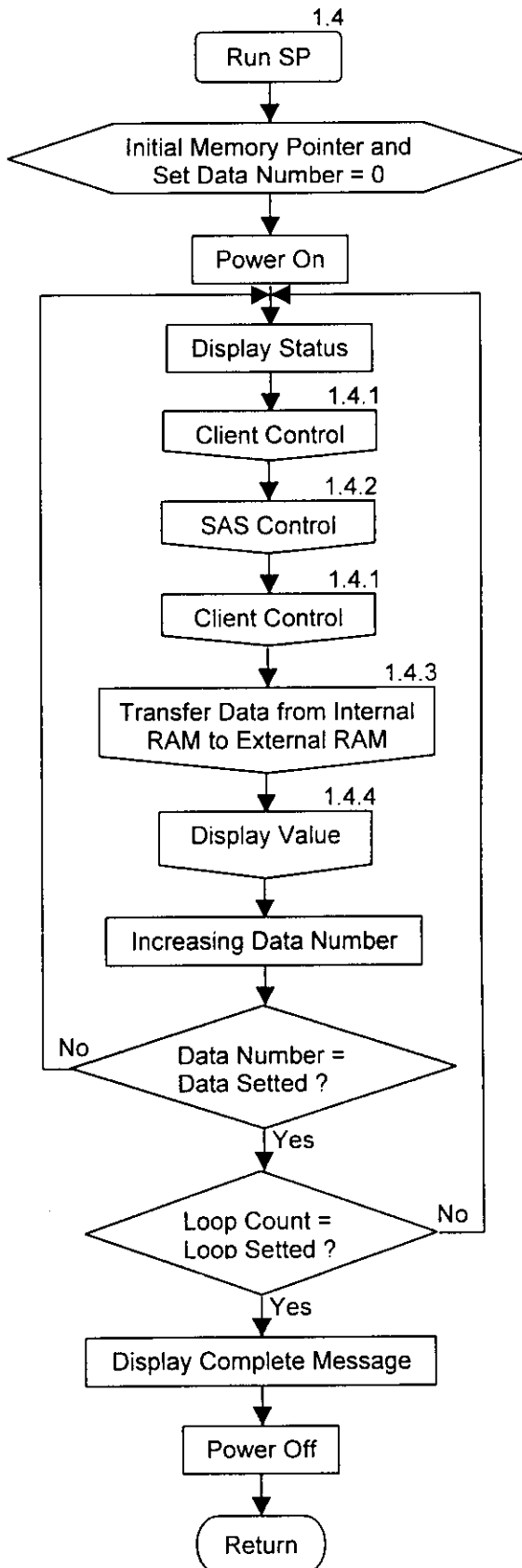
Flowchart 18: Show Function



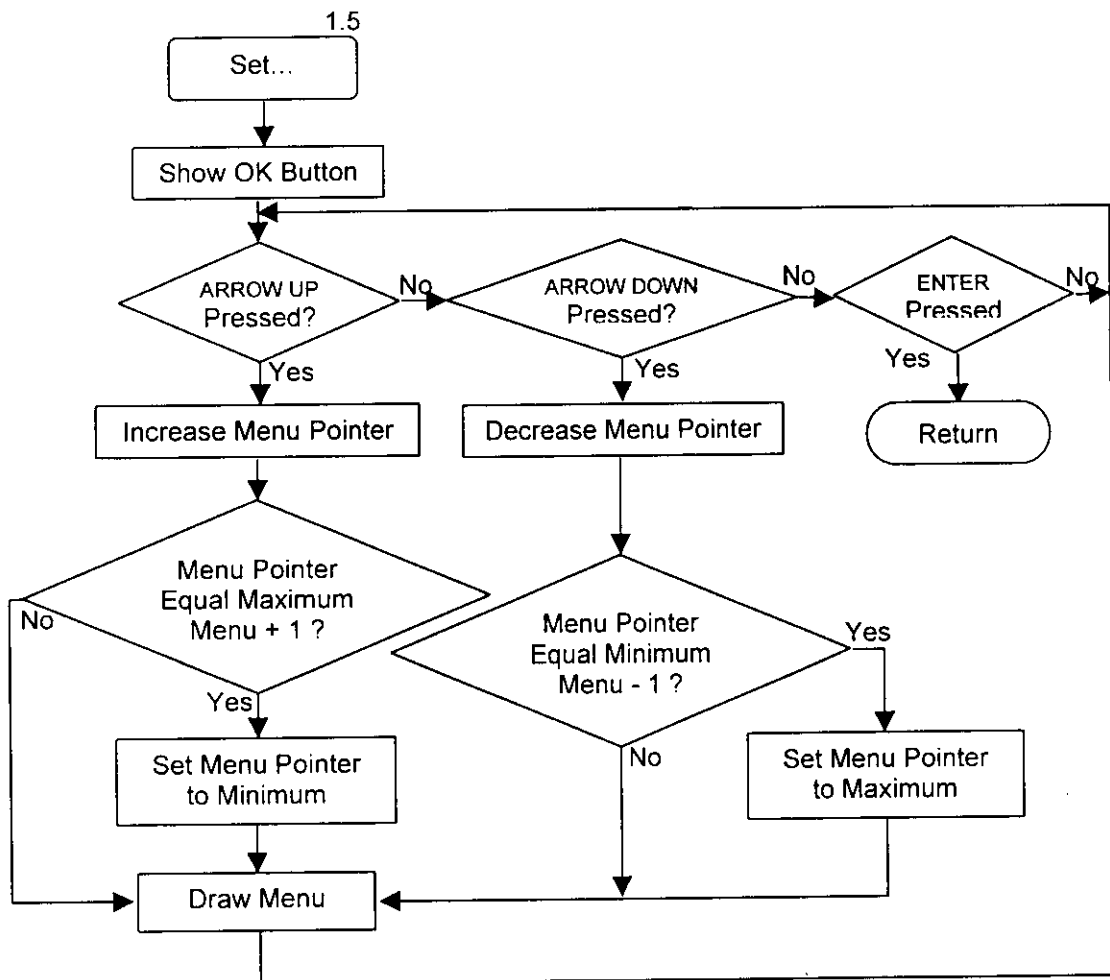
Flowchart 19: Show Menu



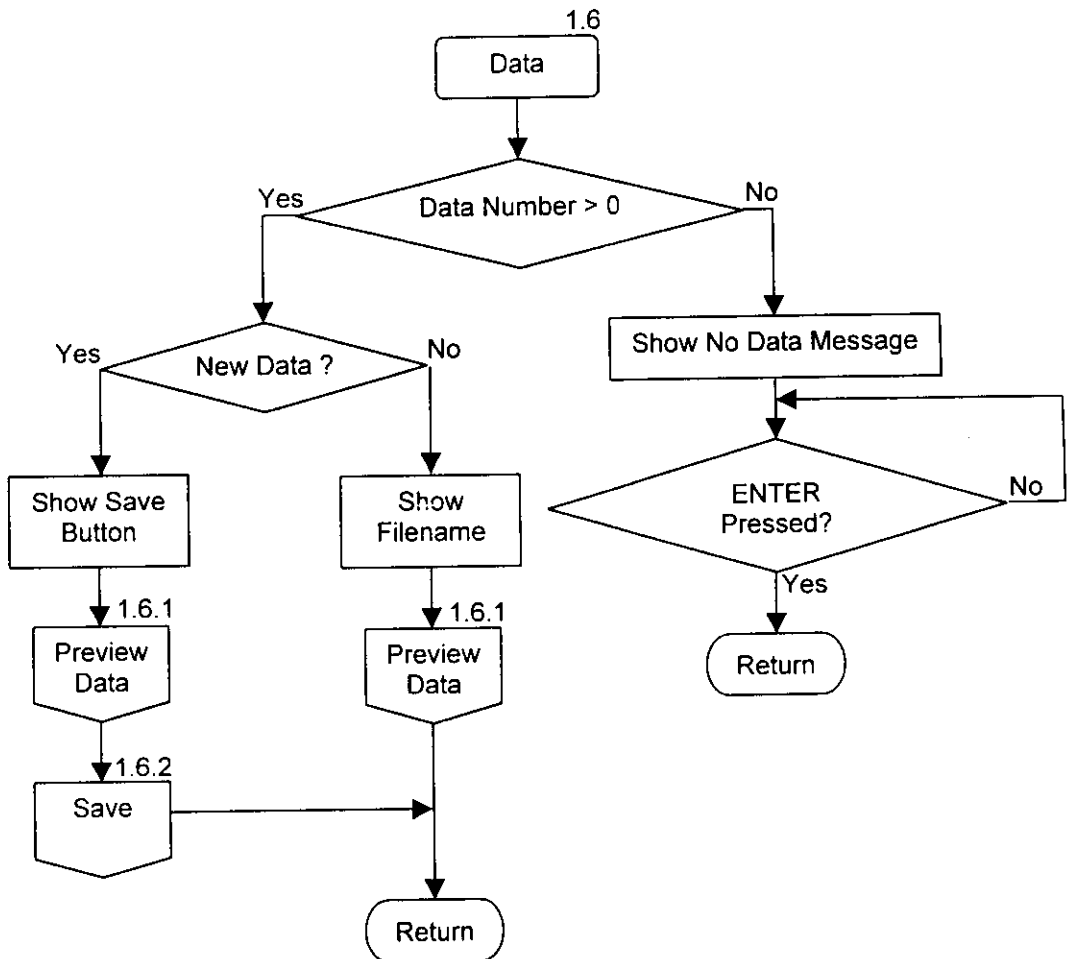
Flowchart 20: Run SP



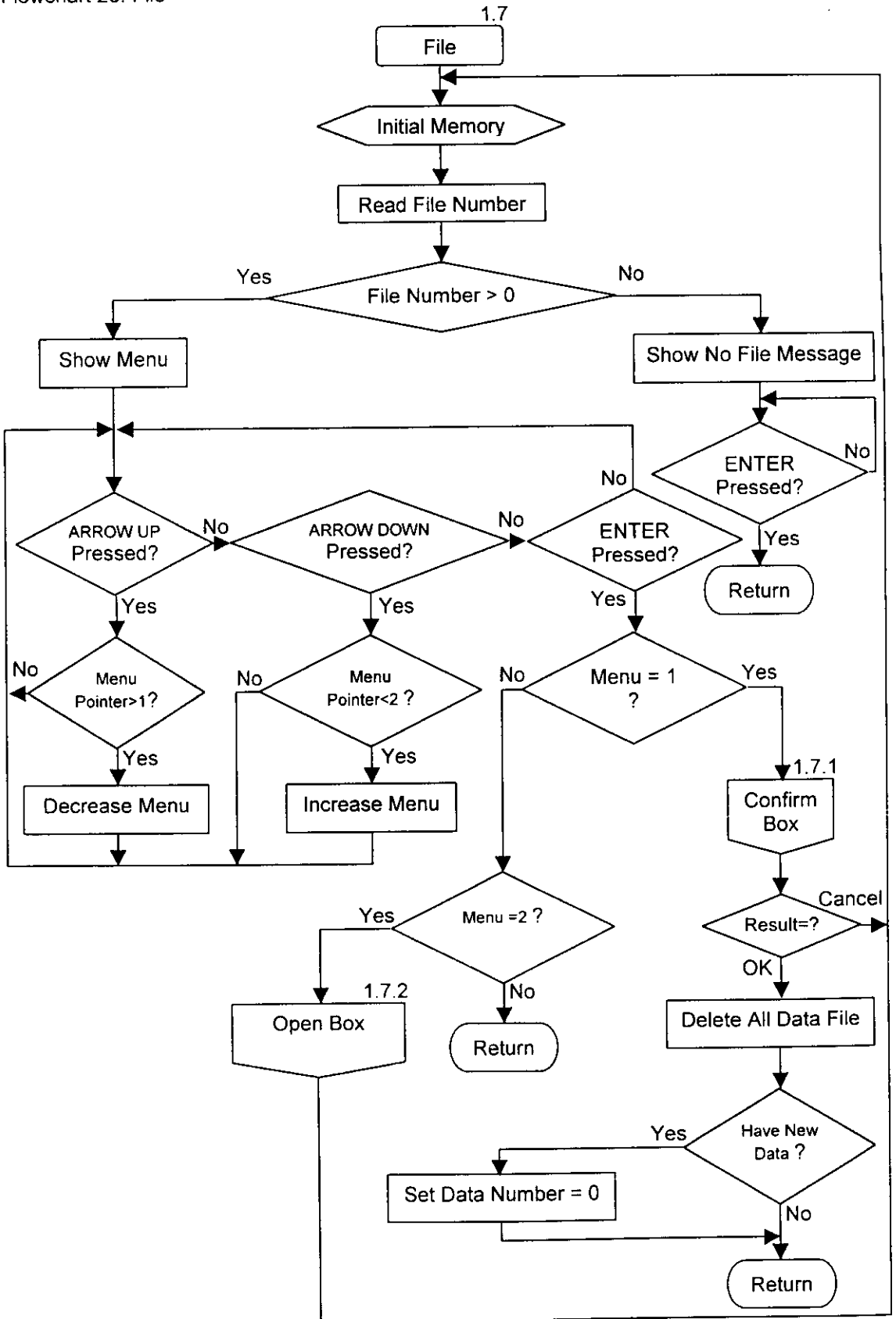
Flowchart 21: Set...



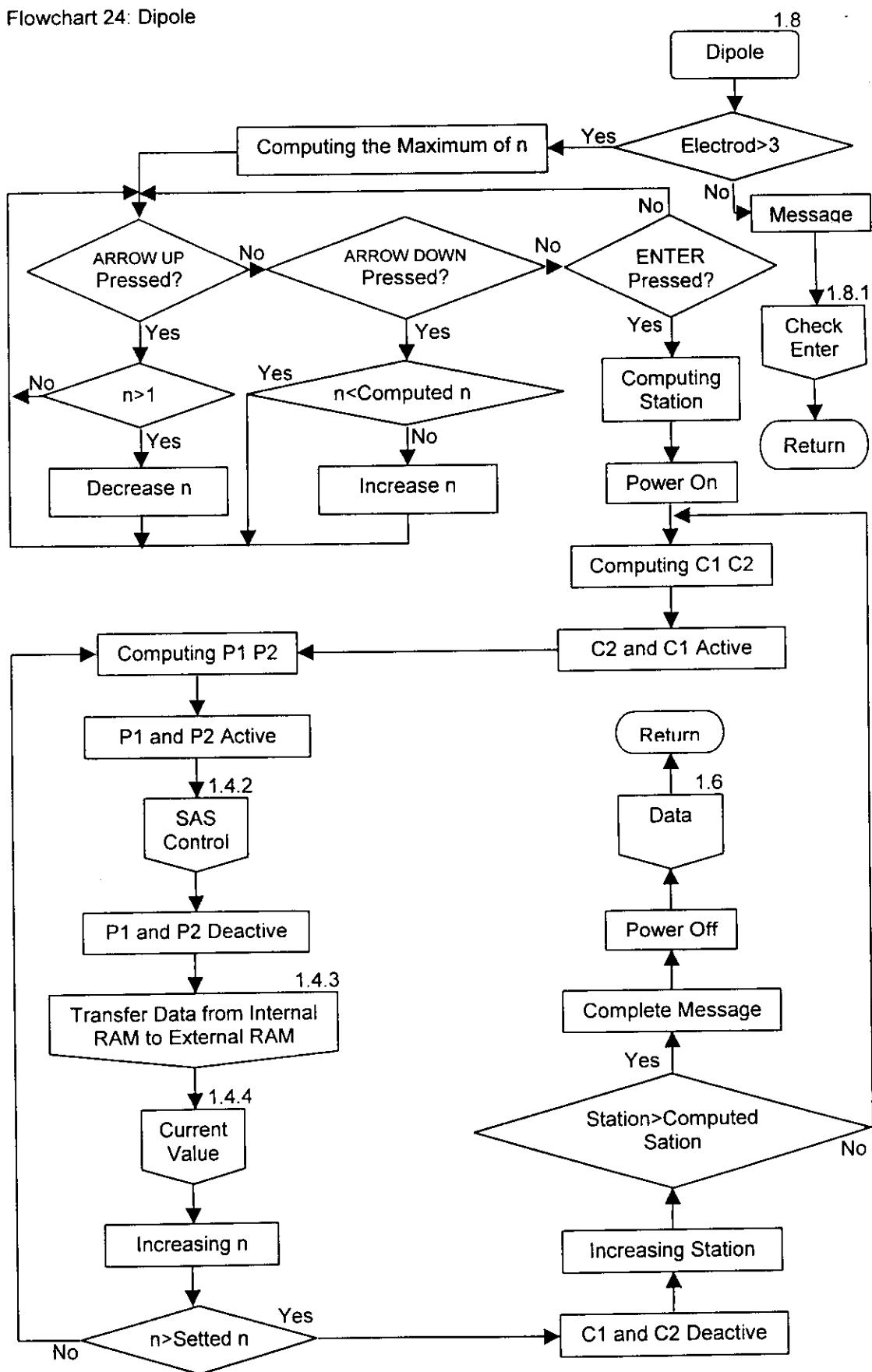
Flowchart 22: Data



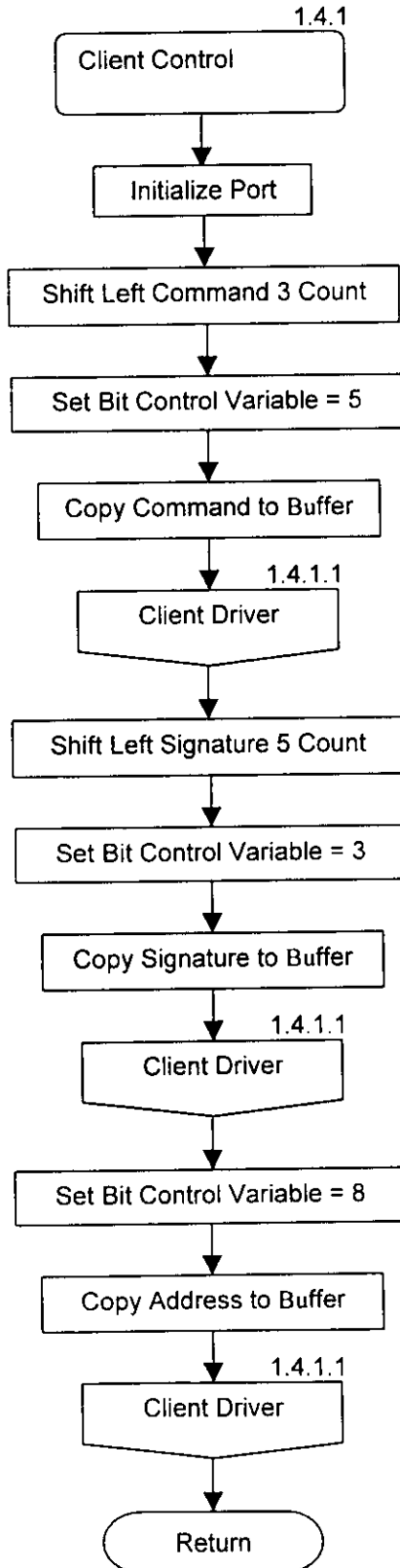
Flowchart 23: File



Flowchart 24: Dipole

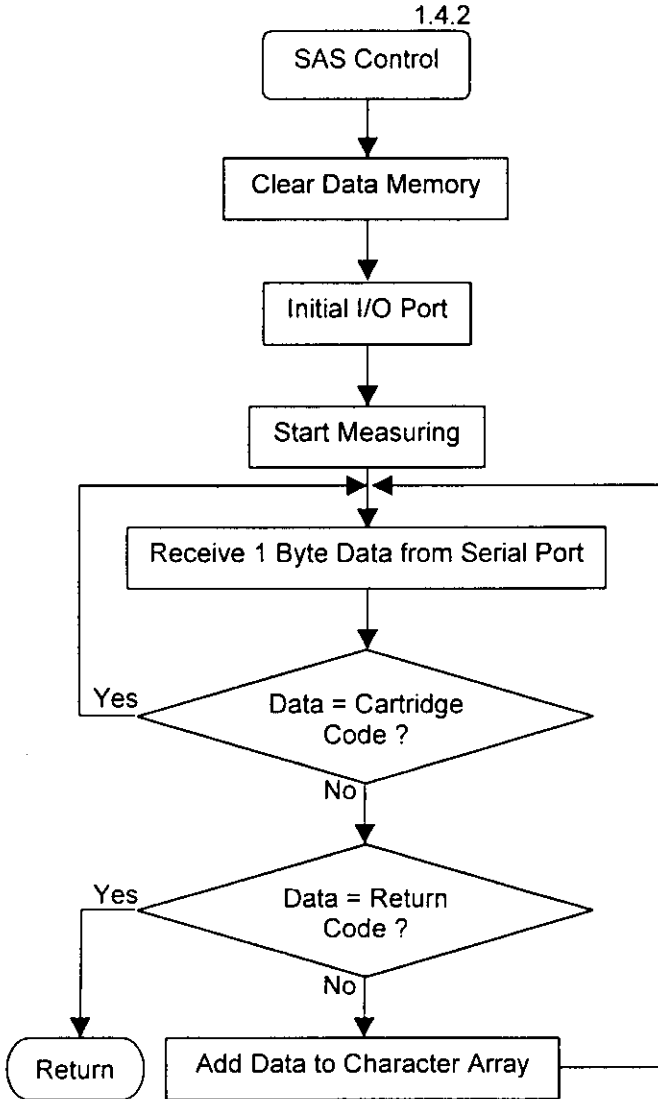


Flowchart 25: Client Control

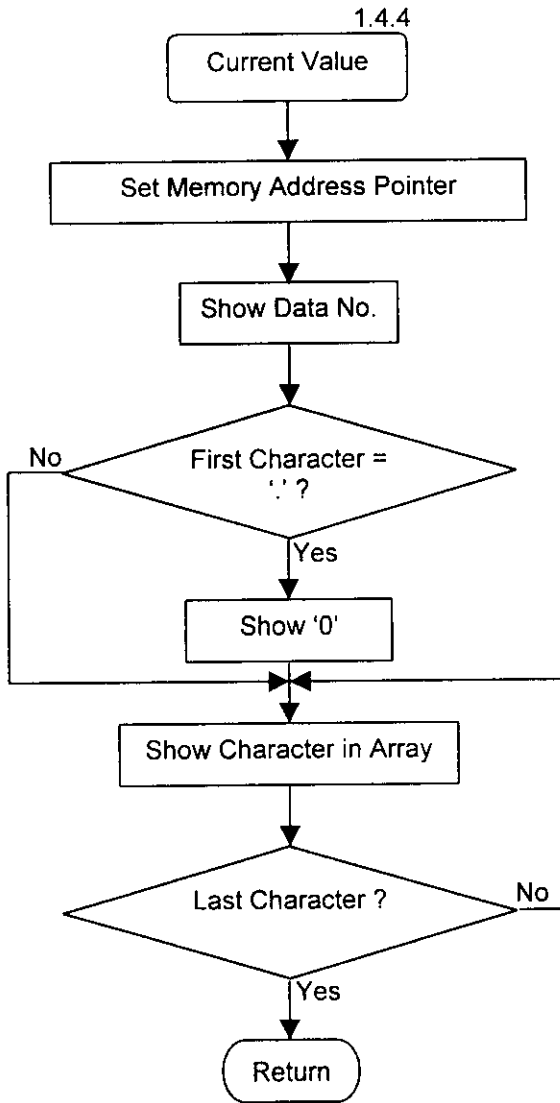




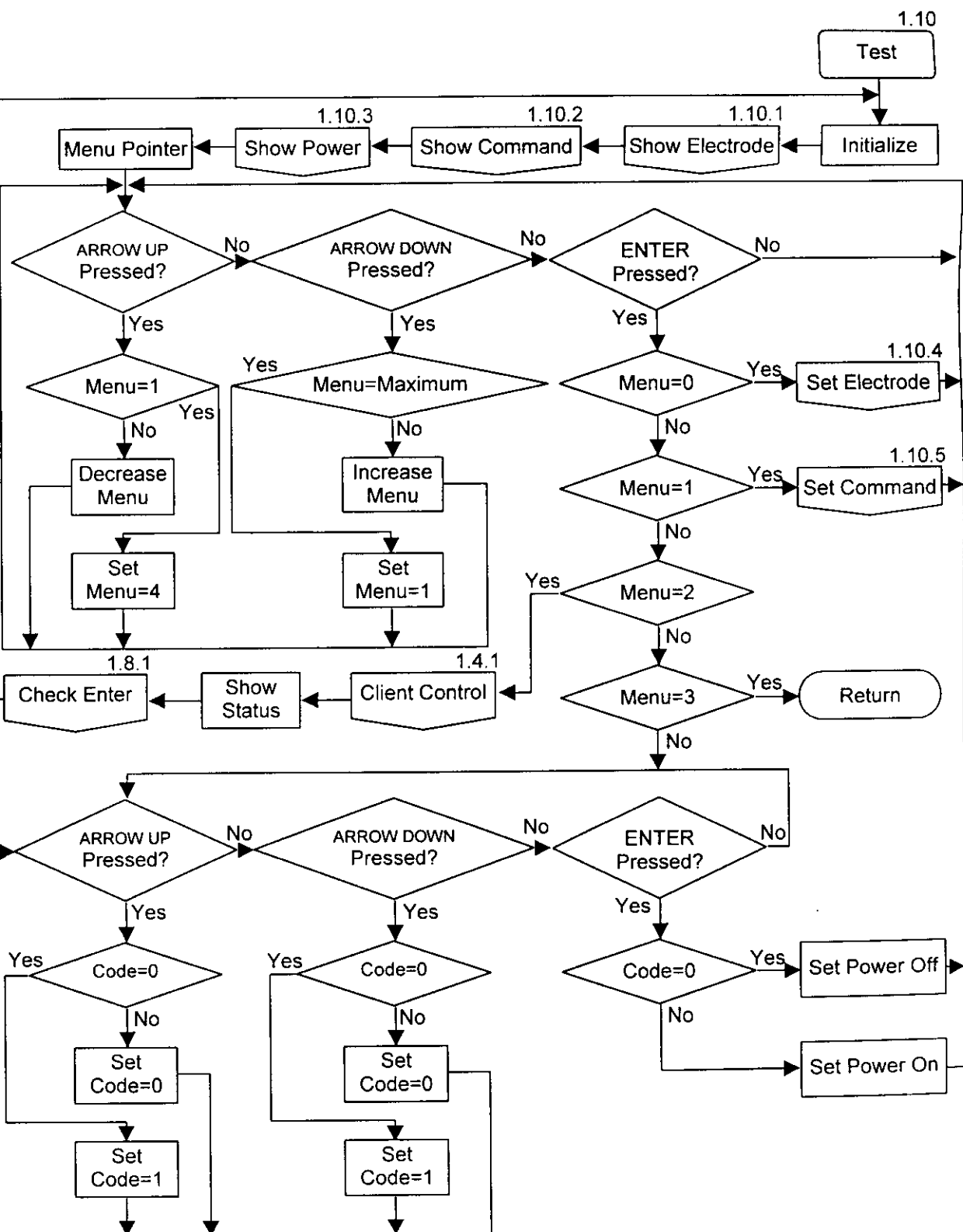
Flowchart 26: SAS Control



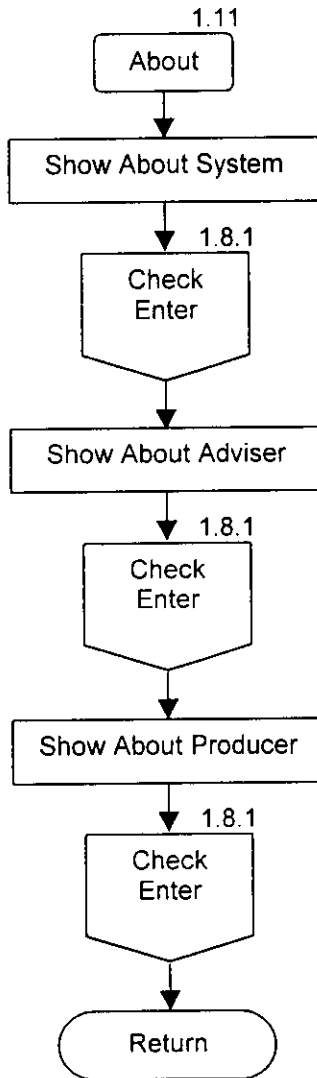
Flowchart 27:Current Value



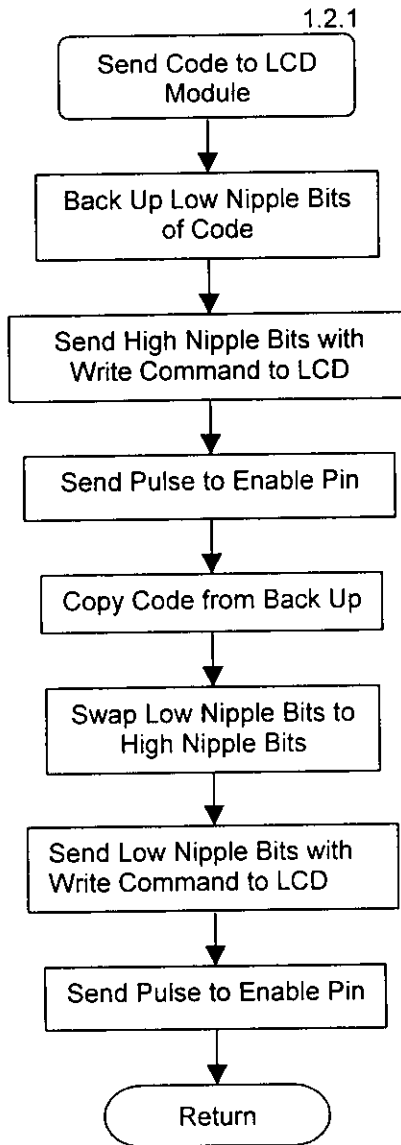
Flowchart 28: Test



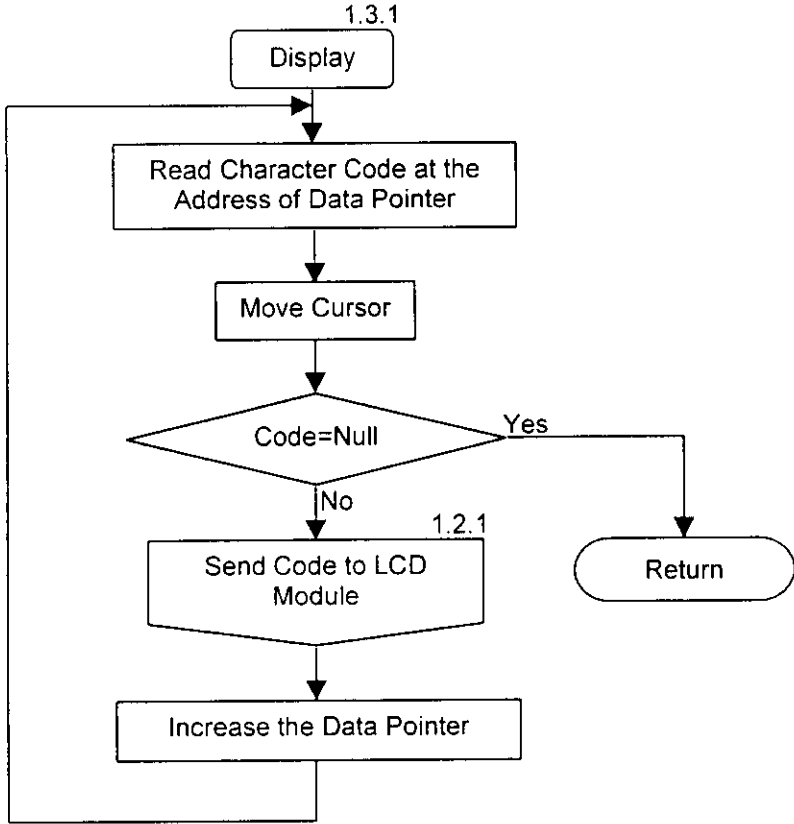
Flowchart 29: About



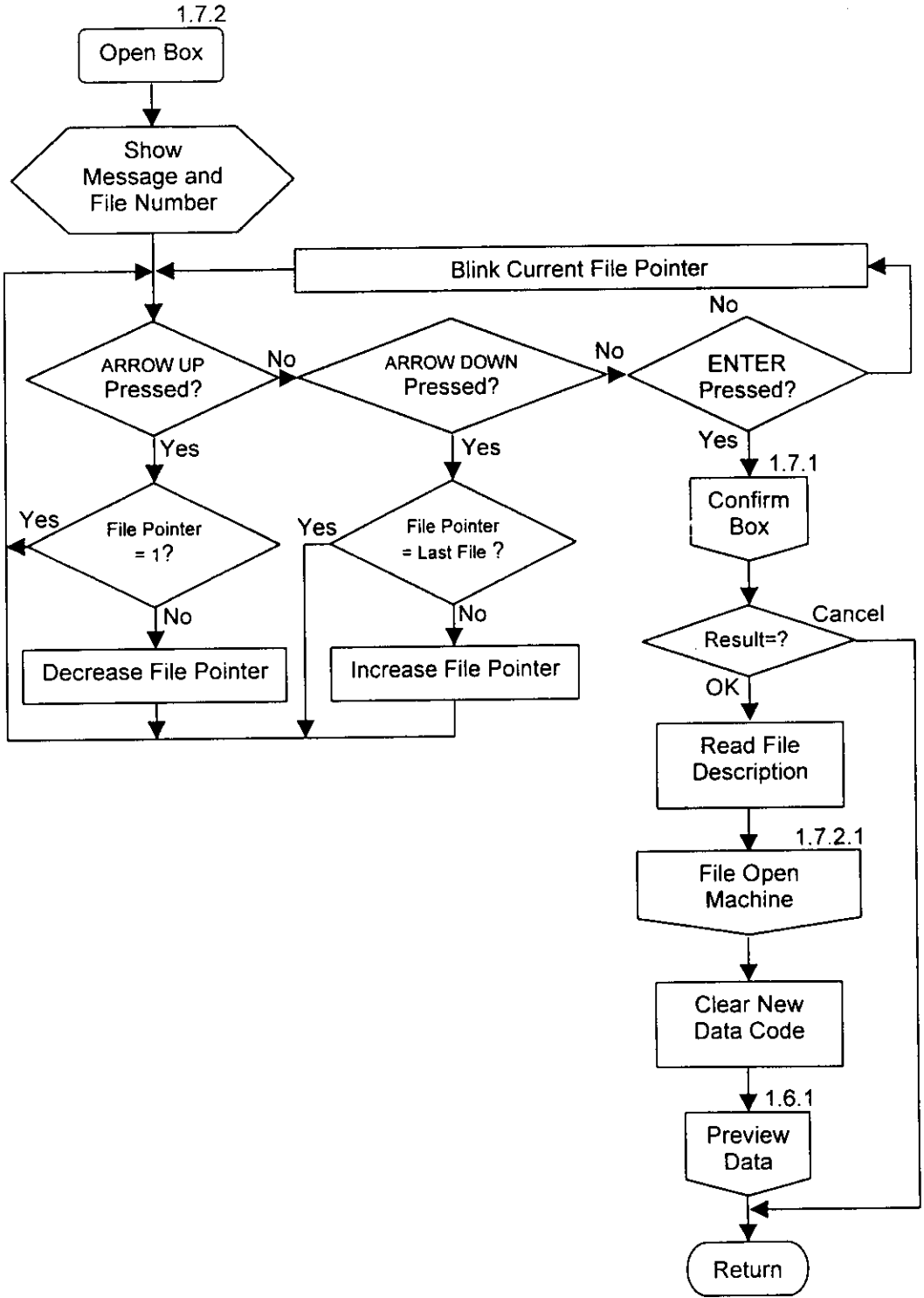
Flowchart 30: LCD Code



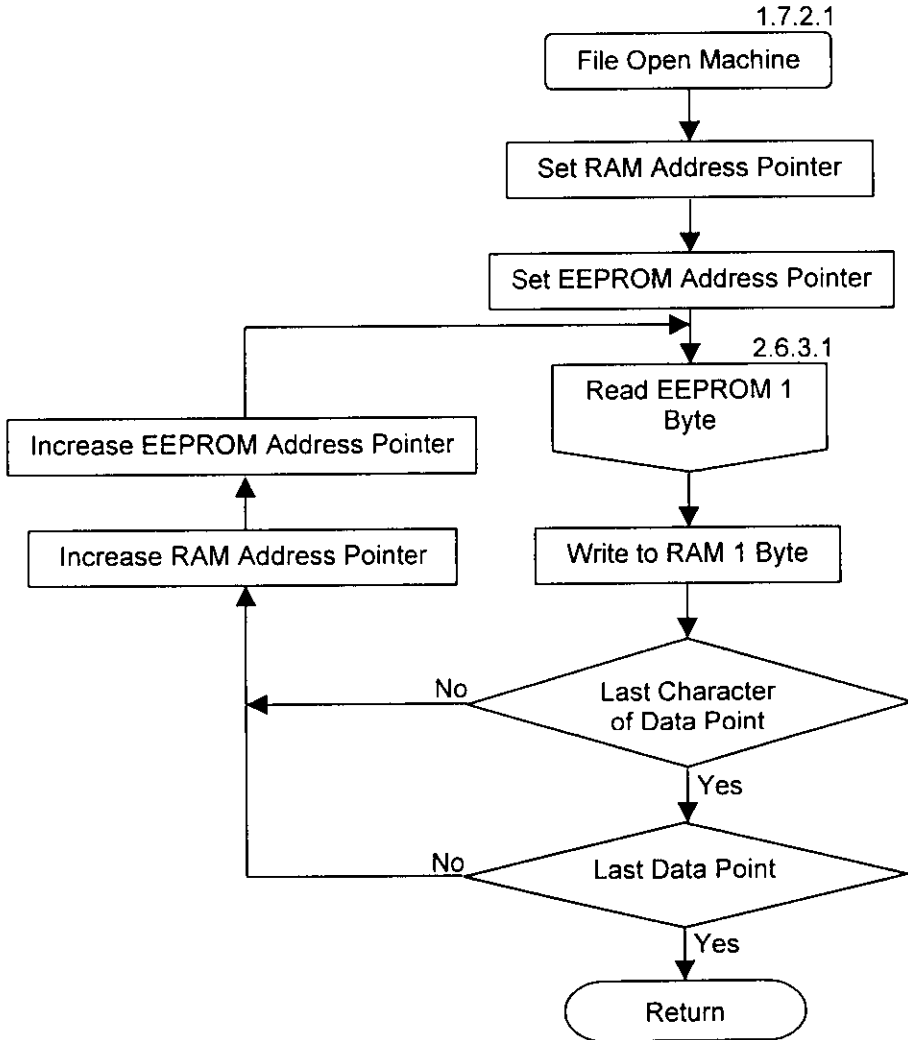
Flowchart 31: Display



Flowchart 32: Open Box

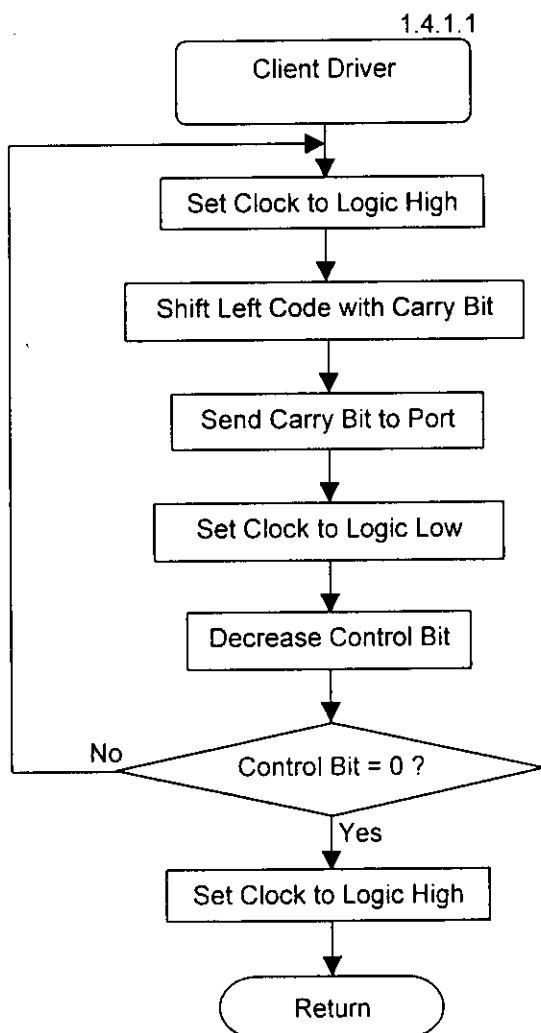


Flowchart 33: File Open Machine

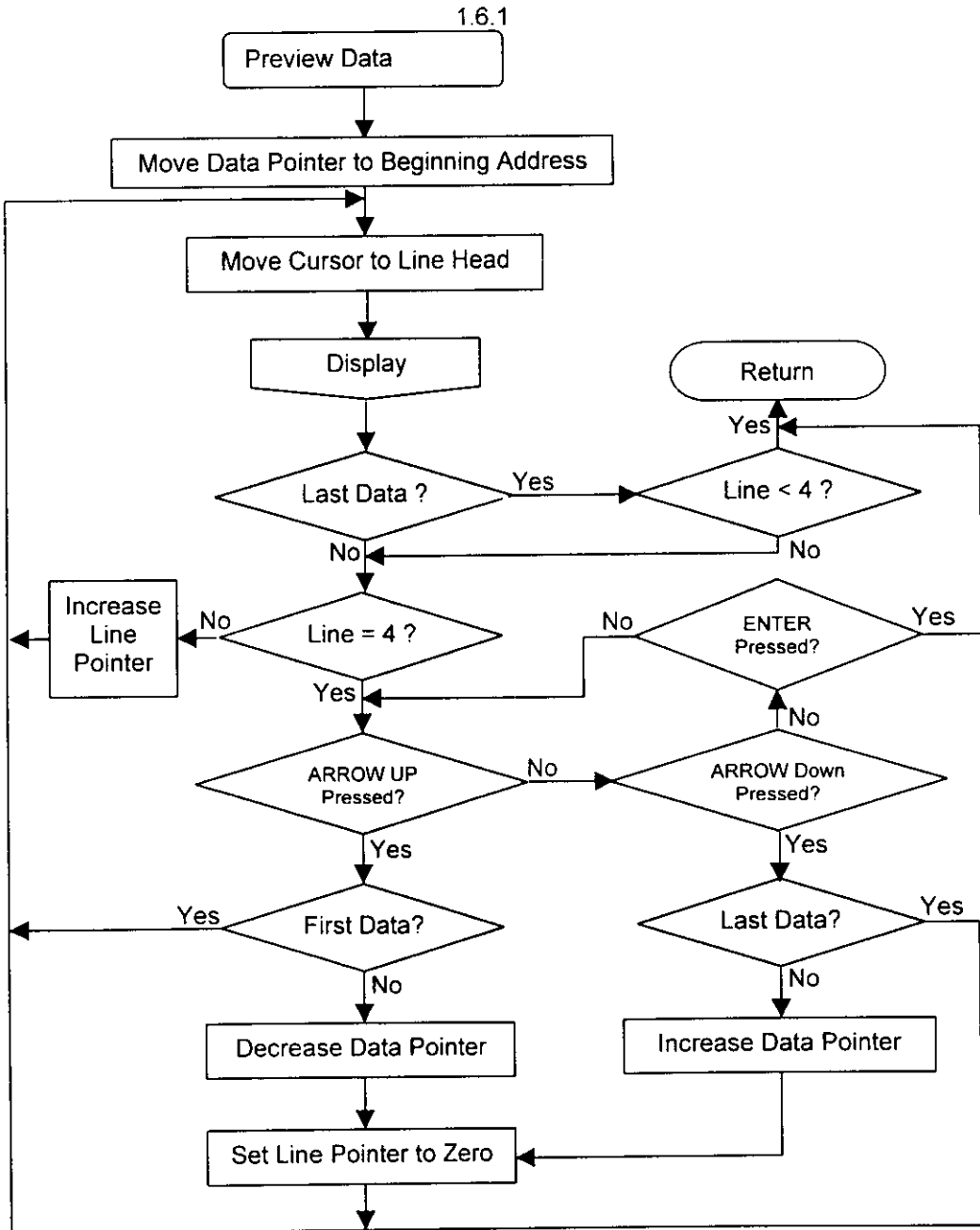




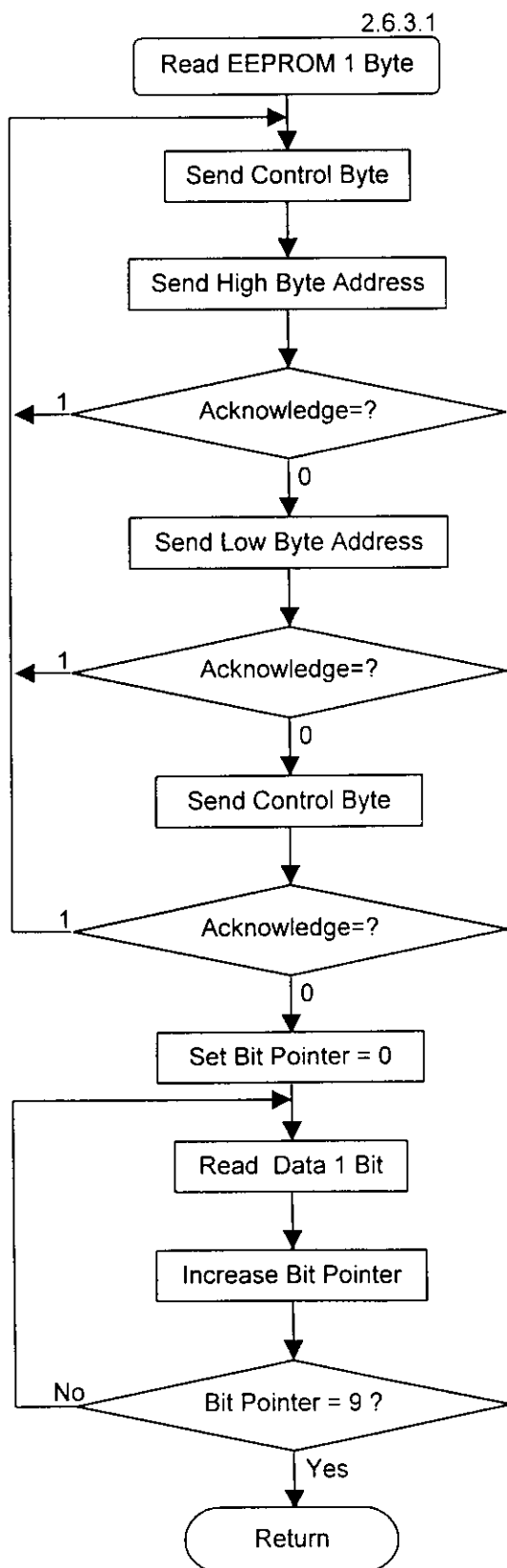
Flowchart 34: Client Driver



Flowchart 35: Preview Data



Flowchart 36: Read EEPROM 1 Byte



Flowchart 37: Client

