

Appendix B

Testing results of dipping interface

Estimated depth test and estimated velocities of non-separated networks for t_{minus} - t_{plus} inputs

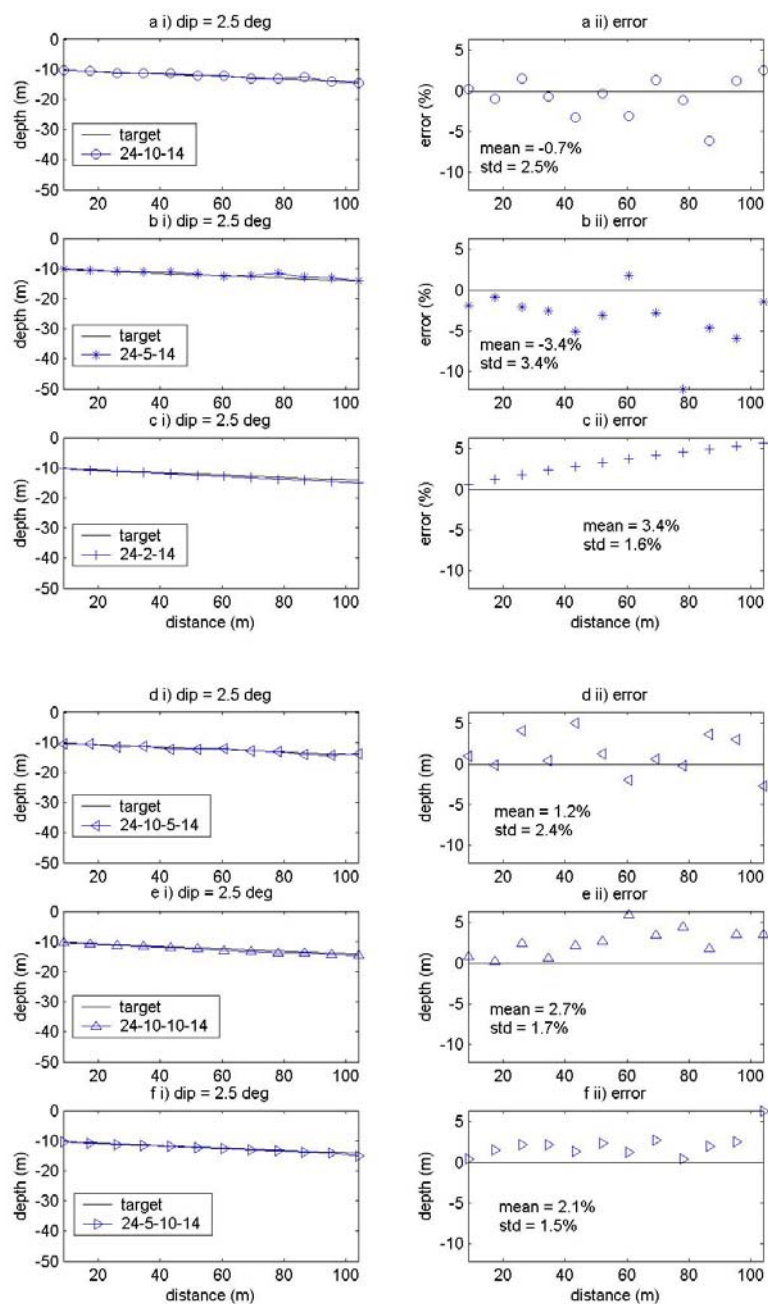


Figure B1 Predicted depth of 2.5 degree of dipping angle for t_{minus} - t_{plus} inputs

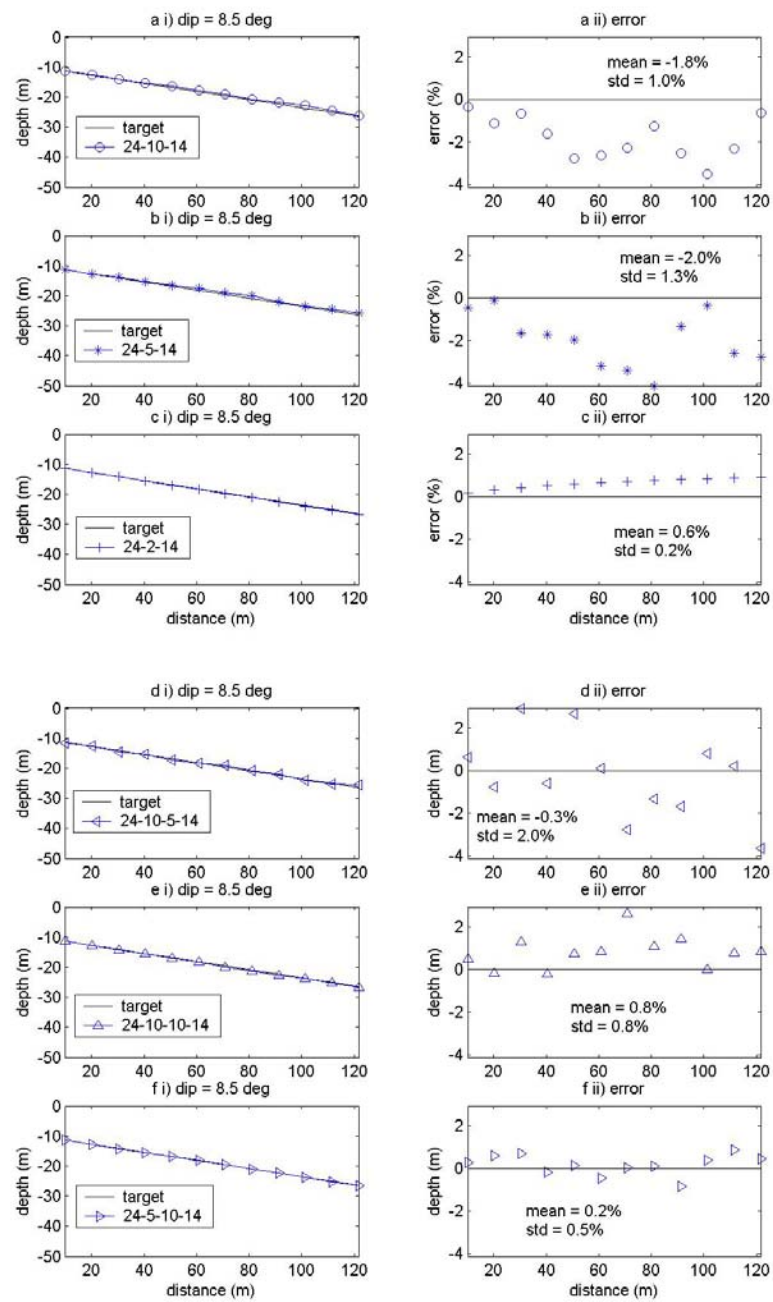


Figure B2 Predicted depth of 8.5 degree of dipping angle for $t_{\text{minus}}-t_{\text{plus}}$ inputs

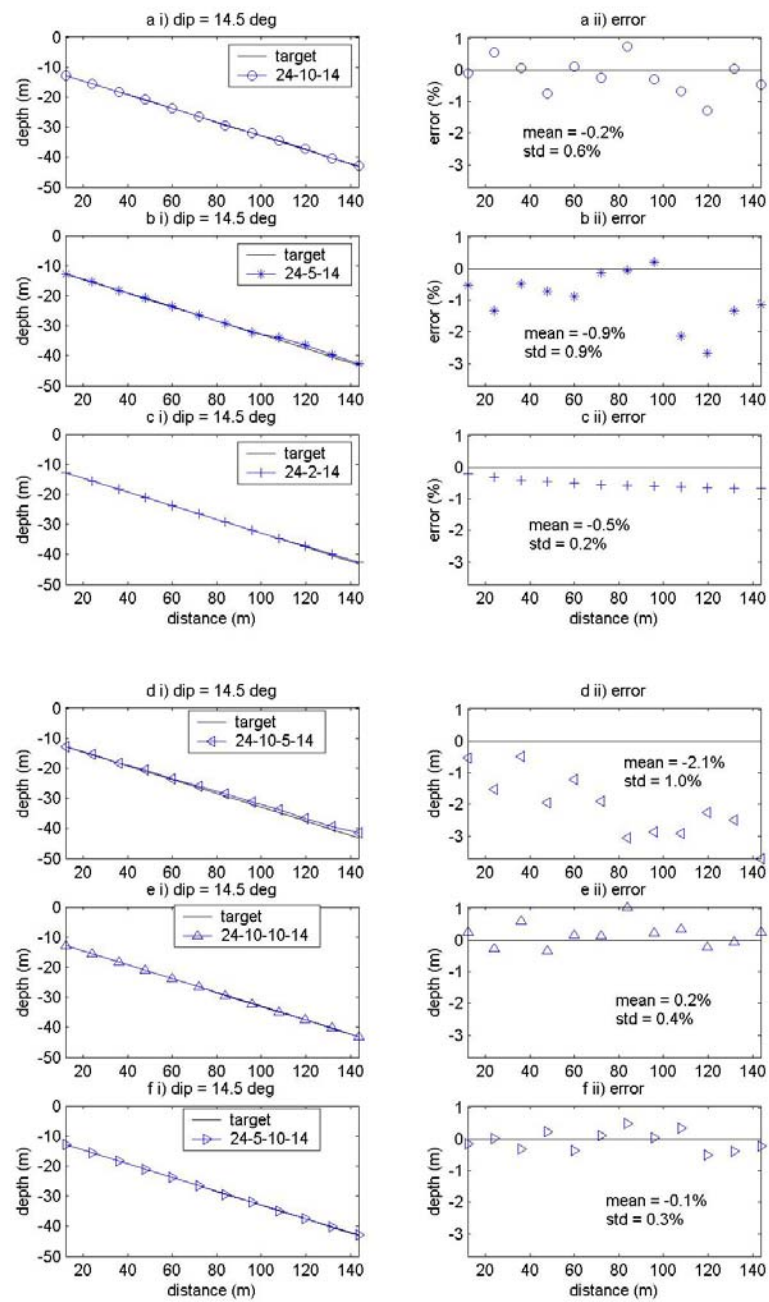


Figure B3 Predicted depth of 14.5 degree of dipping angle for $t_{\text{minus}}-t_{\text{plus}}$ inputs

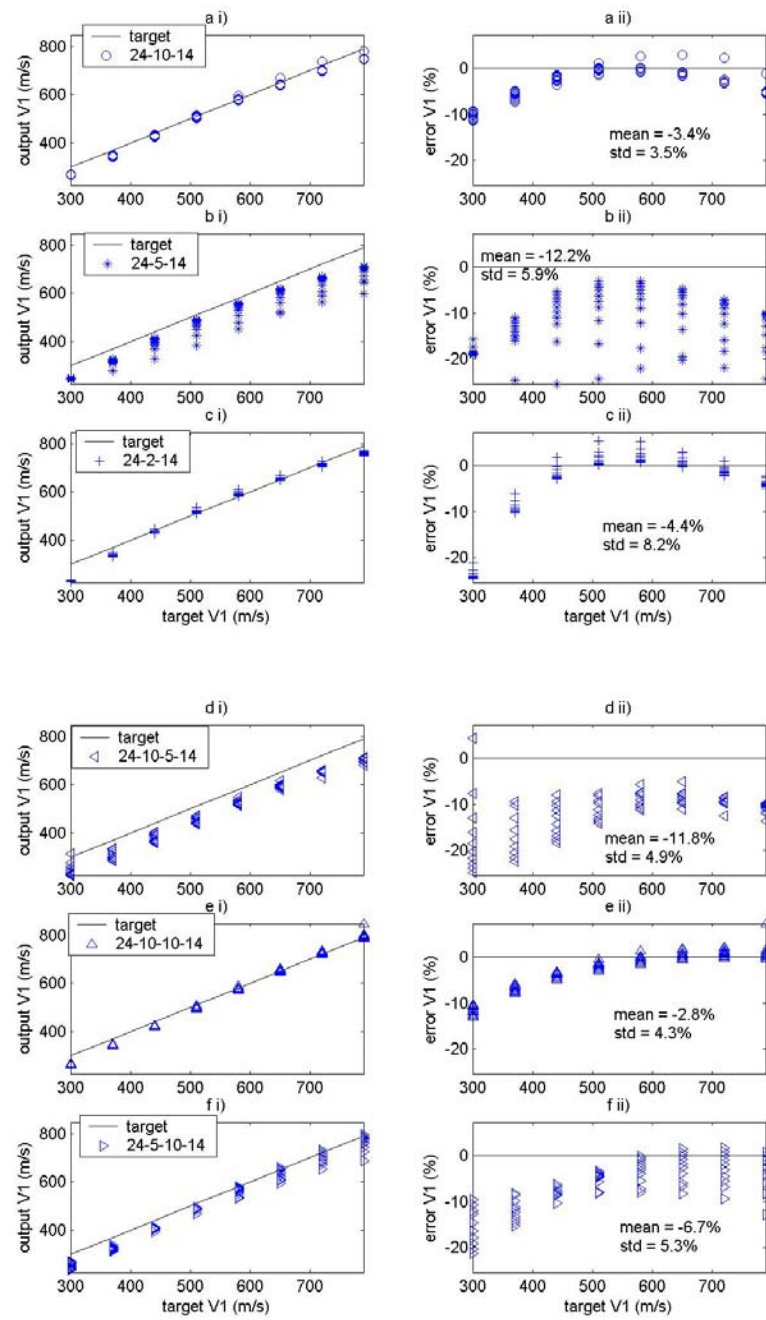


Figure B4 Predicted V_1 of Testing data 1 normalized by testing data sets for $t_{\text{minus}}-t_{\text{plus}}$ velocity networks

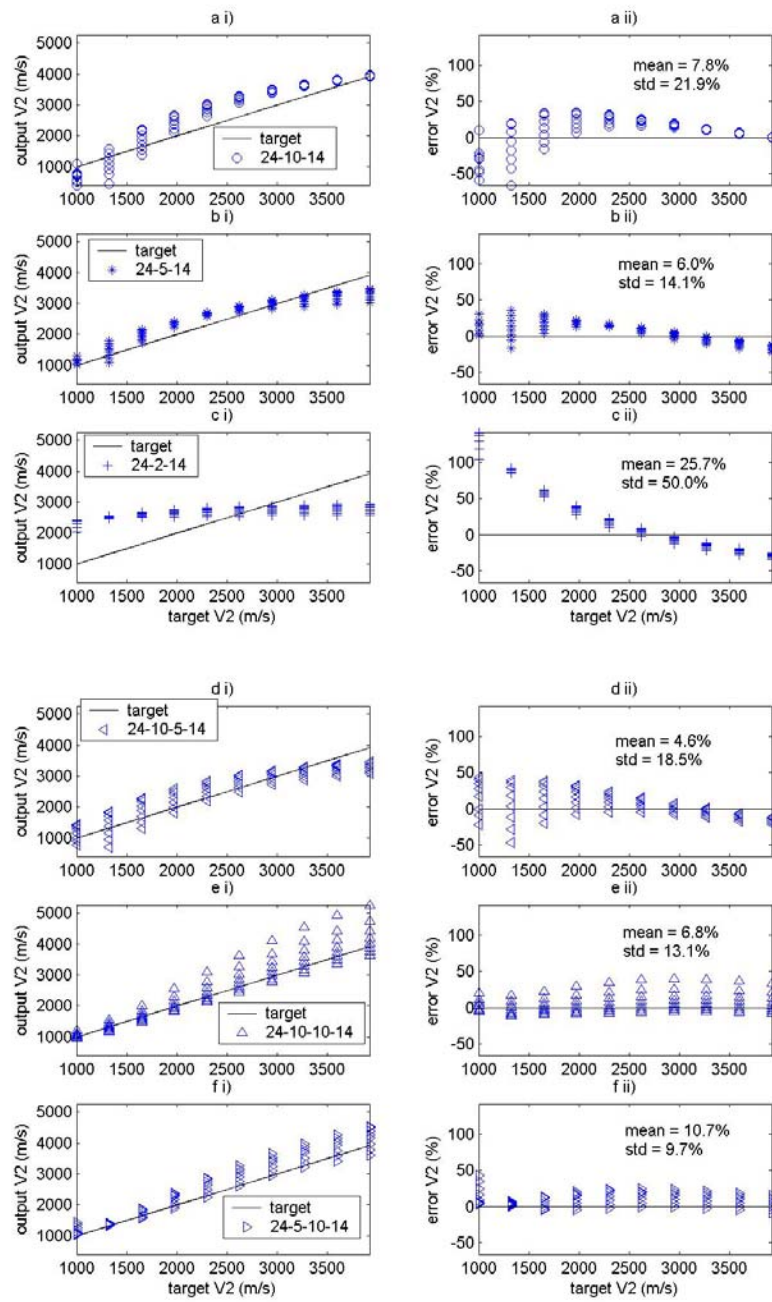


Figure B5 Predicted V_2 of Testing data 1 normalized by testing data sets for $t_{\text{minus}}-t_{\text{plus}}$ velocity networks

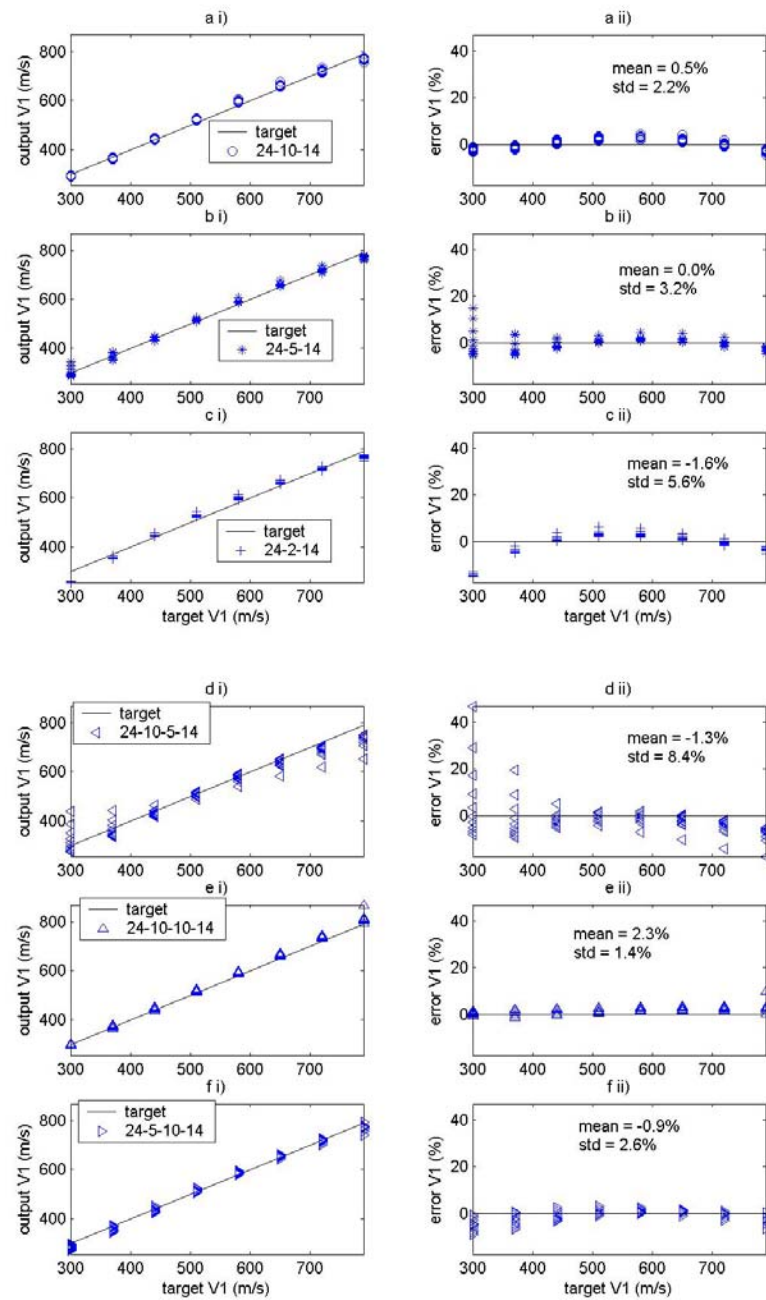


Figure B6 Predicted V_1 of Testing data 1 normalized by training data sets for $t_{\text{minus}}-t_{\text{plus}}$ velocity networks

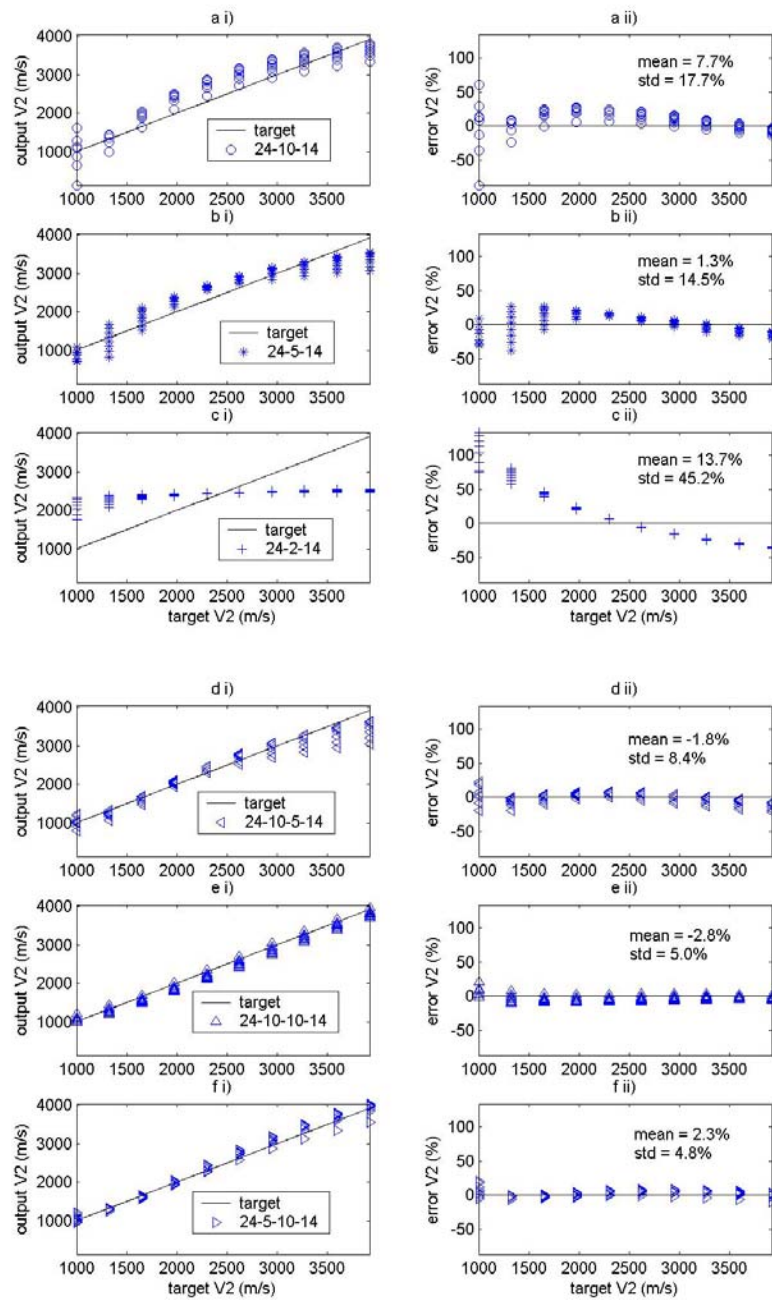


Figure B7 Predicted V_2 of Testing data 1 normalized by training data sets for $t_{\text{minus}}-t_{\text{plus}}$ velocity networks

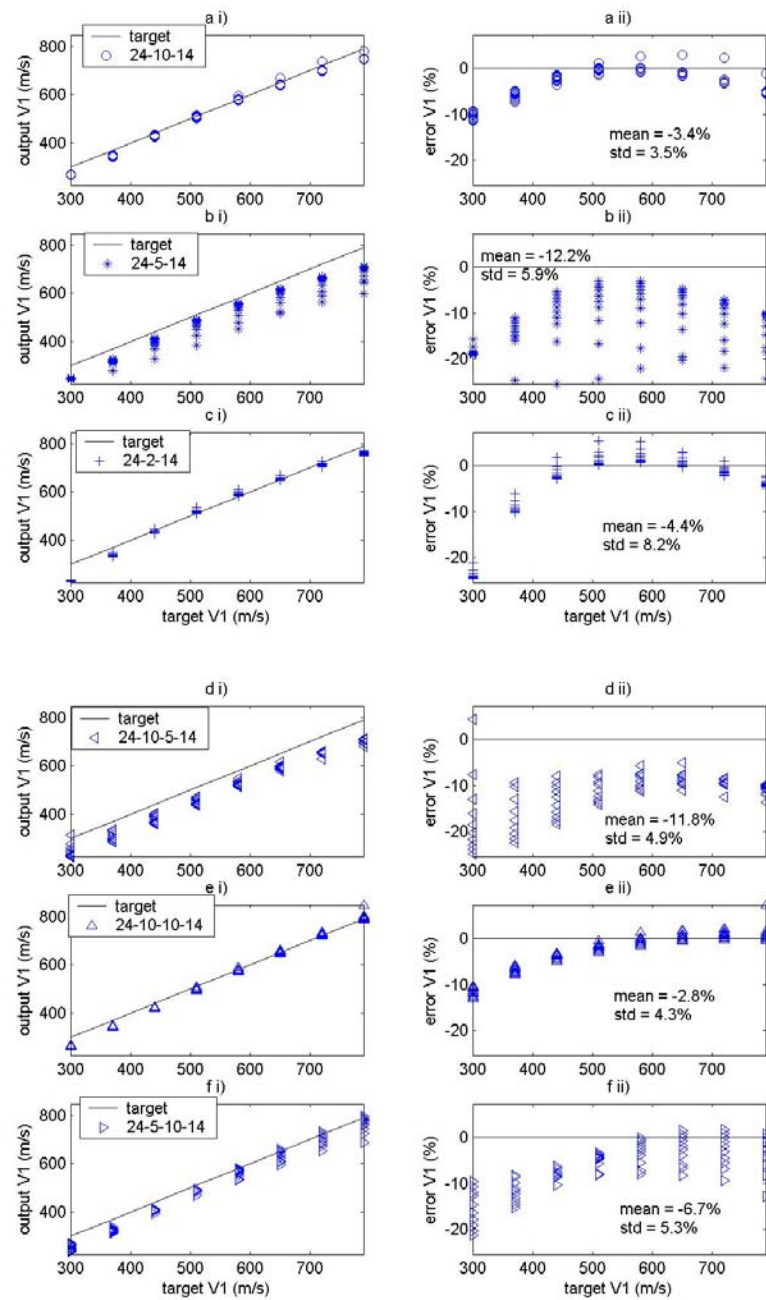


Figure B8 Predicted V_1 of Testing data 2 normalized by testing data sets for $t_{\text{minus}}-t_{\text{plus}}$ velocity networks

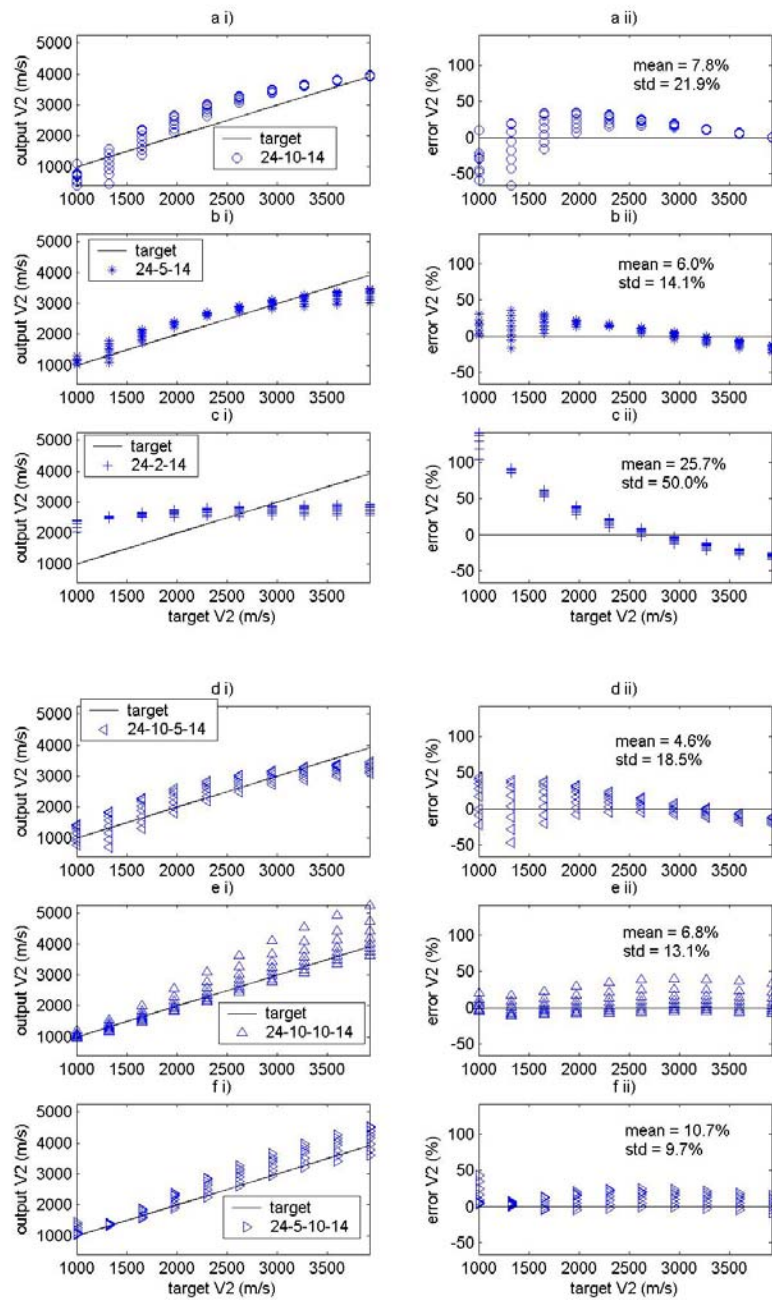


Figure B9 Predicted V_2 of Testing data 2 normalized by testing data sets for $t_{\text{minus}}-t_{\text{plus}}$ velocity networks

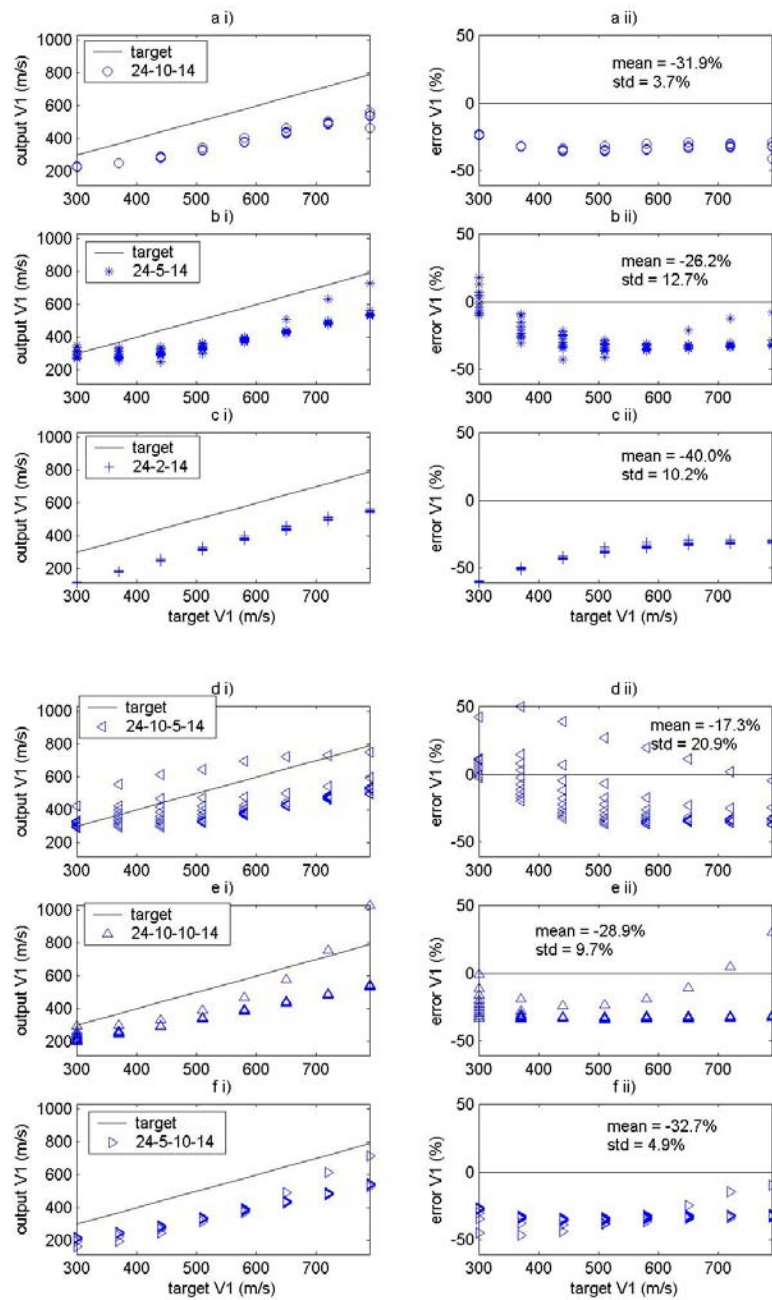


Figure B10 Predicted V_1 of Testing data 2 normalized by training data sets for t_{minus} - t_{plus} velocity networks

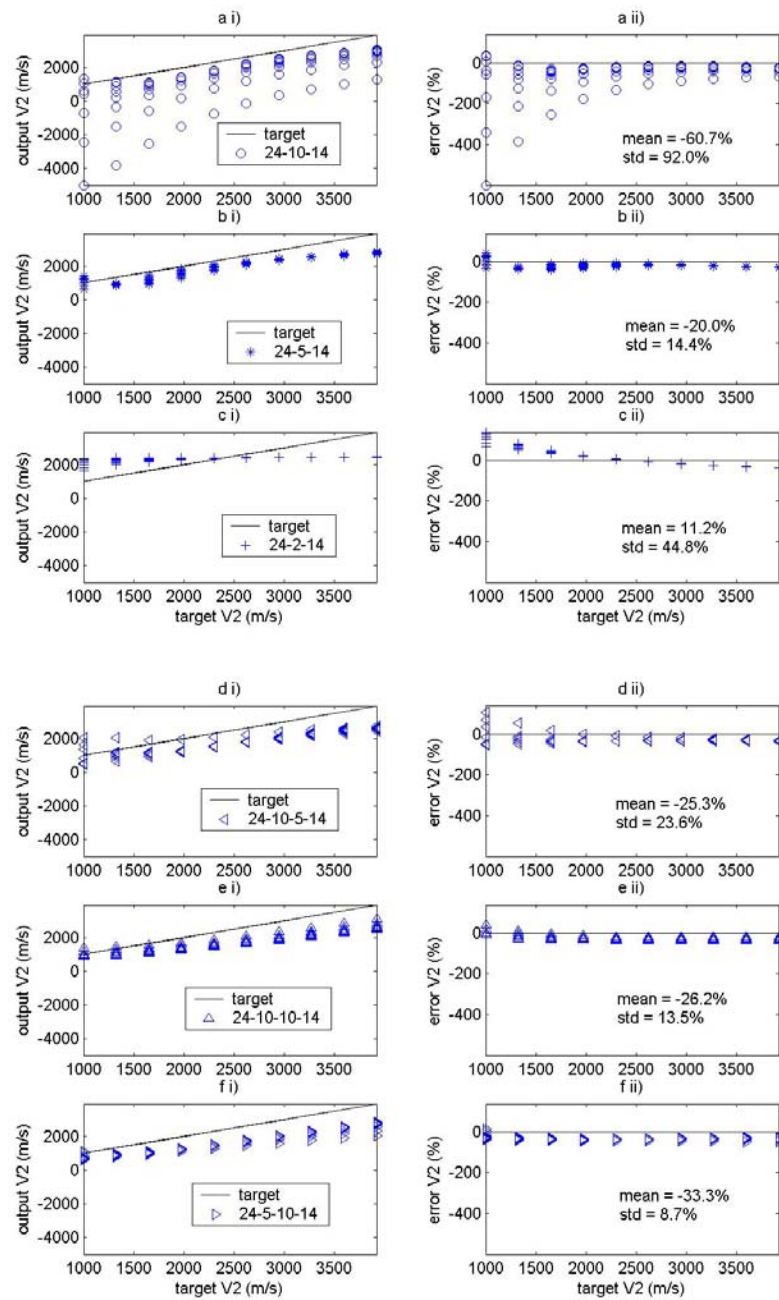


Figure B11 Predicted V_2 of Testing data 2 normalized by training data sets for t_{minus} -
 t_{plus} velocity networks

Estimated depth test and estimated velocities of non-separated networks for travel time inputs

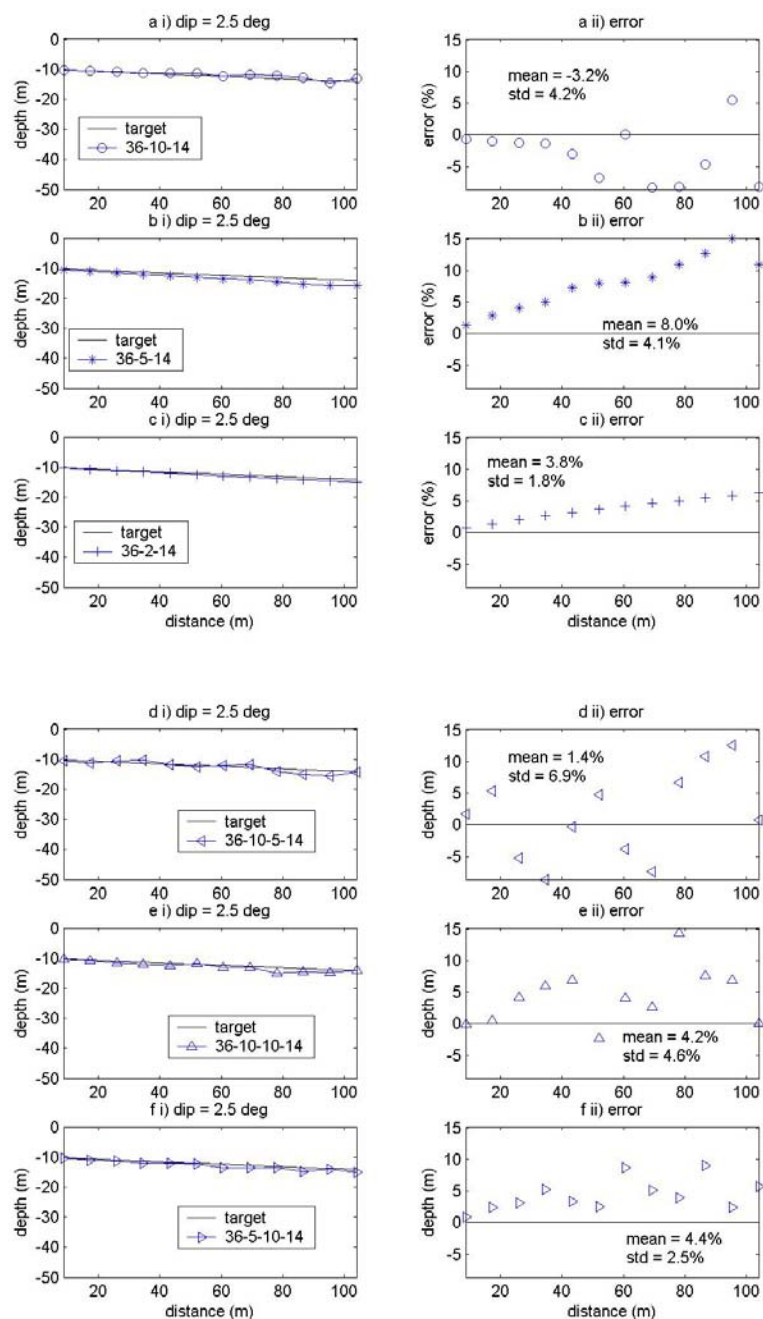


Figure B12 Predicted depth of 2.5 degree of dipping angle for travel time inputs

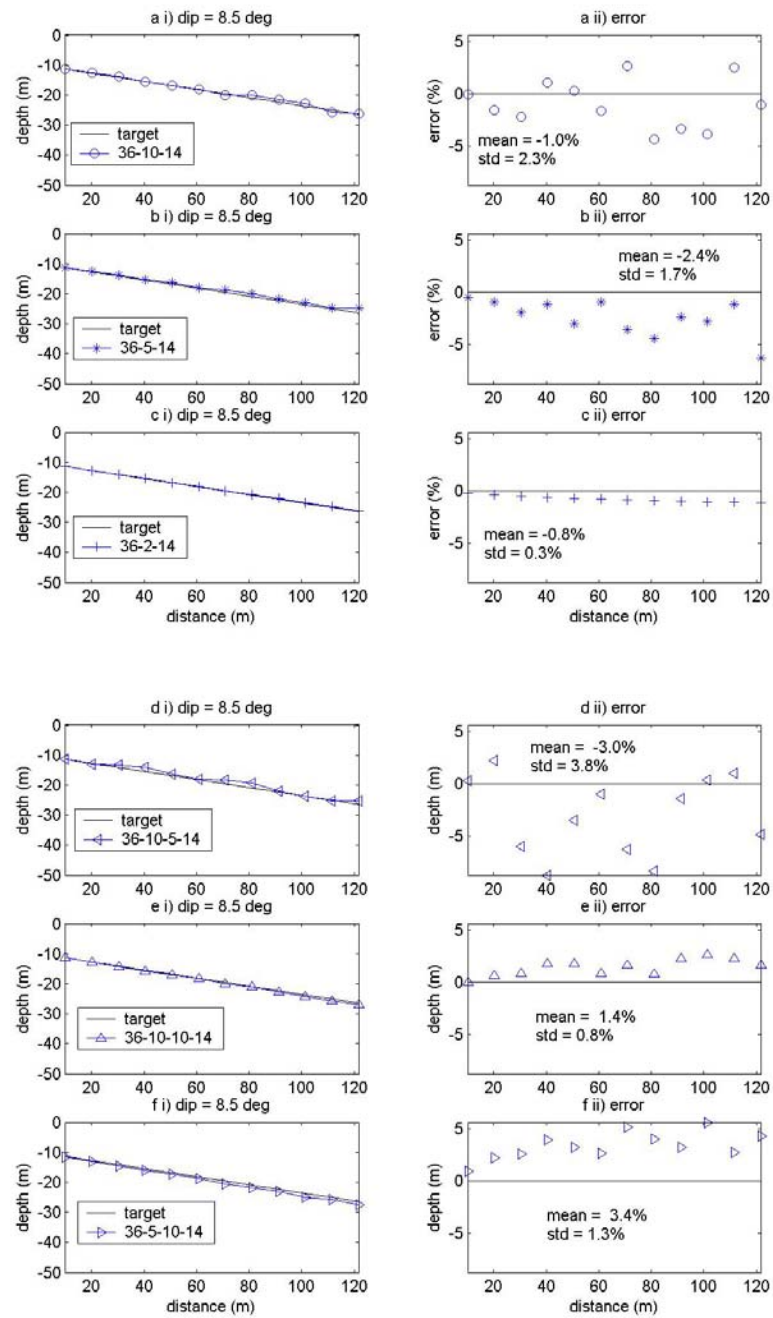


Figure B13 Predicted depth of 8.5 degree of dipping angle for travel time inputs

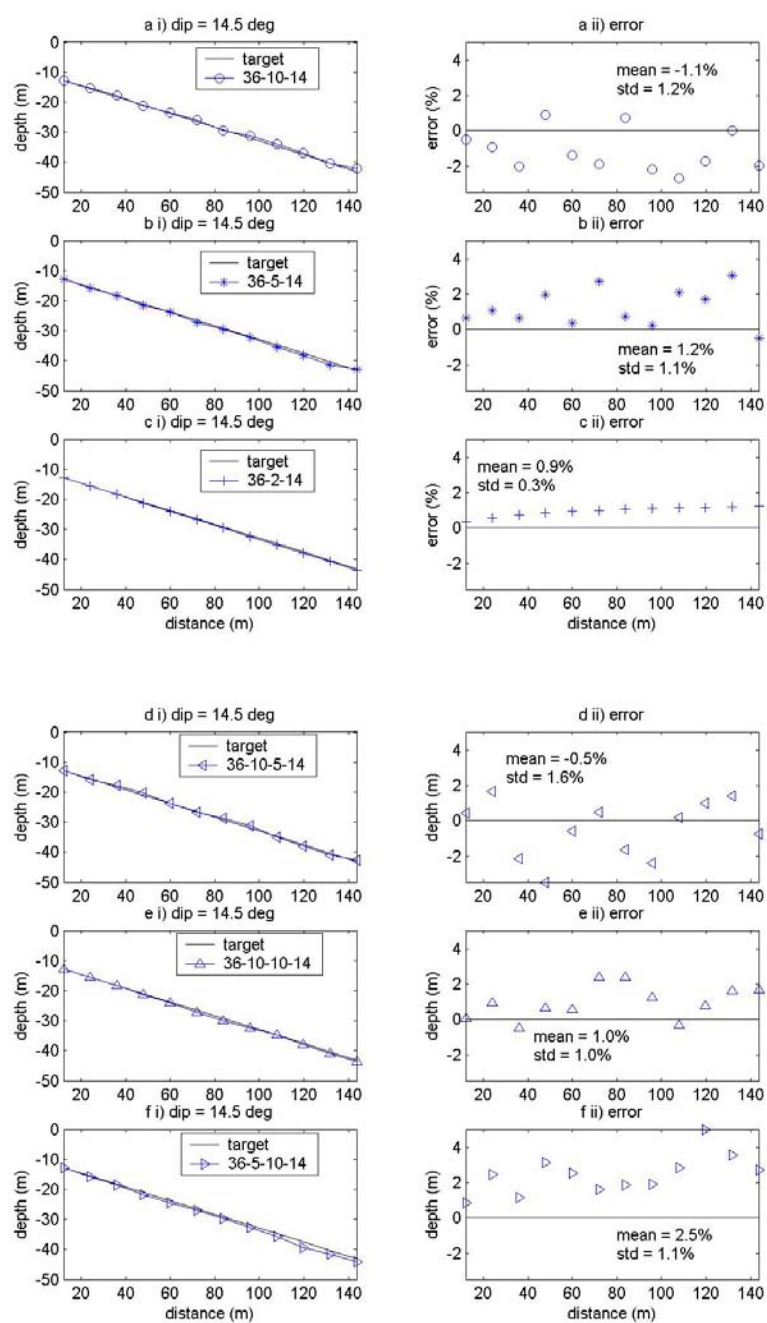


Figure B14 Predicted depth of 14.5 degree of dipping angle for travel time inputs

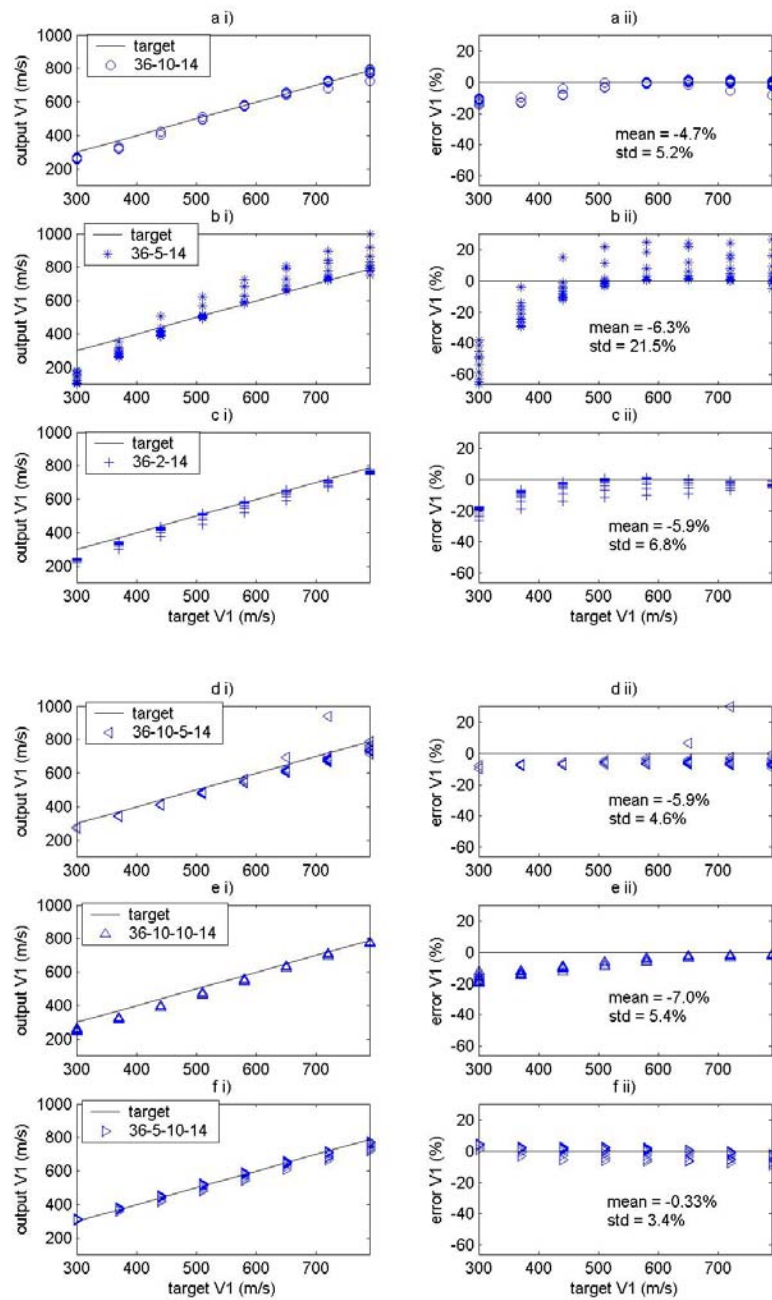


Figure B15 Predicted V_1 of Testing data 1 normalized by testing data sets for travel time velocity networks

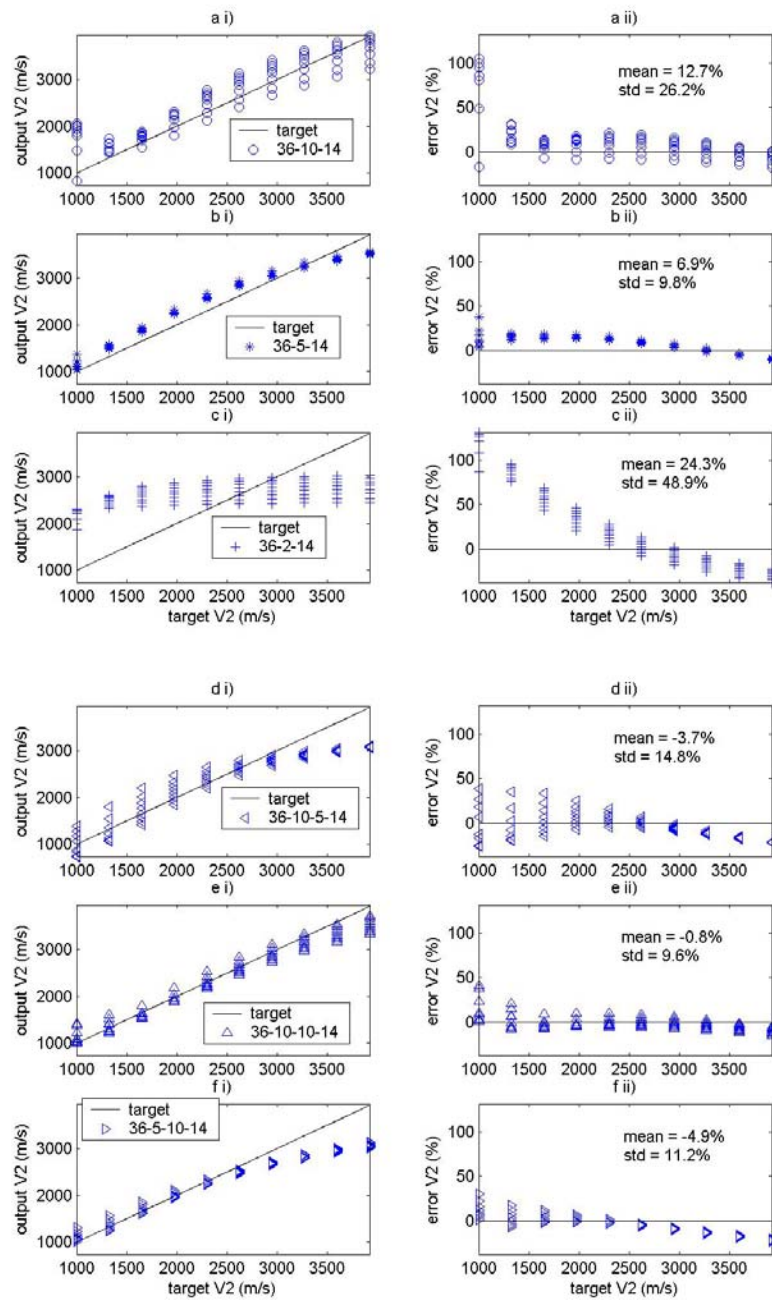


Figure B16 Predicted V_2 of Testing data 1 normalized by testing data sets for travel time velocity networks

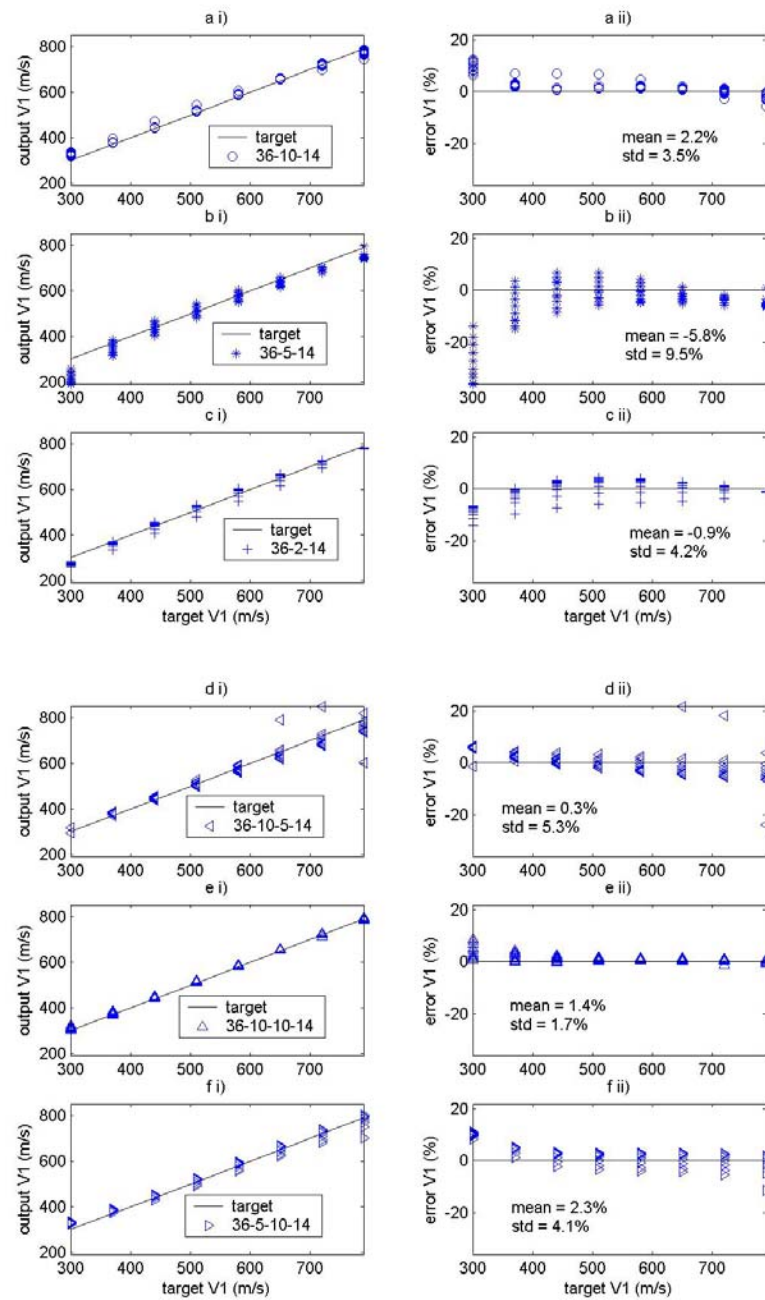


Figure B17 Predicted V_1 of Testing data 1 normalized by training data sets for travel time velocity networks

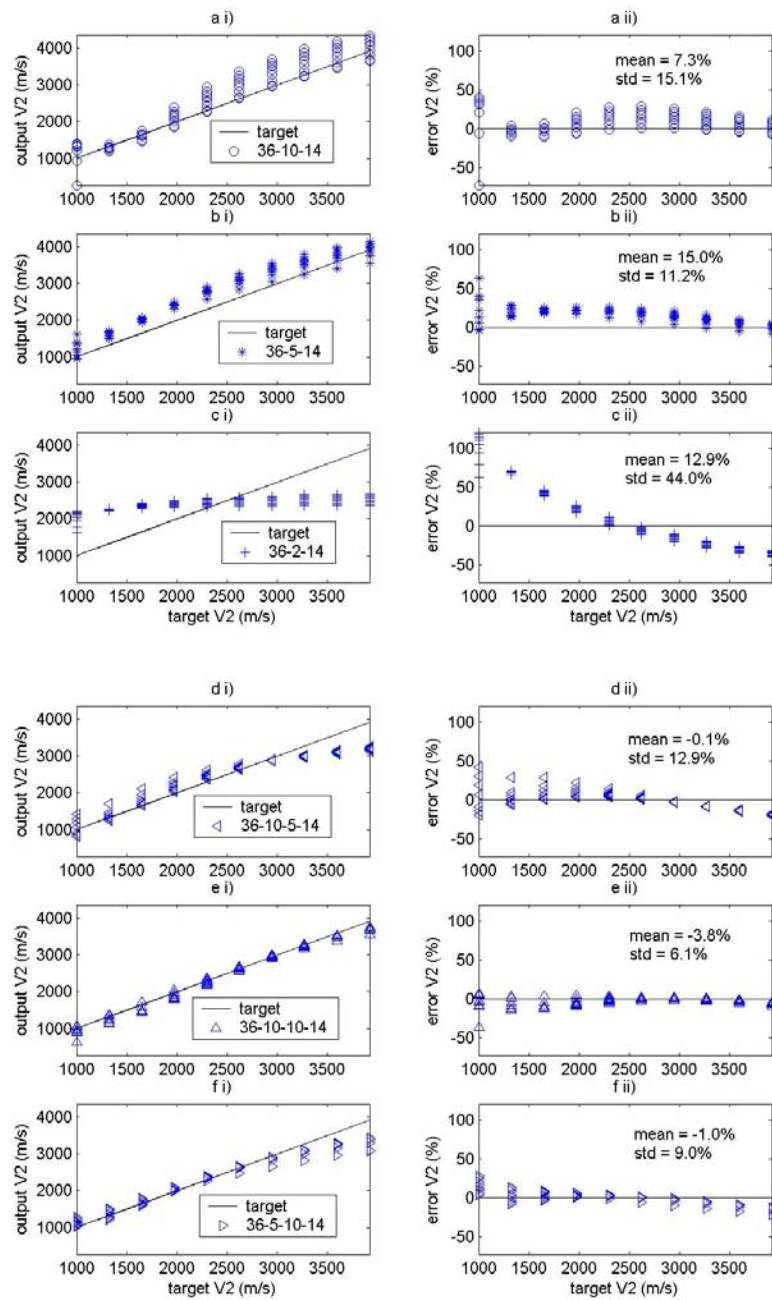


Figure B18 Predicted V_2 of Testing data 1 normalized by training data sets for travel time velocity networks

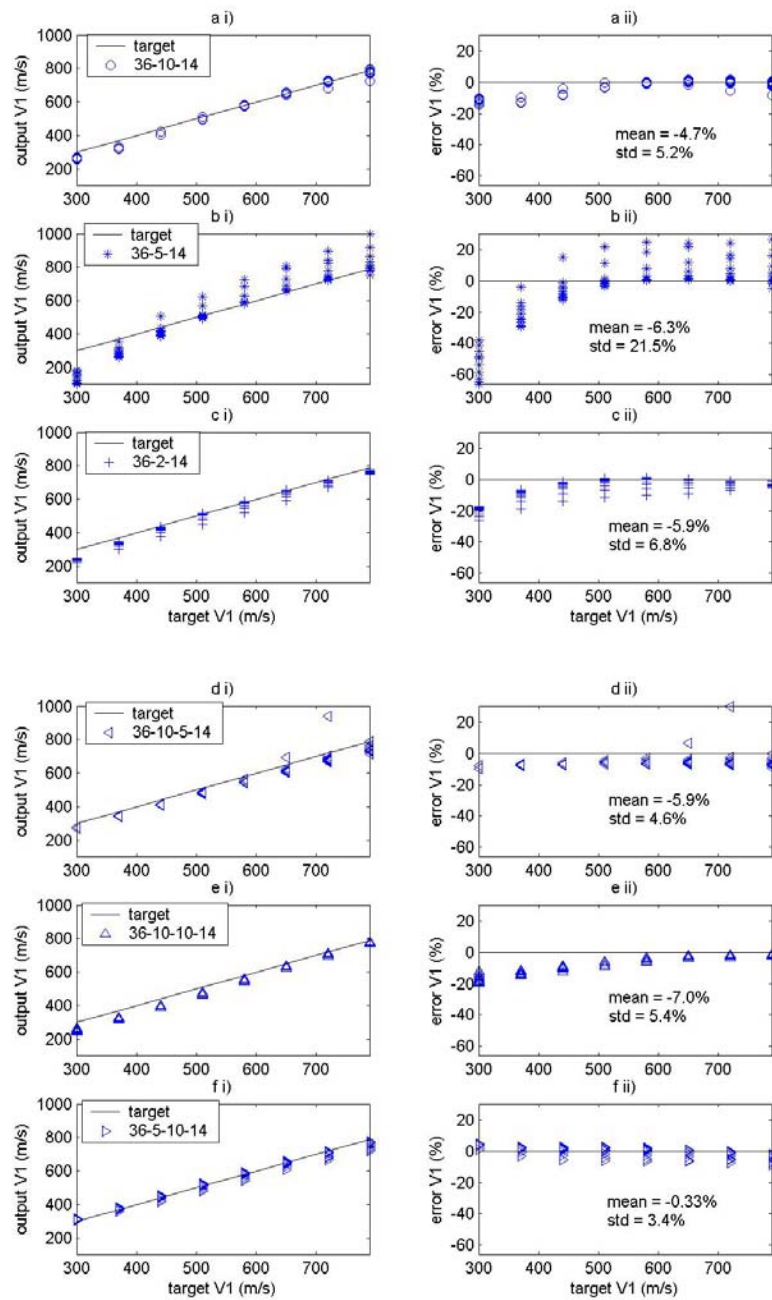


Figure B19 Predicted V_1 of Testing data 2 normalized by testing data sets for travel time velocity networks

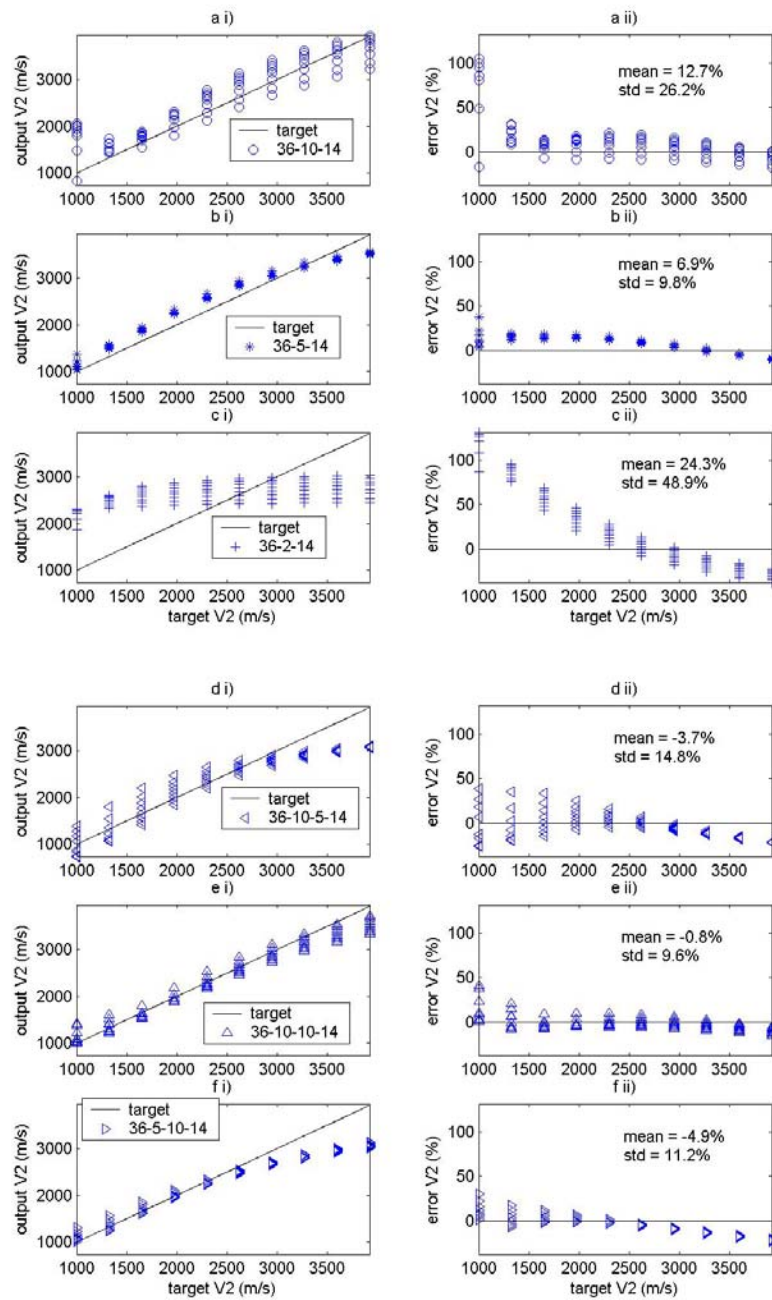


Figure B20 Predicted V_2 of Testing data 2 normalized by testing data sets for travel time velocity networks

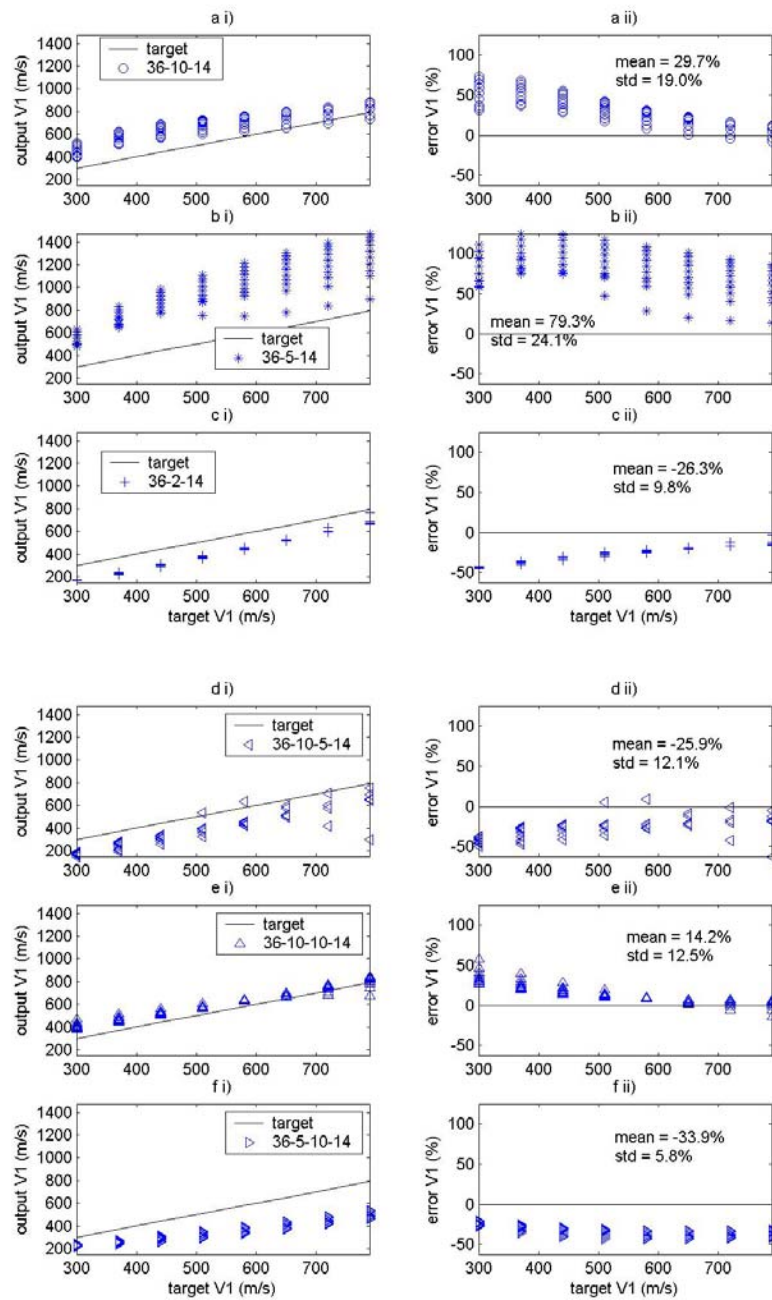


Figure B21 Predicted V_1 of Testing data 2 normalized by training data sets for travel time velocity networks

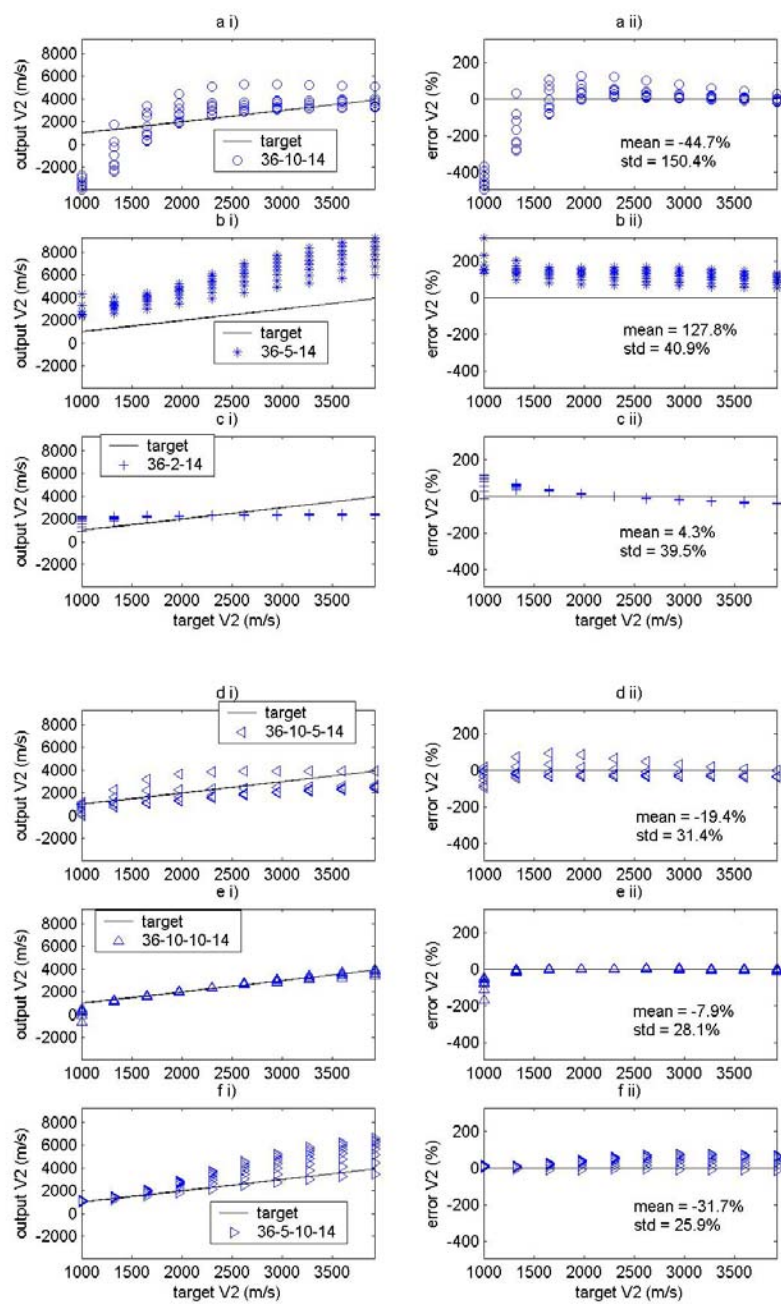


Figure B22 Predicted V_2 of Testing data 2 normalized by training data sets for travel time velocity networks

Estimated depth test of depth networks for t_{minus} - t_{plus} inputs

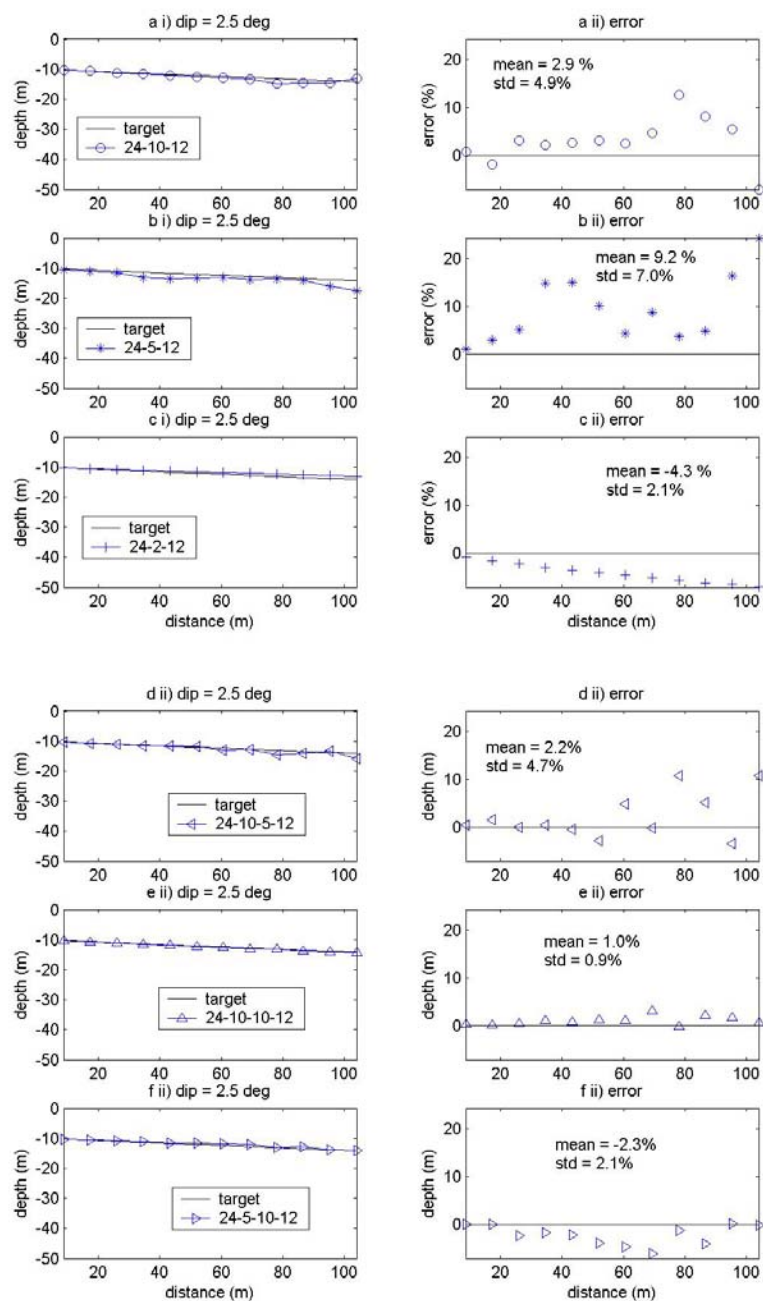


Figure B23 Predicted depth of 2.5 degree of dipping angle of trained depth networks for t_{minus} - t_{plus} inputs

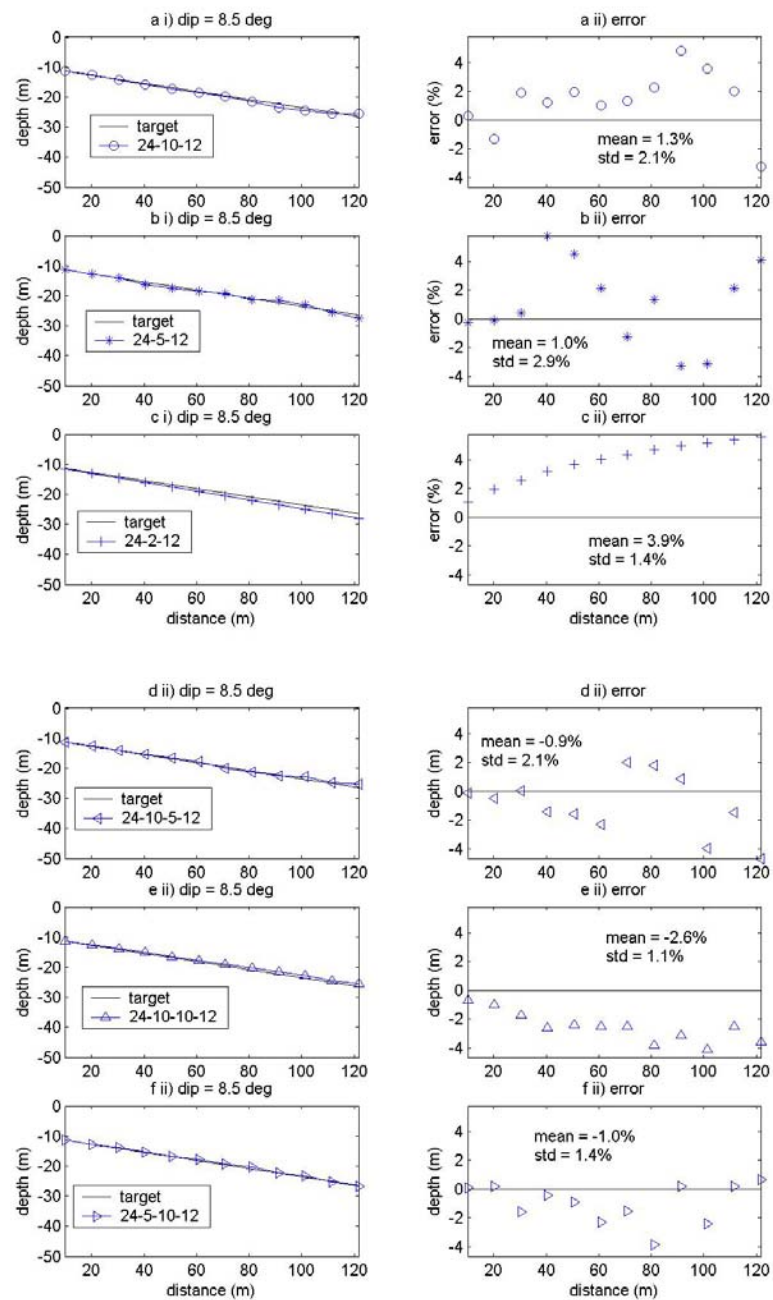


Figure B24 Predicted depth of 8.5 degree of dipping angle of trained depth networks for $t_{\text{minus}}-t_{\text{plus}}$ inputs

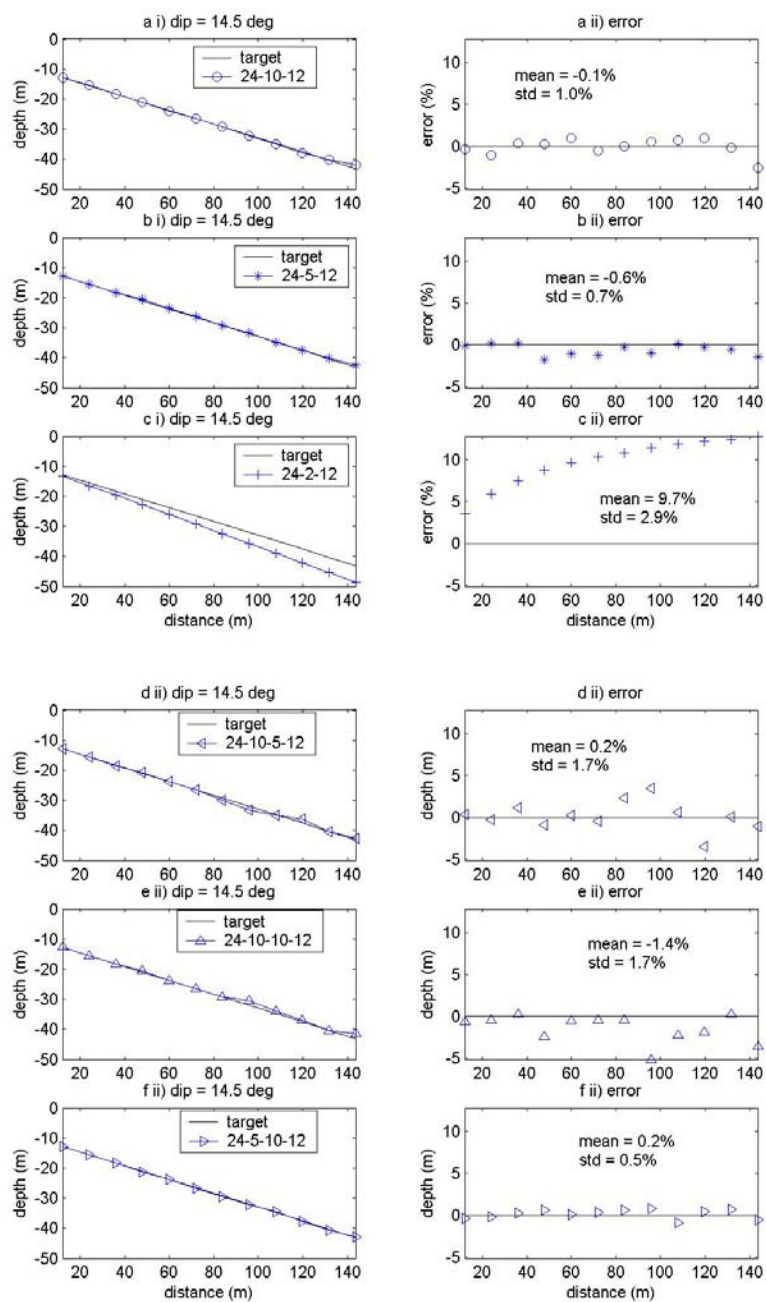


Figure B25 Predicted depth of 14.5 degree of dipping angle of trained depth networks for $t_{\text{minus}}-t_{\text{plus}}$ inputs

Estimated depth test of depth networks for travel time inputs

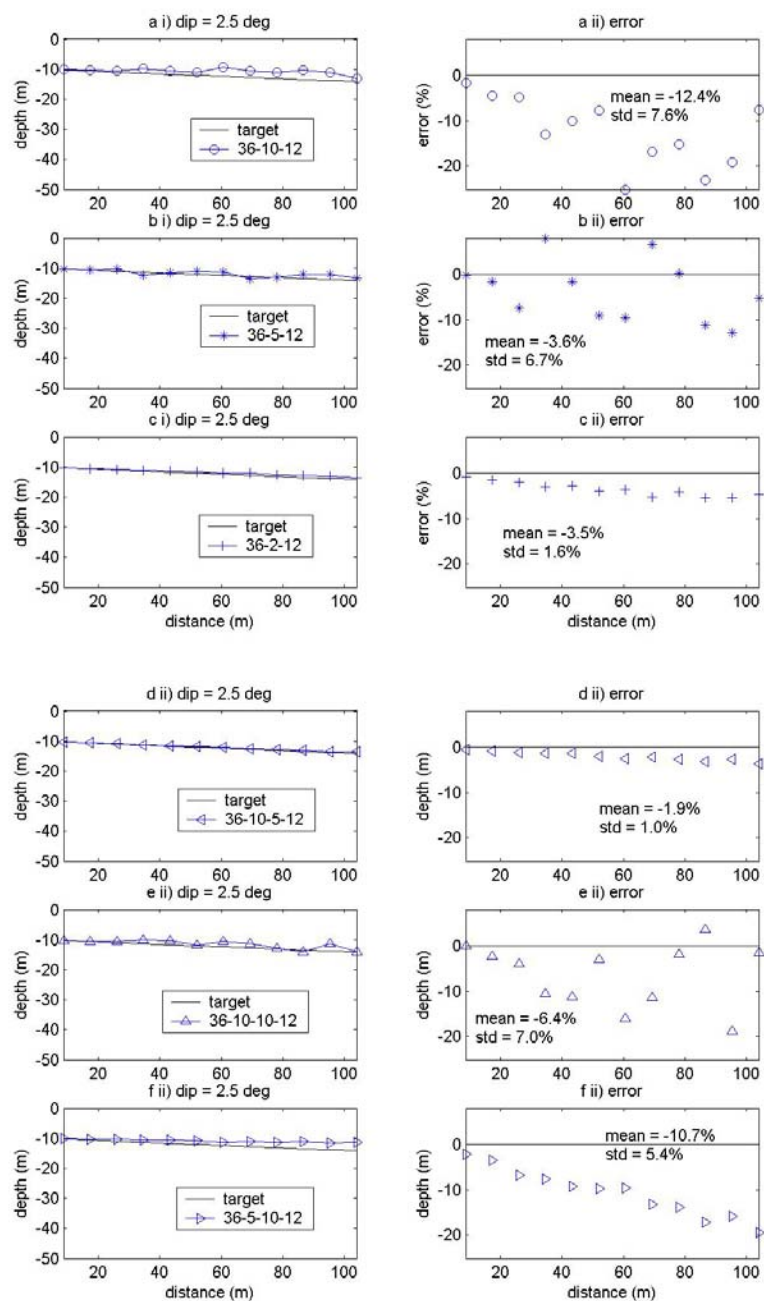


Figure B26 Predicted depth of 2.5 degree of dipping angle of trained depth networks for travel time inputs

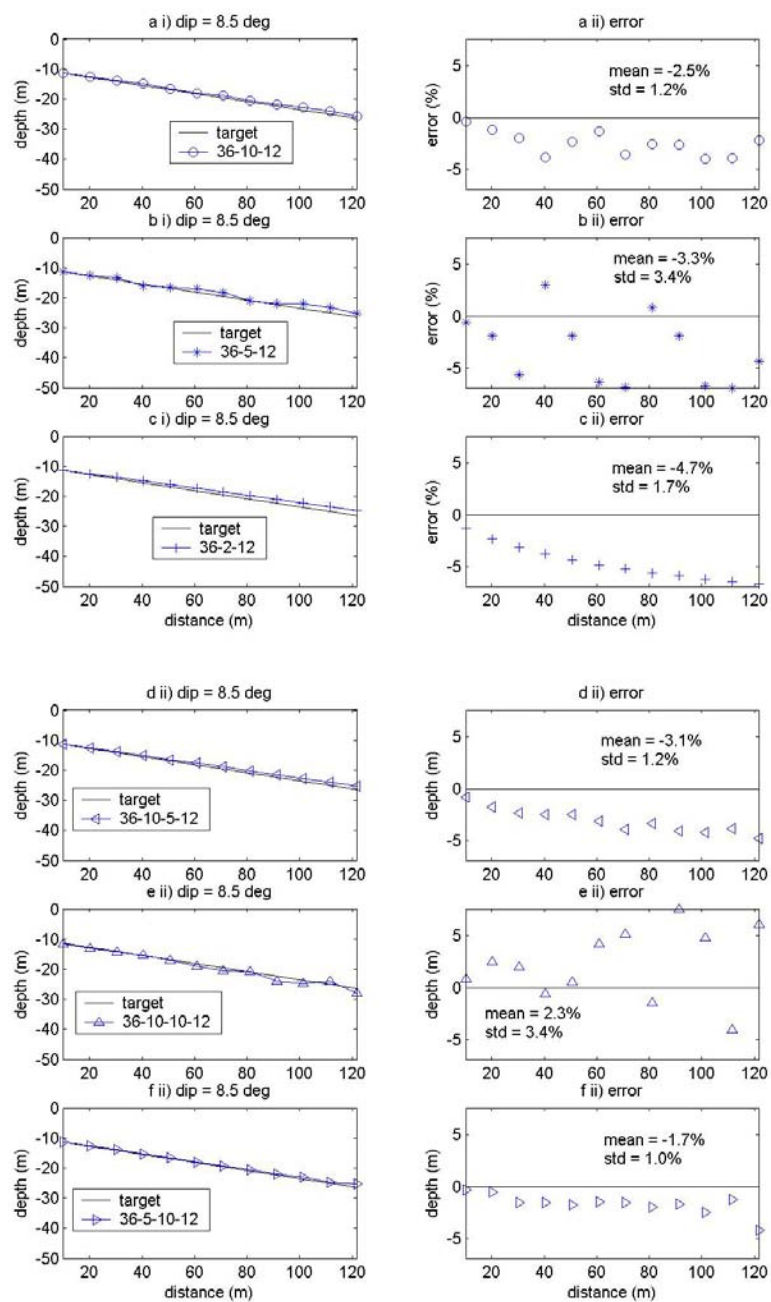


Figure B27 Predicted depth of 8.5 degree of dipping angle of trained depth networks for travel time inputs

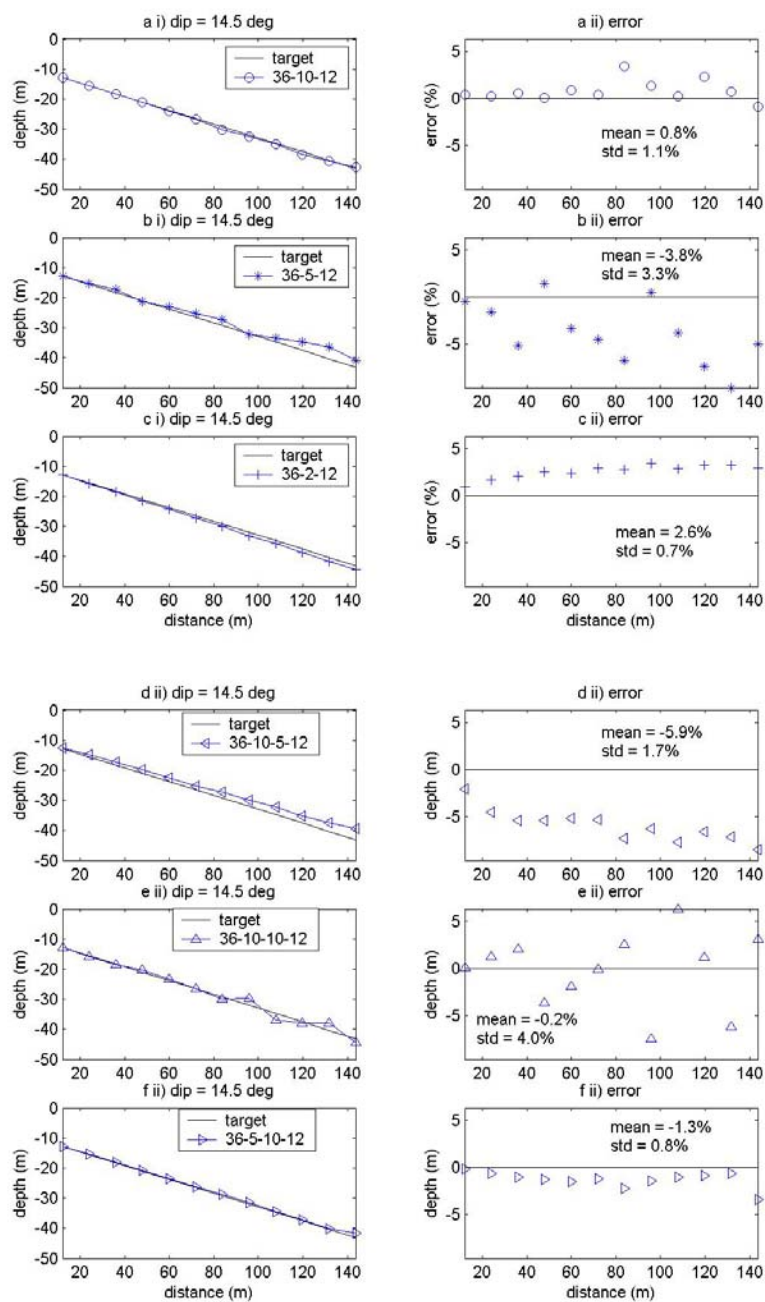


Figure B28 Predicted depth of 14.5 degree of dipping angle of trained depth networks for travel time inputs

Estimated velocity test of velocity networks for $t_{\text{minus}}-t_{\text{plus}}$ inputs

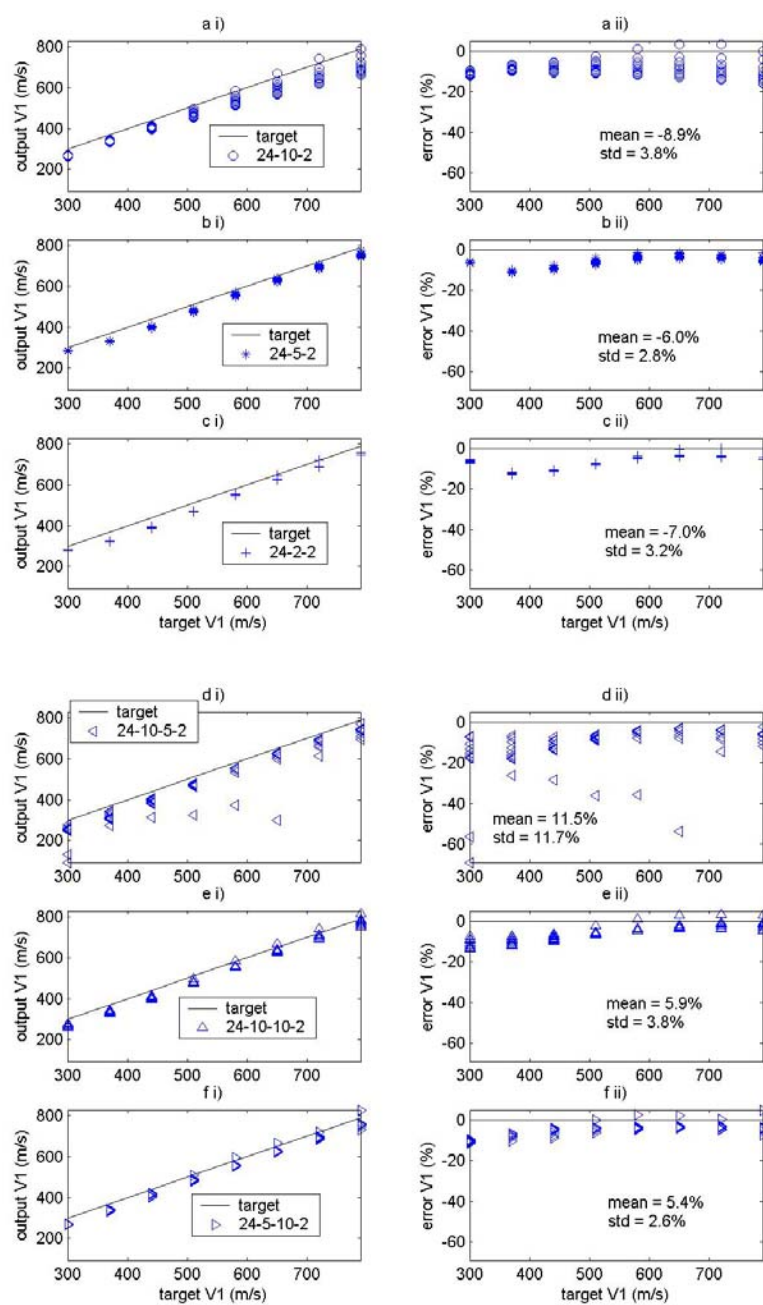


Figure B29 Predicted V_1 of Testing data 1 normalized by testing data sets for $t_{\text{minus}}-t_{\text{plus}}$ velocity networks

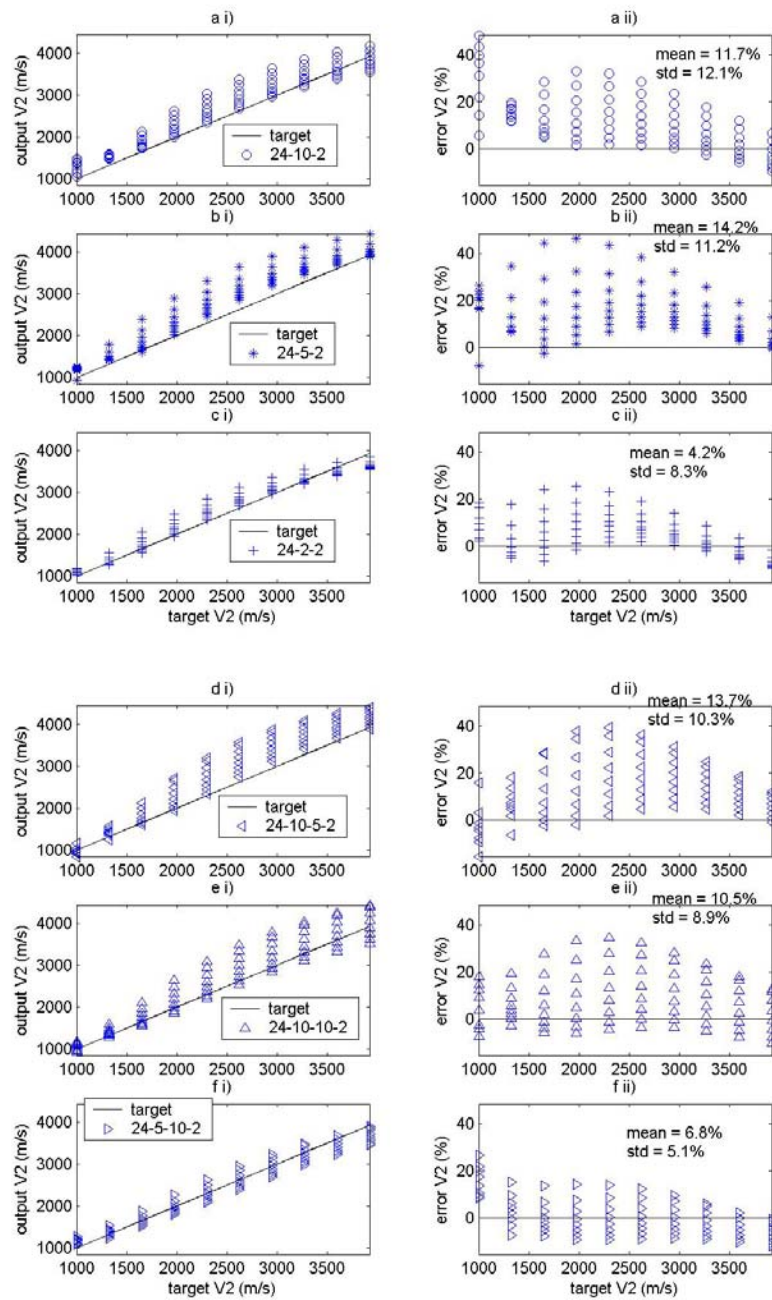


Figure B30 Predicted V_2 of Testing data 1 normalized by testing data sets for $t_{\text{minus}}-t_{\text{plus}}$ velocity networks

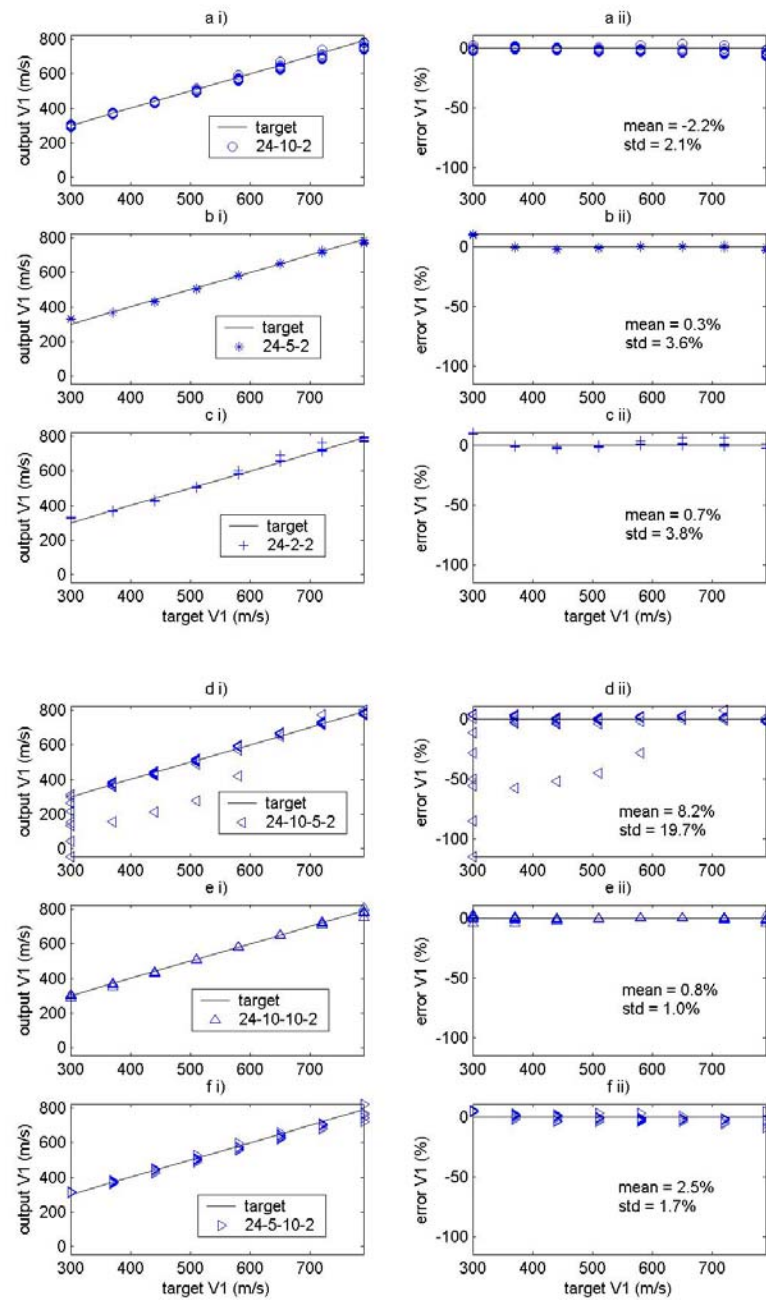


Figure B31 Predicted V_1 of Testing data 1 normalized by training data sets for $t_{\text{minus}}-t_{\text{plus}}$ velocity networks

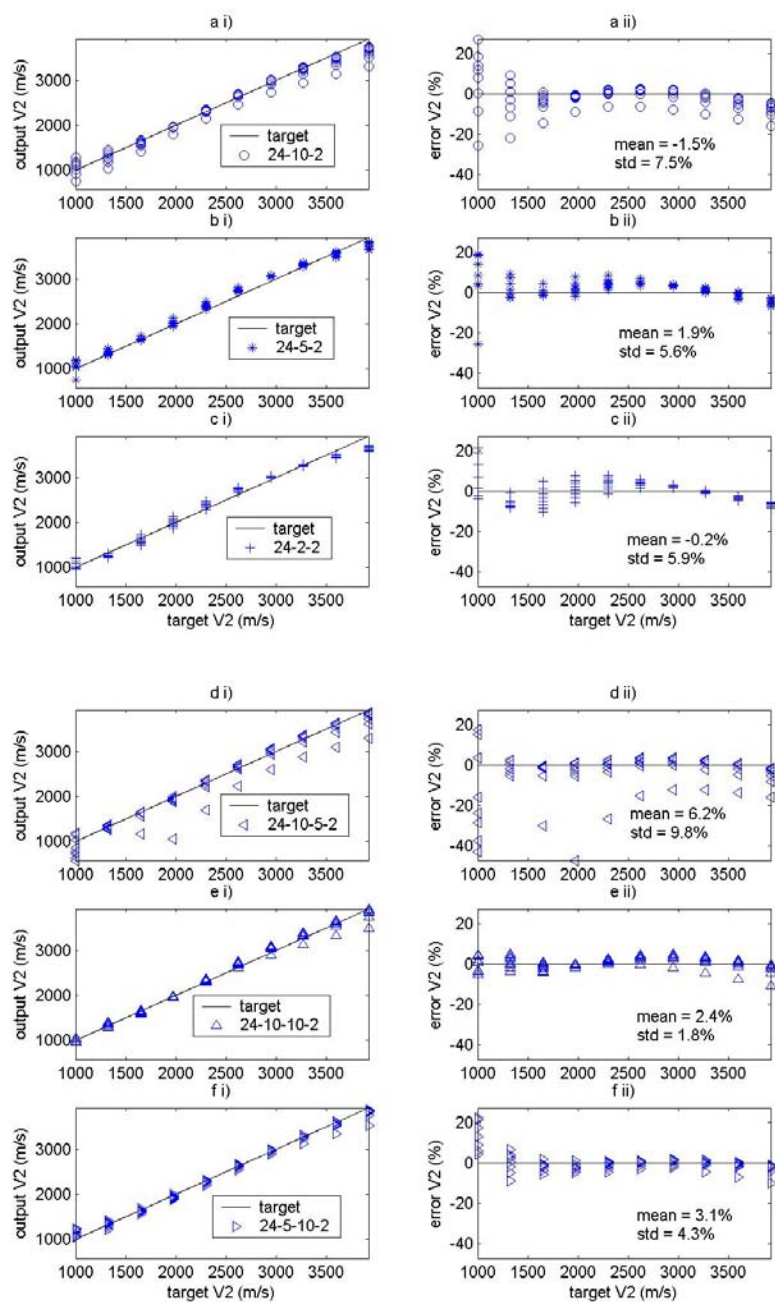


Figure B32 Predicted V_2 of Testing data 1 normalized by training data sets for $t_{\text{minus}}-t_{\text{plus}}$ velocity networks

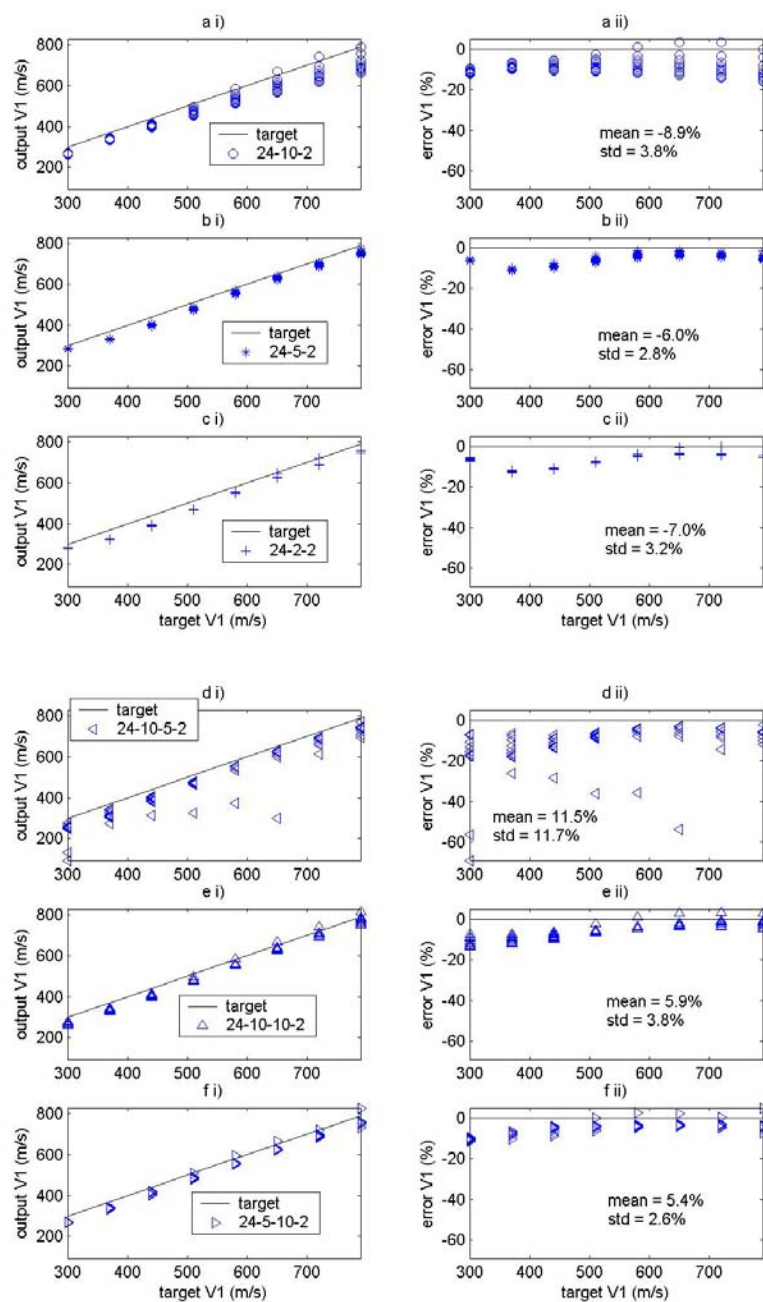


Figure B33 Predicted V_1 of Testing data 2 normalized by testing data sets for $t_{\text{minus}}-t_{\text{plus}}$ velocity networks

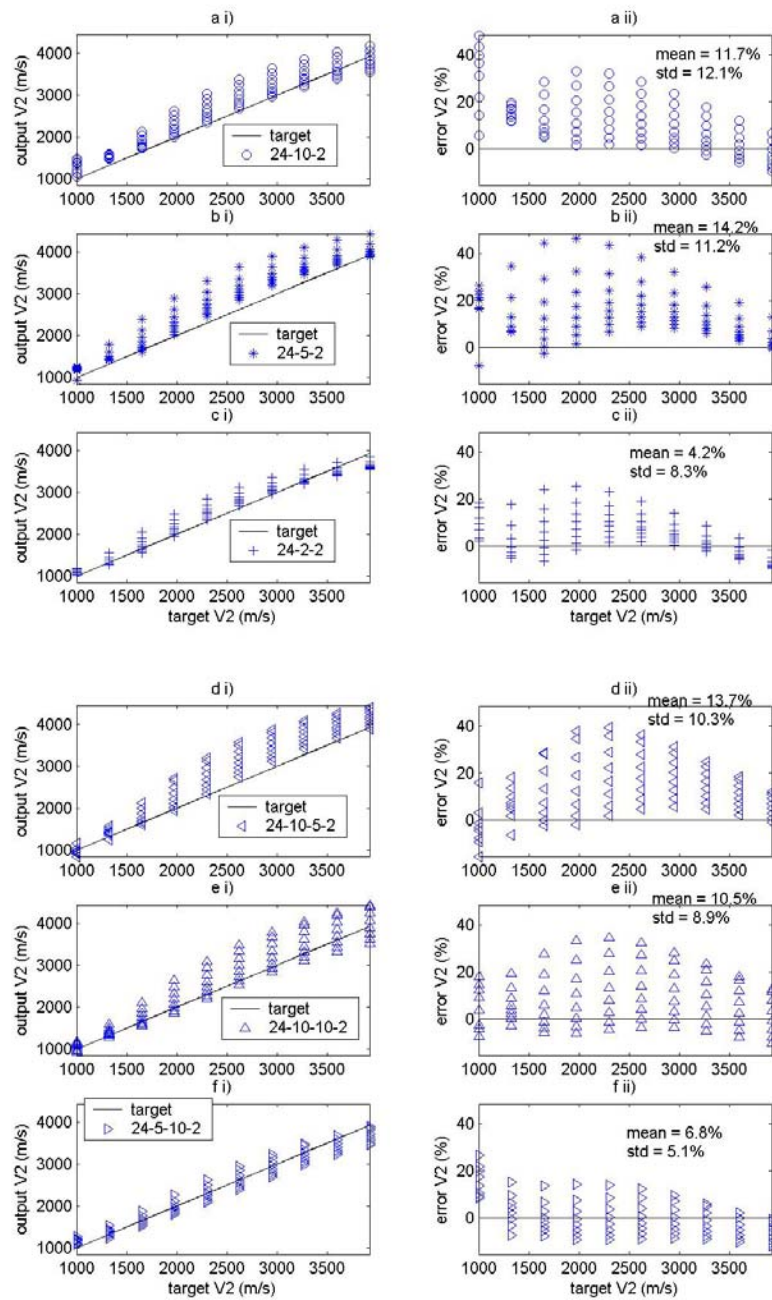


Figure B34 Predicted V_2 of Testing data 2 normalized by testing data sets for $t_{\text{minus}}-t_{\text{plus}}$ velocity networks

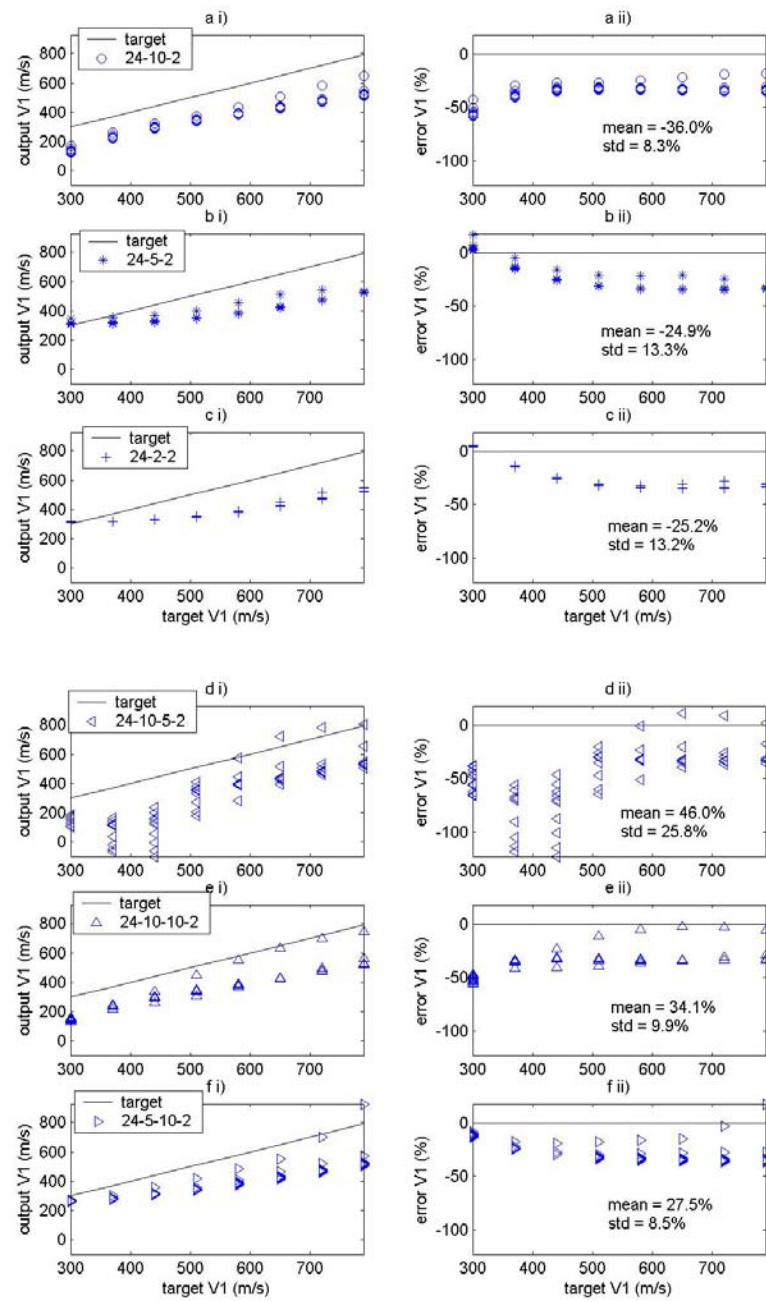


Figure B35 Predicted V_1 of Testing data 2 normalized by training data sets for $t_{\text{minus}}-t_{\text{plus}}$ velocity networks

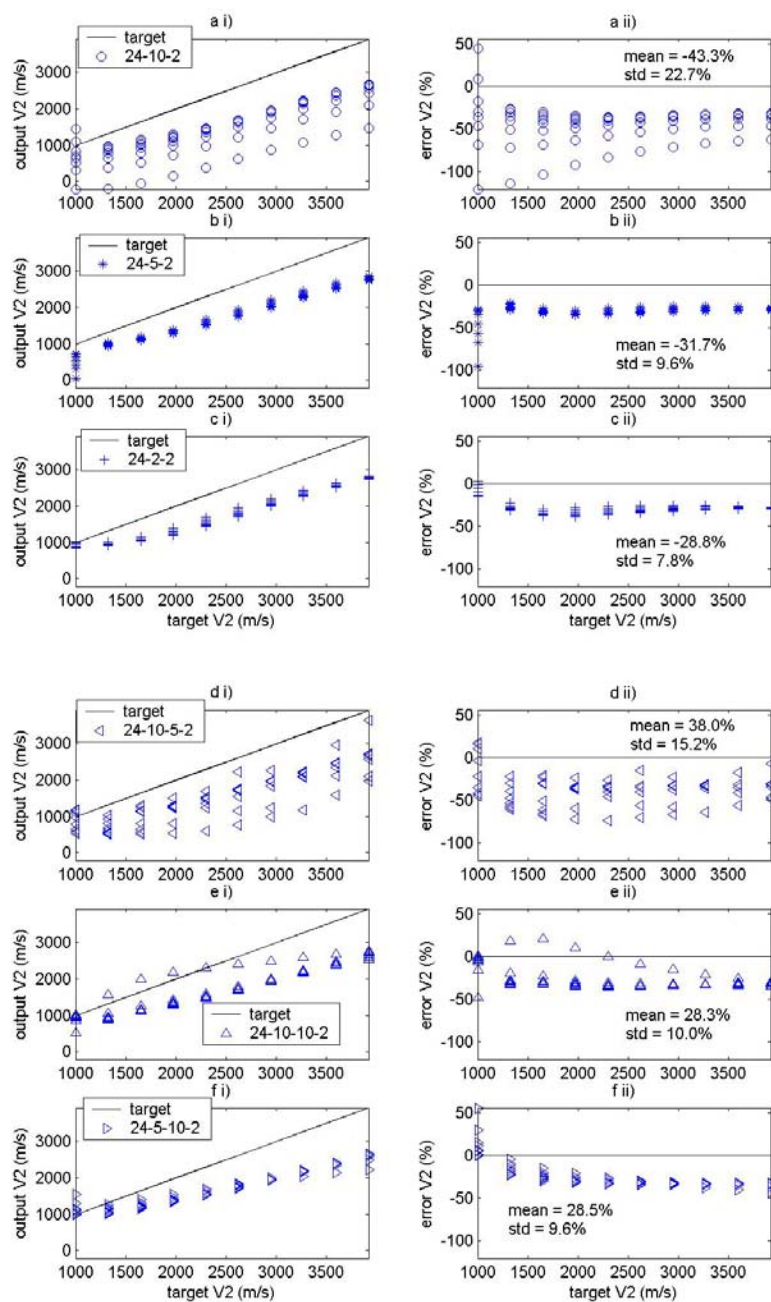


Figure B36 Predicted V_2 of Testing data 2 normalized by training data sets for $t_{\text{minus}}-t_{\text{plus}}$ velocity networks

Estimated velocity test of velocity networks for travel time inputs

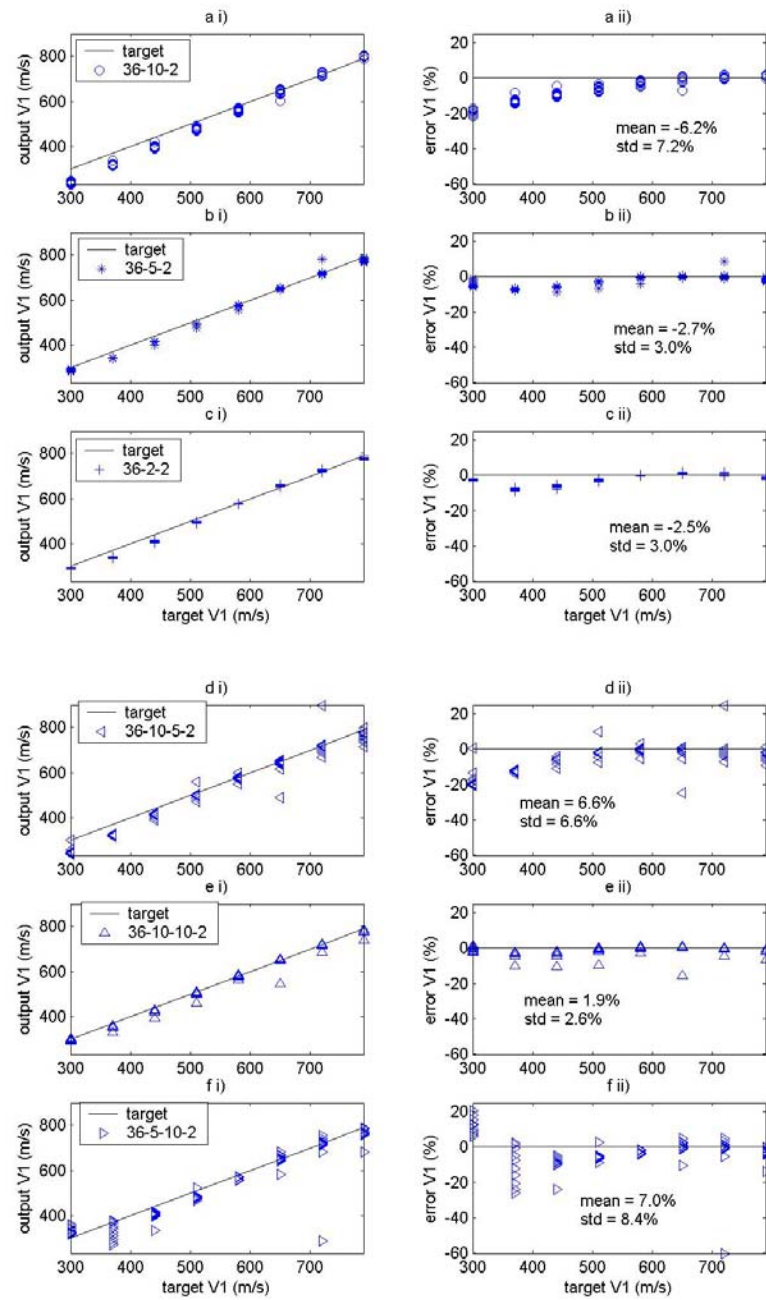


Figure B37 Predicted V_1 of Testing data 1 normalized by testing data sets for travel time velocity networks

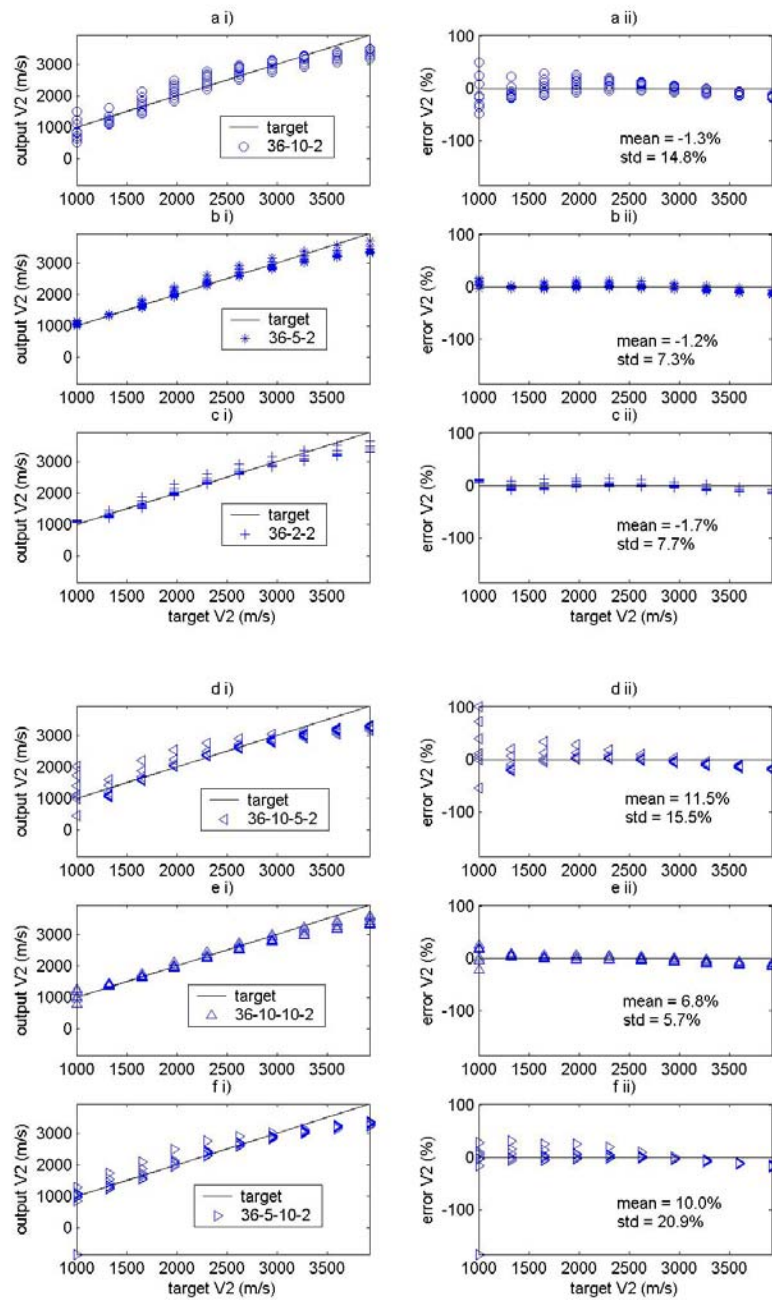


Figure B38 Predicted V_2 of Testing data 1 normalized by testing data sets for travel time velocity networks

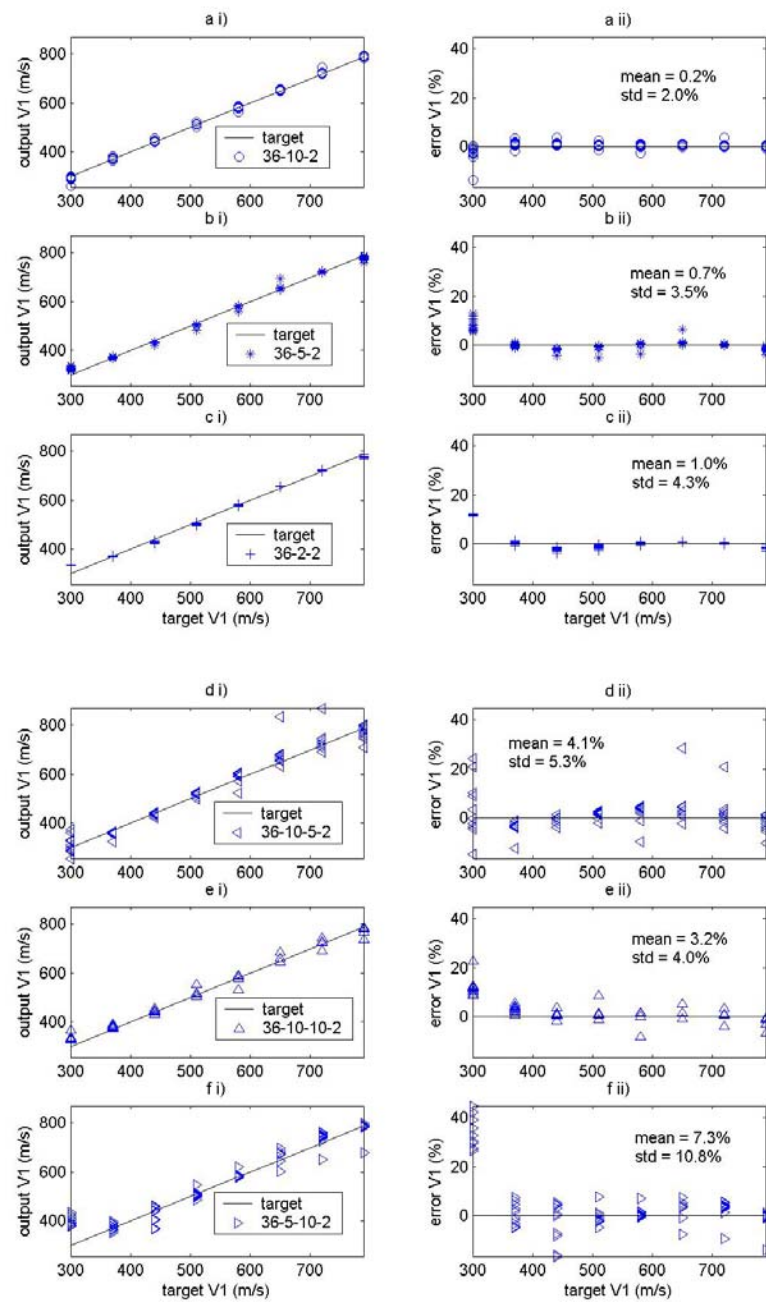


Figure B39 Predicted V_1 of Testing data 1 normalized by training data sets for travel time velocity networks

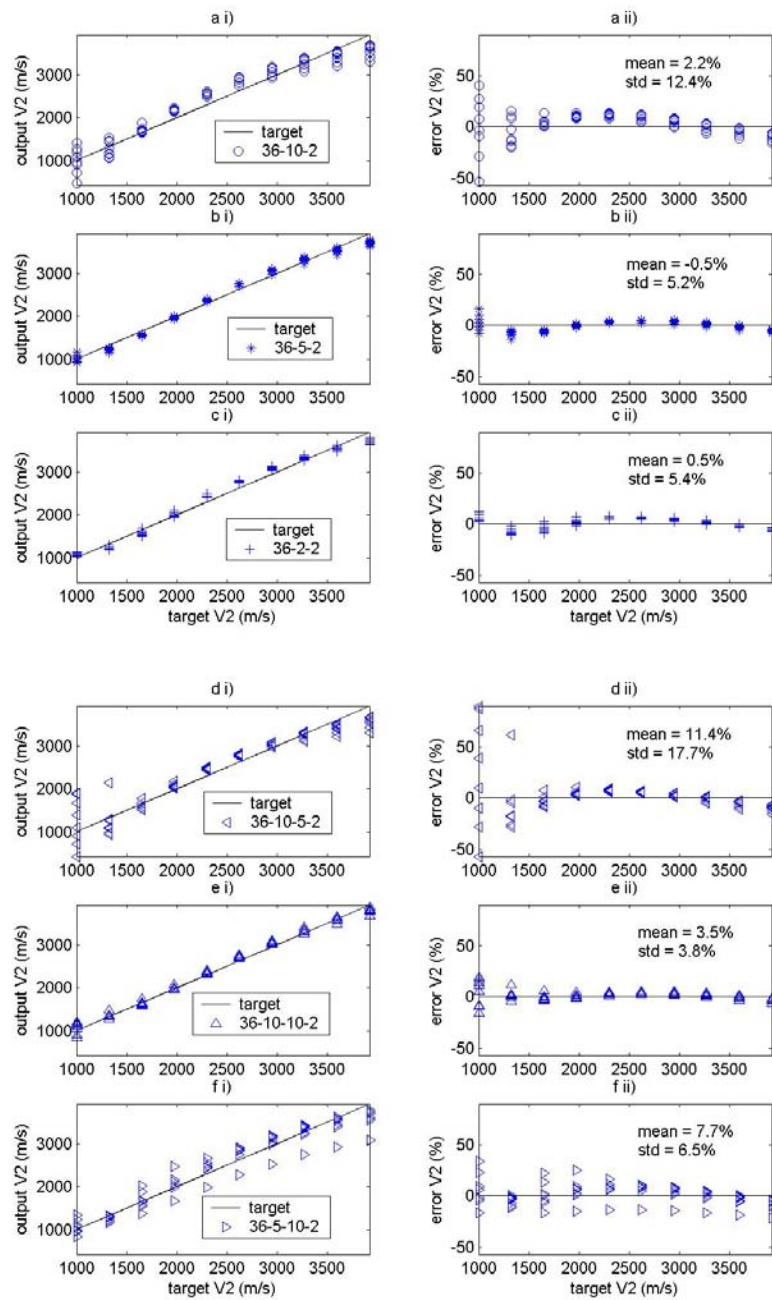


Figure B40 Predicted V_2 of Testing data 1 normalized by training data sets for travel time velocity networks

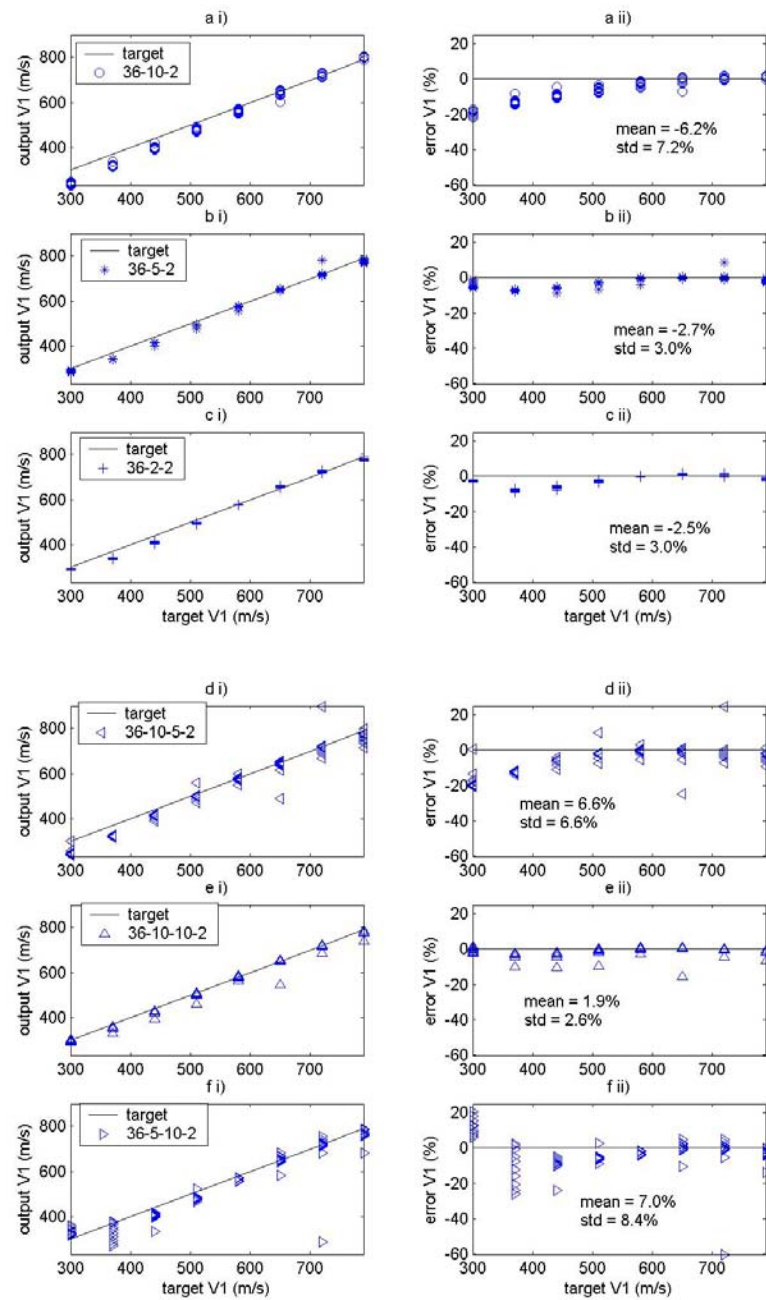


Figure B41 Predicted V_1 of Testing data 2 normalized by testing data sets for travel time velocity networks

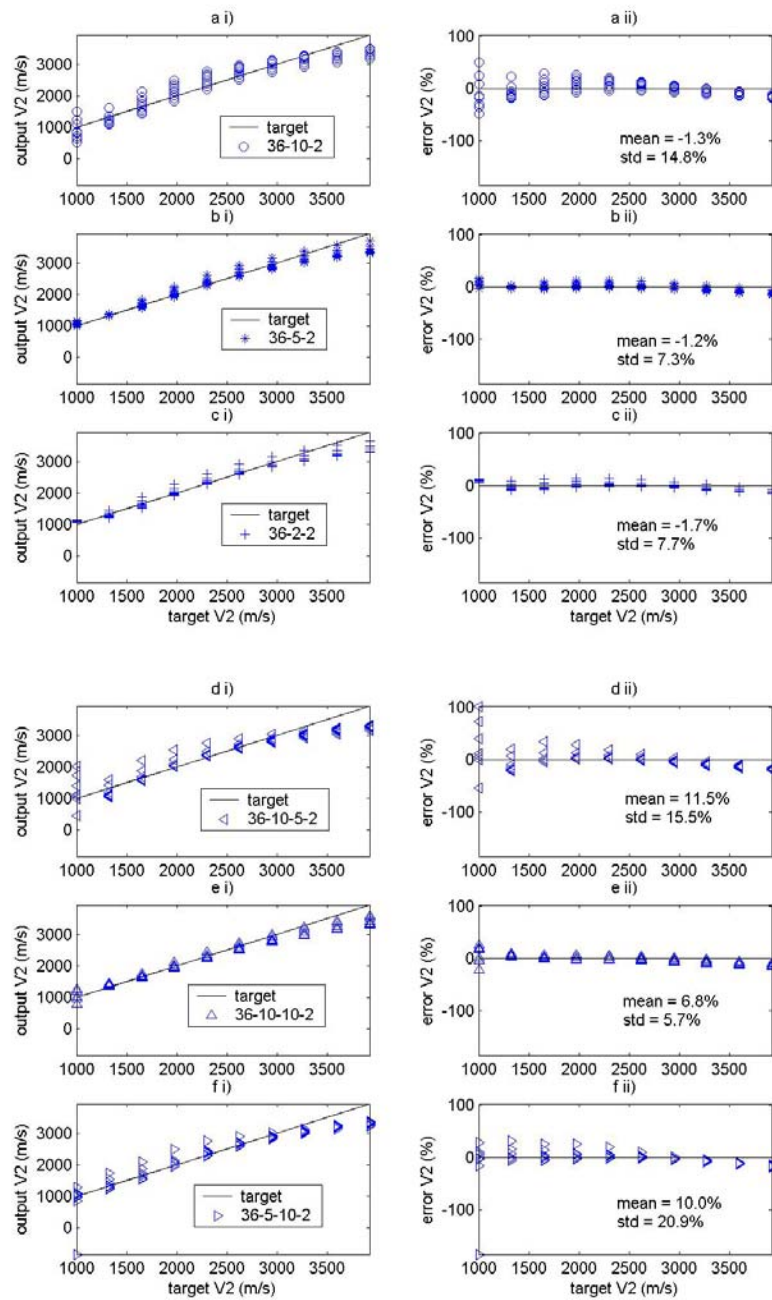


Figure B42 Predicted V_2 of Testing data 2 normalized by testing data sets for travel time velocity networks

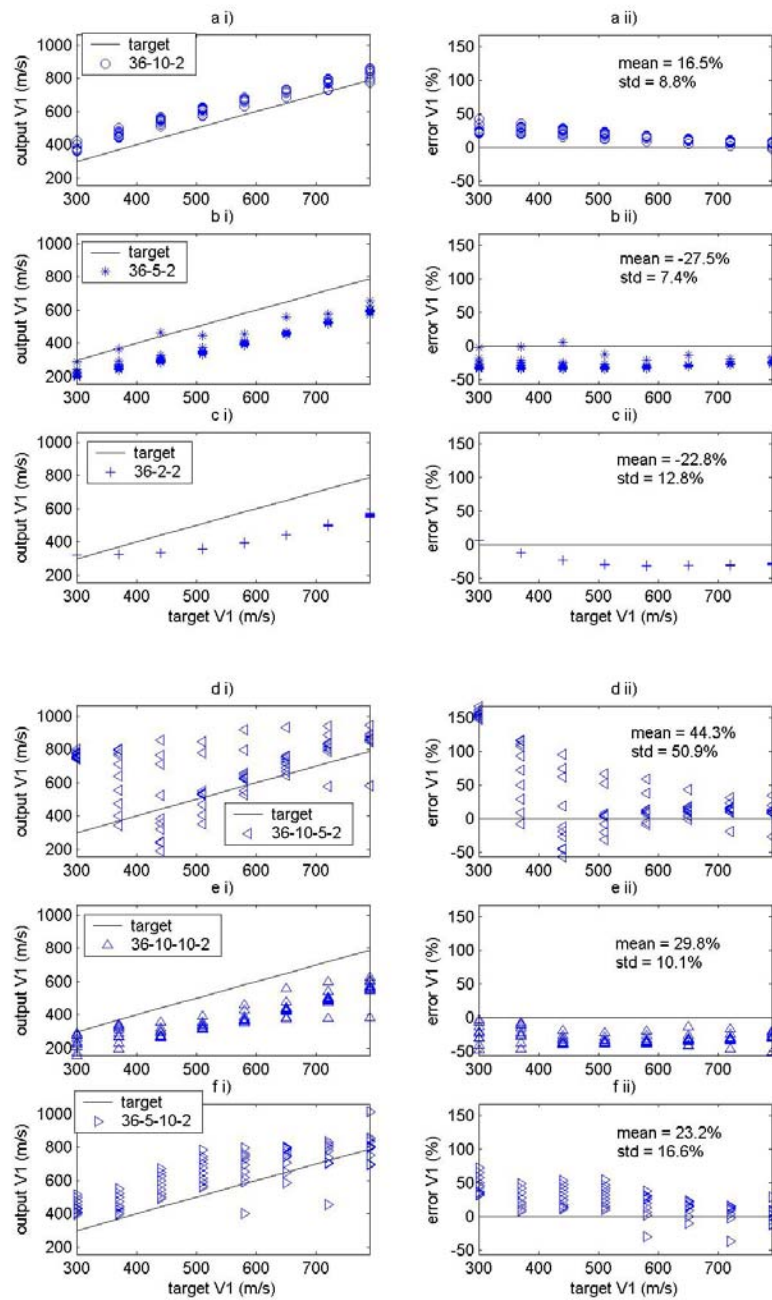


Figure B43 Predicted V_1 of Testing data 2 normalized by training data sets for travel time velocity networks

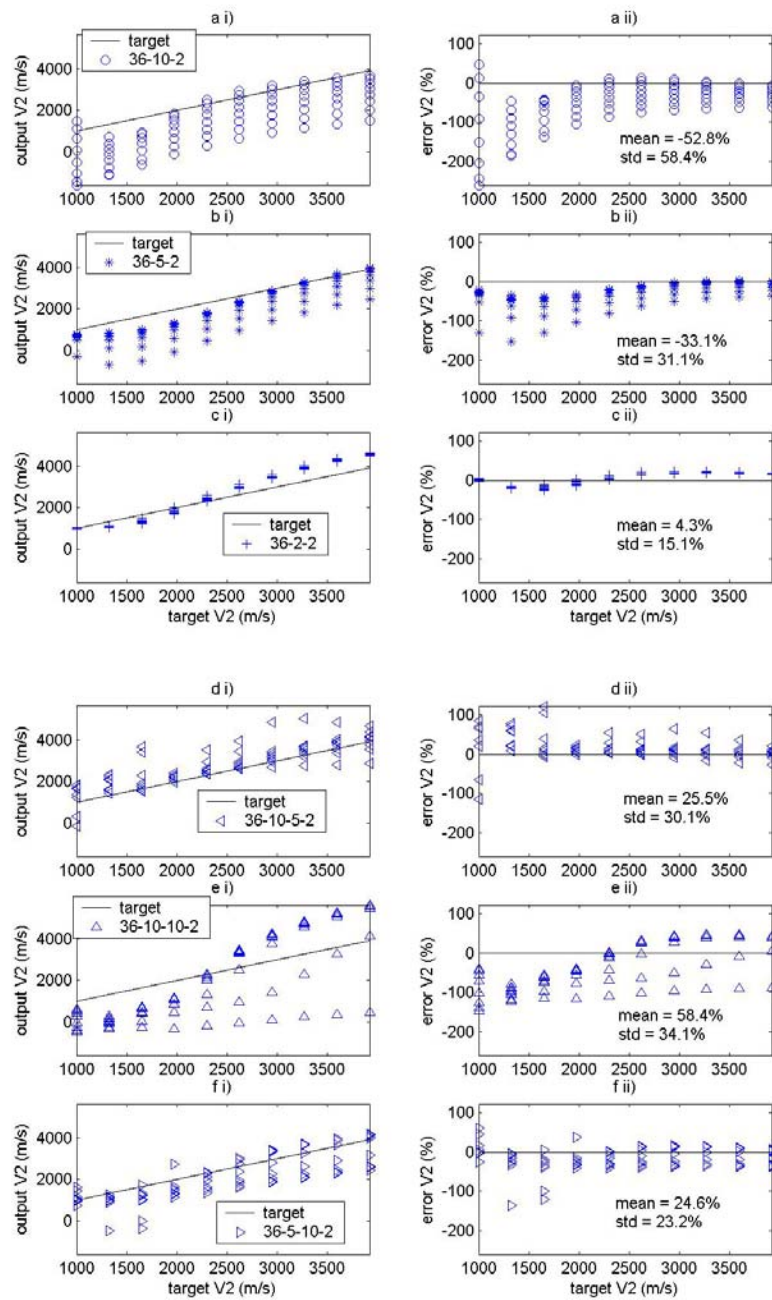


Figure B44 Predicted V_2 of Testing data 2 normalized by training data sets for travel time velocity networks