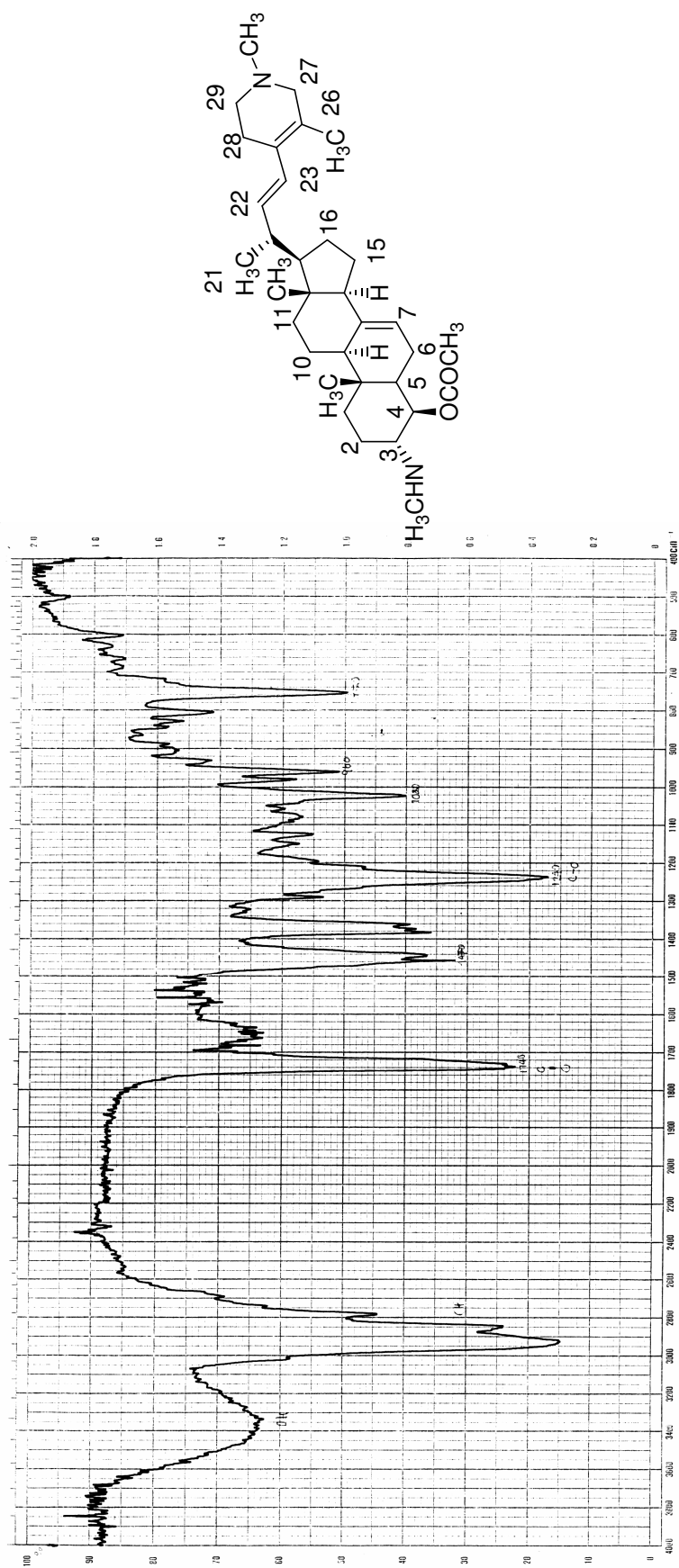
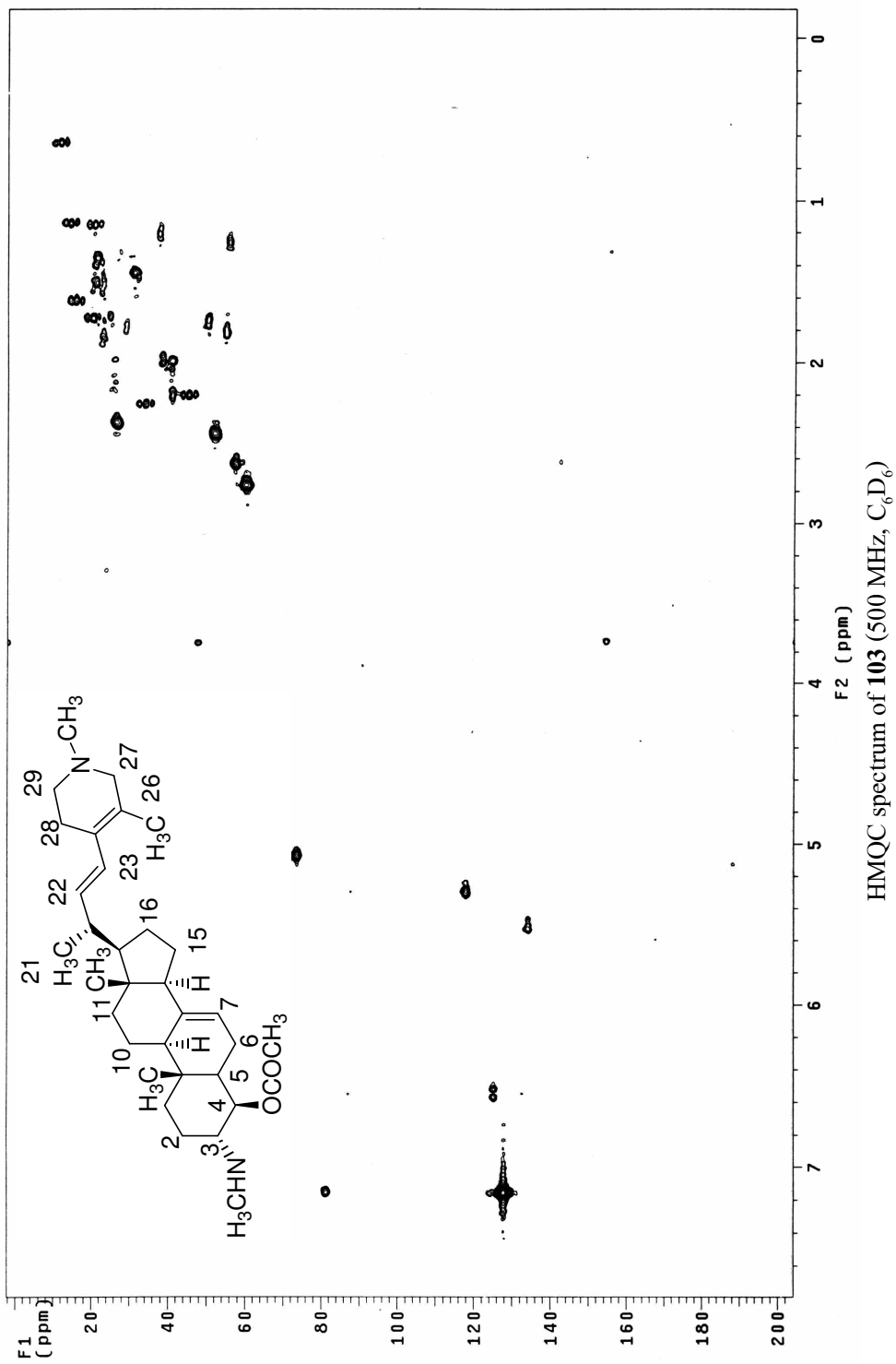
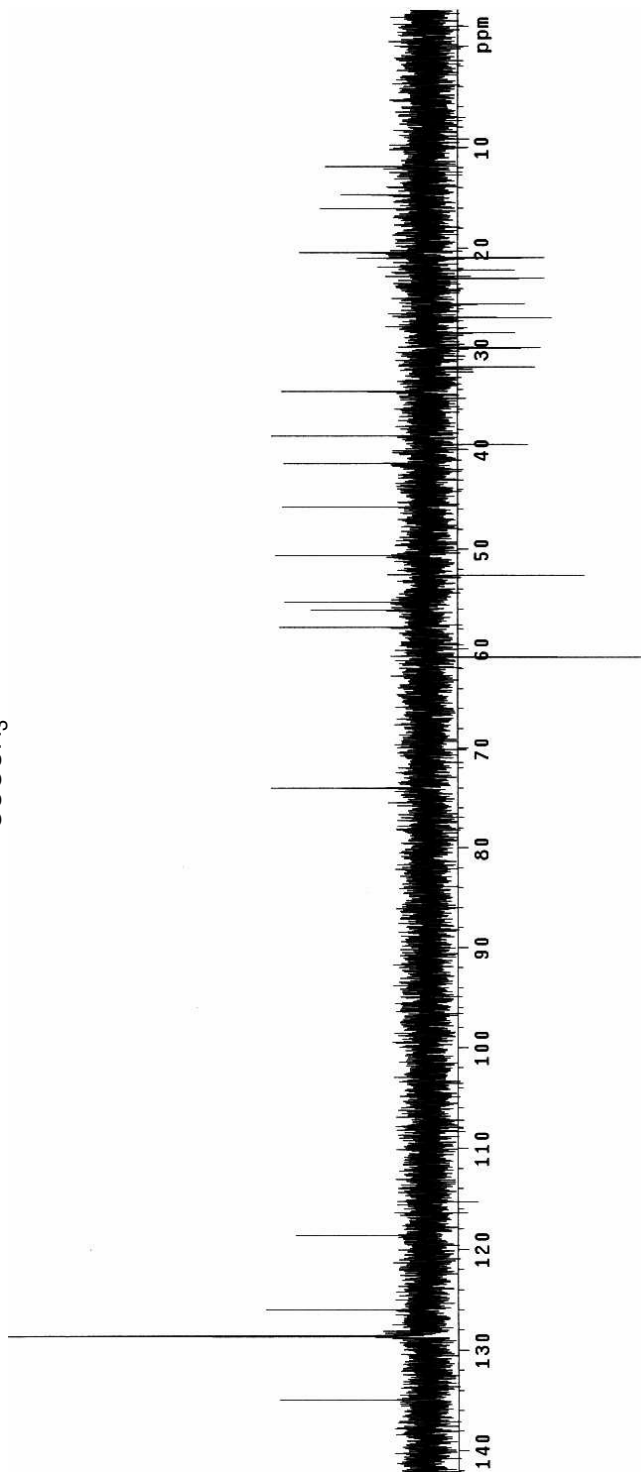
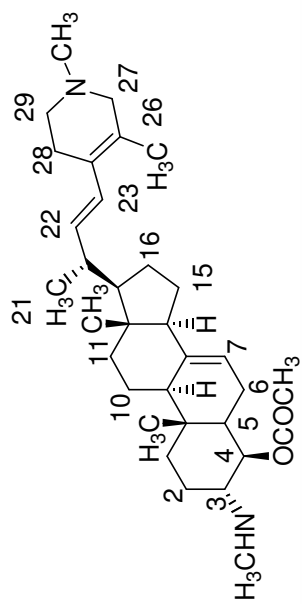


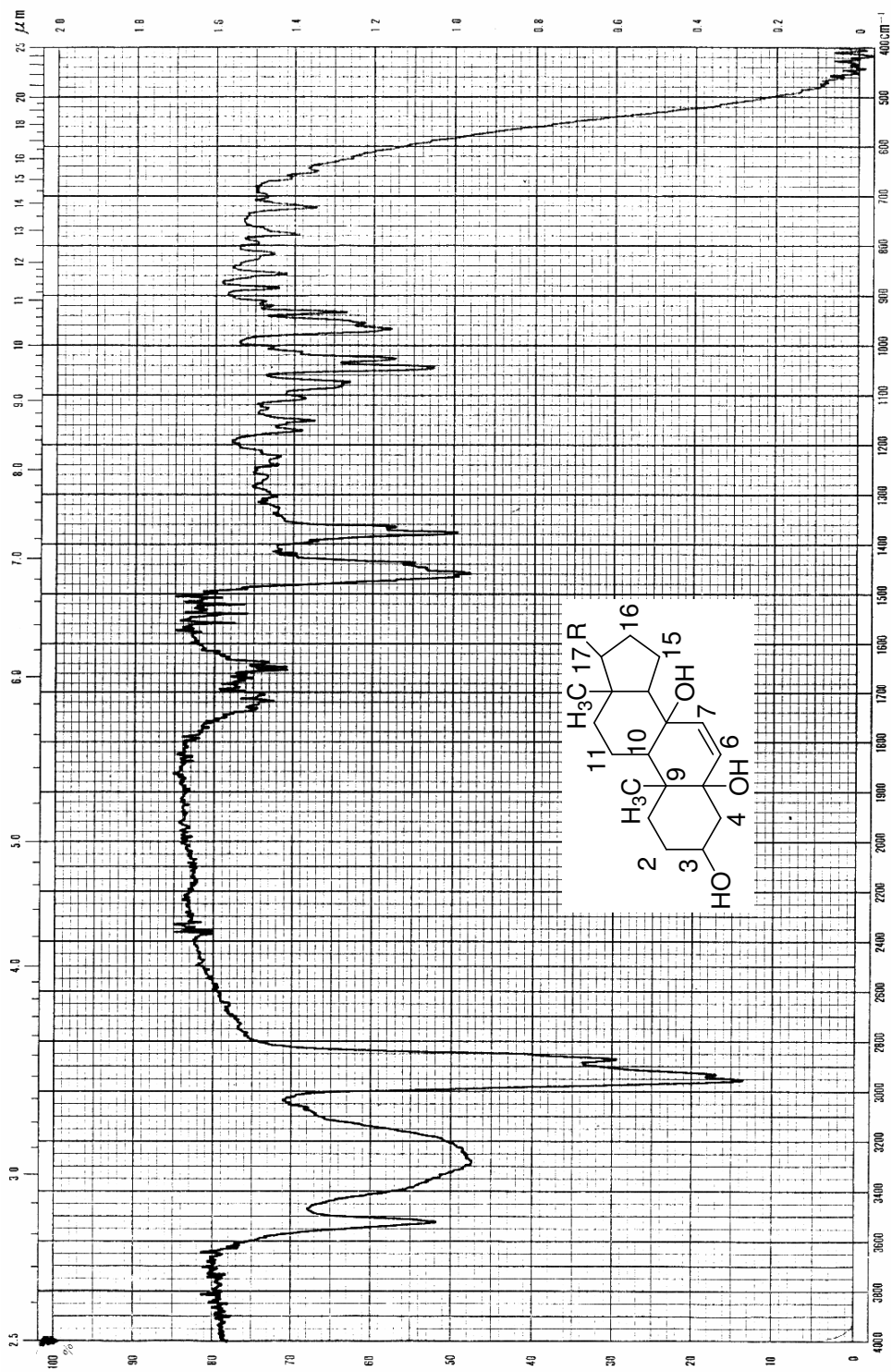
MS spectrum of 103



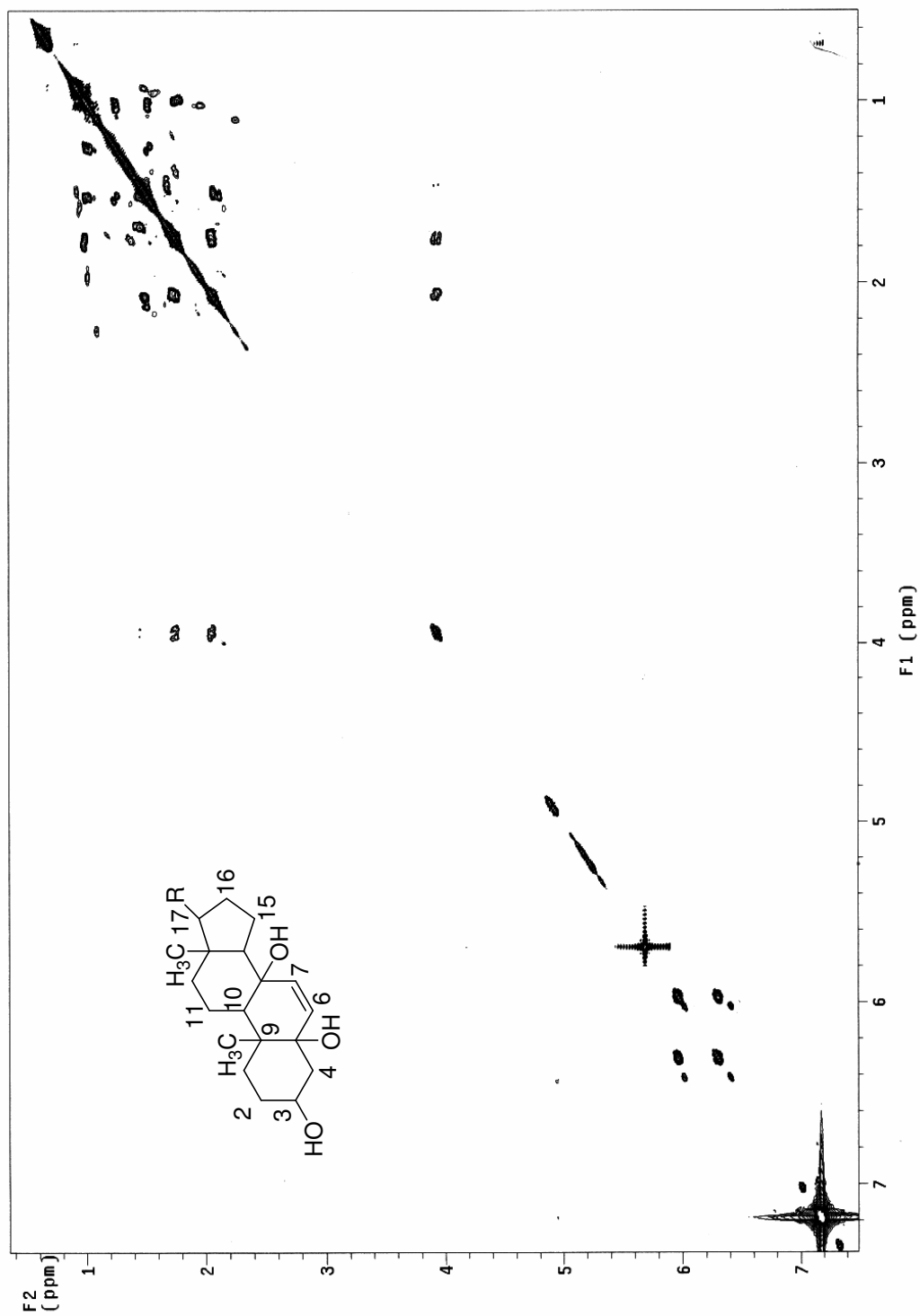
IR spectrum of 103

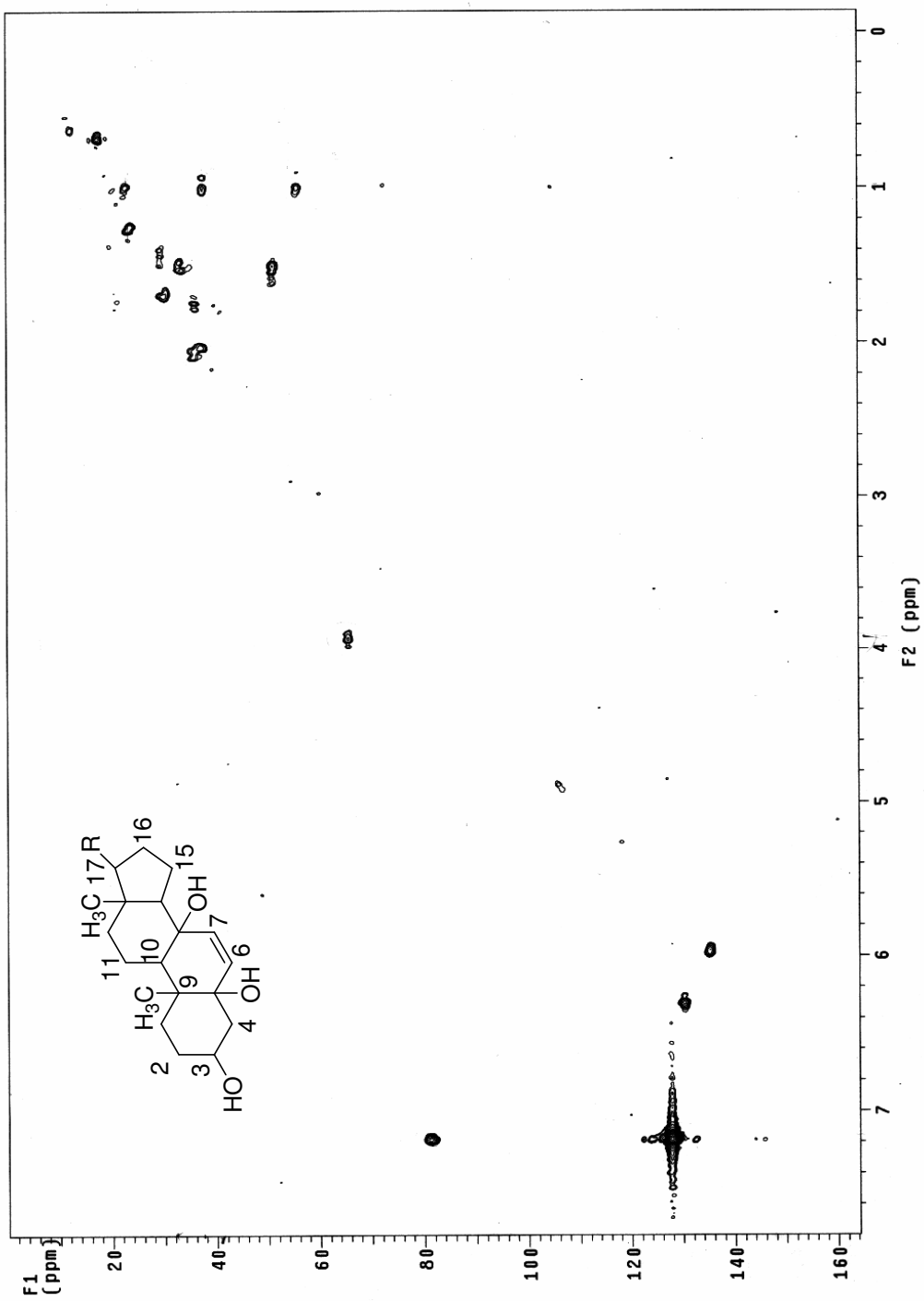


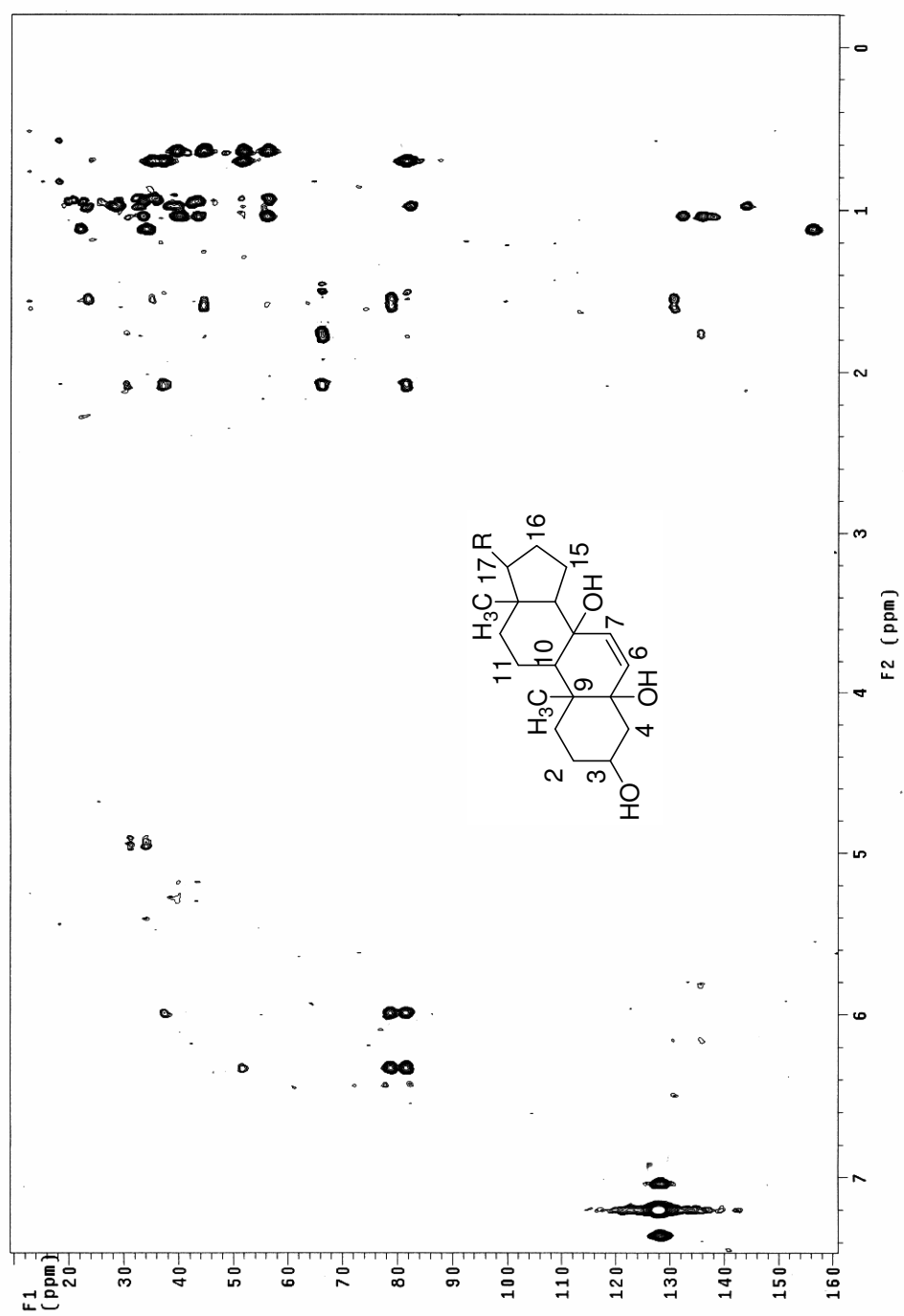
DEPT 135 spectrum of **103** (125 MHz, C_6D_6)



IR spectrum of 102

COSY spectrum of **102** (500 MHz, C_6D_6O)

HMOC spectrum of **102** (500 MHz, C_6D_6)

HMBC spectrum of **102** (500 MHz, C_6D_6)