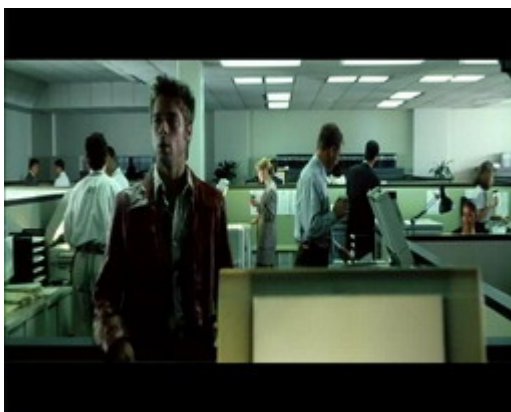


Appendices

Appendix A

Subliminal scenes indicate the emergence of the narrator's dark side.

1.¹

2.



3.



4.

¹ Picture 1-4 taken from “**Fight Club- Subliminal Messages**” n.d. In The Easter Egg Archive (Online). Available : <http://www.eggs.com/items/3312.html>

Appendix B

The narrator's jealousy of Mister Angel.



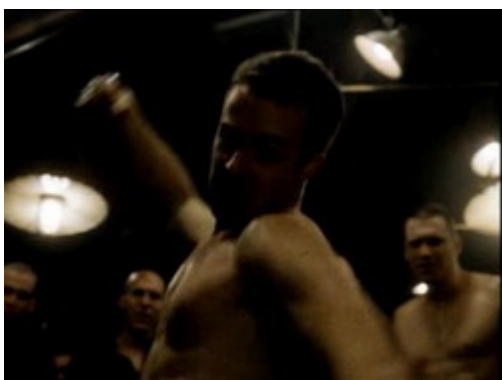
5.



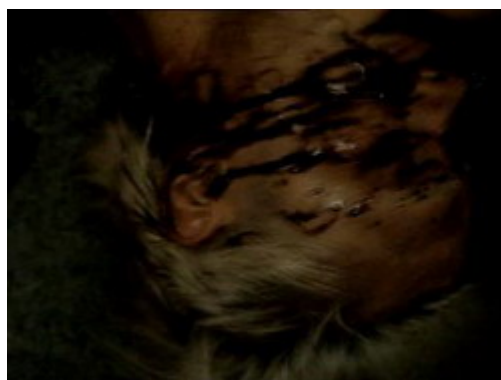
6.



7.



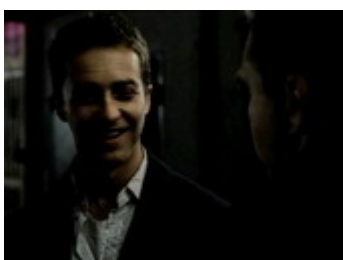
8.



9.

Appendix C

The narrator's jealousy with Tyler.



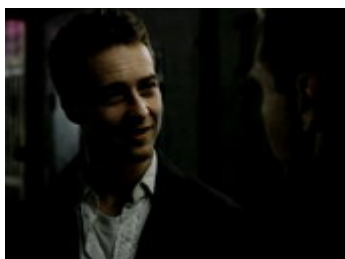
10.



11.



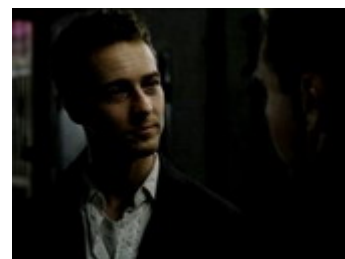
12.



13.



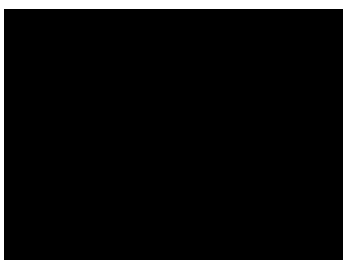
14.



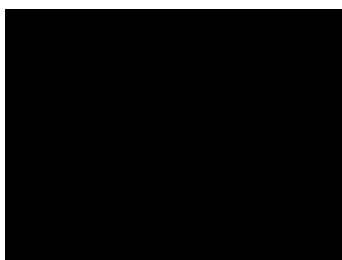
15.

Appendix D

Frequent use of elliptical editing to demonstrate the narrator's dark side and himself.



16.



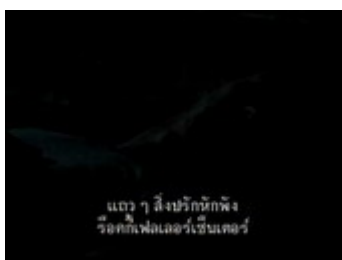
17.



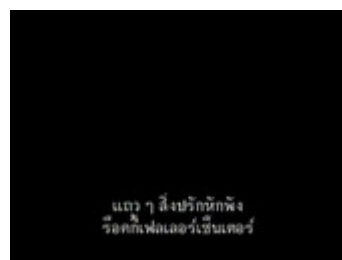
18.



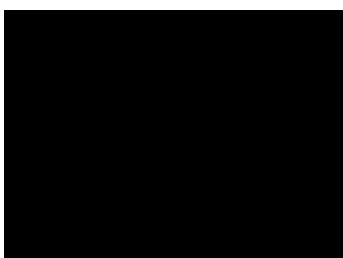
19



20



21



22.



23.



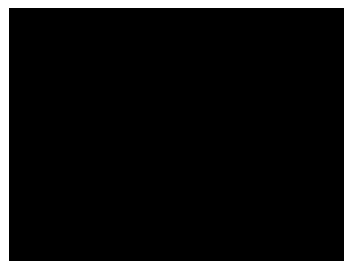
24.



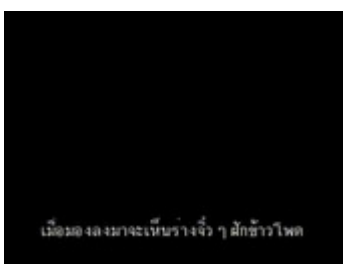
25.



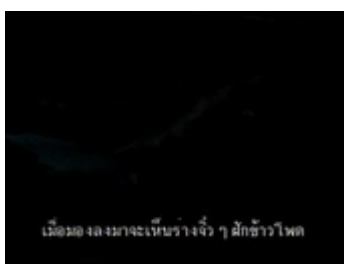
26.



27.



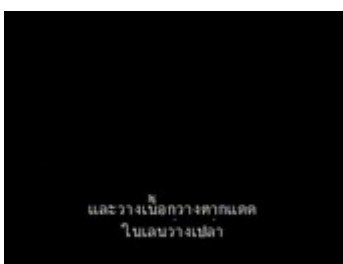
28.



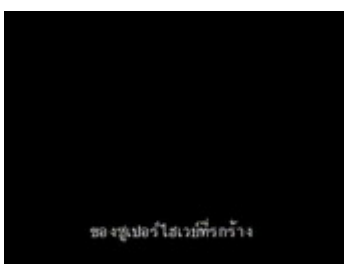
29.



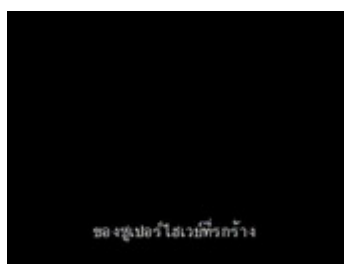
30.



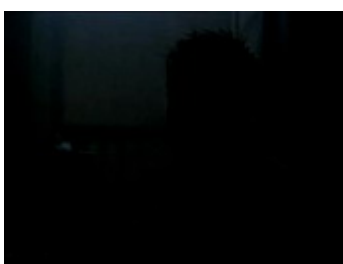
31.



32.



33.



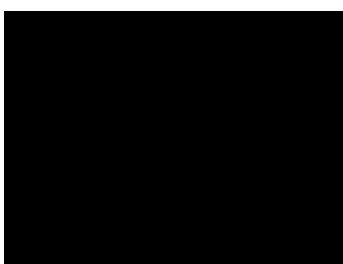
34.



35.



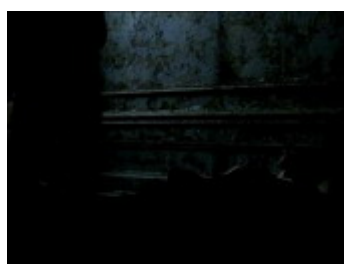
36.



37.



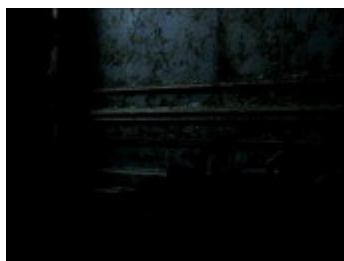
38.



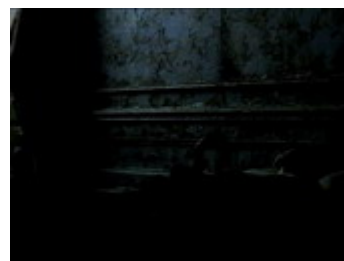
39.



40.



41.



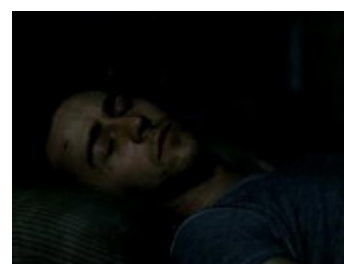
42.



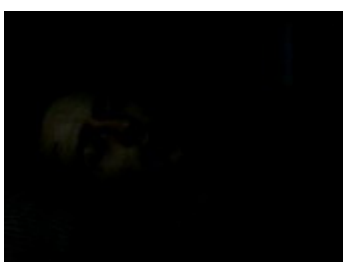
43.



44.



45.



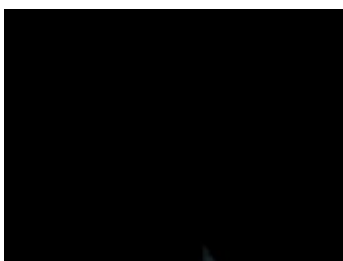
46.



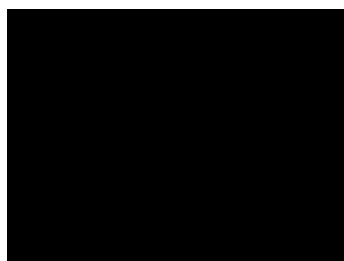
47.



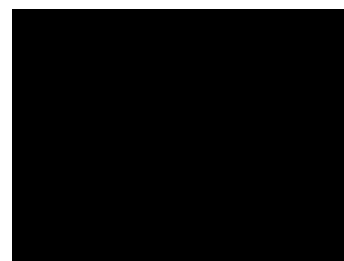
48.



49.



50.



51.

Appendix E

Zoom-in revealing the narrator's shocking as the mystery exposed (one of fight club members tells him that he is Tyler Durden.)



52.



53.



54.



55.



56.



57.



58.



59.



60.



61.

Appendix F

Gradual zoom-in at Marla gives the intense feeling to both the narrator and the audience as she is the second one to assure that he is Tyler Durden.



62.



63.



64.



65.



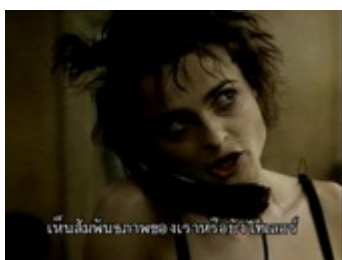
66.



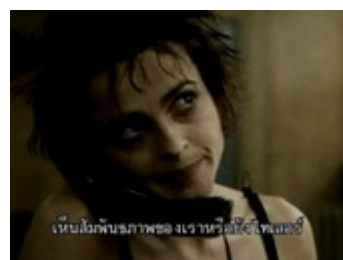
67.



68.



69.



70.



71.



72.



73.



74.



75.



76.

Appendix G

Reverse shot used to present the narrator's dark side (77-80)



77.



78.



79.



80.

Appendix H

Panning employed in (81-103) also presents the narrator's dark side.



81.



82.



83.



84.



85.



86.



87.



88.



89.



90.



91.



92.



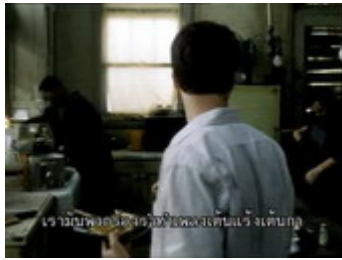
93.



94.



95.



96.



97.



98.



99.



100.



101.