

18. *Hedychium speciosum* Wall. in Roxb. Fl. Ind. 1:13.1820, in Pl. As. Rar. 3:51. t. 285. 1832; Bak. in Hook. f. Fl. Br. Ind. 6: 231. 1892; Schum. in Pflanzenreich 4.46:54. 1904.- *H. gardnerianum* Wall. in Kew Journ. Bot. 5:369 exp. 1853.- *H. gardnerianum*. var. *bitoran*. Monogr. 25. 1862.- *Gamochilus speciosus* (Wall.) Lestib. in Ann. Sc. Nat. 2. ser. 15:341. 1841.  
Fig. 18

*Leaves* sessile; blades oblong-lanceolate, c 37x8 cm, the apex long acuminate to caudate, the base cuneate, the upper surface glabrous, the lower surface glabrous or sparsely hairy; ligule oblong, c 2 cm long, hairy, the apex rounded. *Inflorescence* c 15 cm long, peduncle c 10 cm long; bracts oblong, c 3x1 cm, the apex rounded or broadly acute, glabrous except the apex; bracteoles tubular, 1.2-1.8 cm long, the apex acute, ciliate. *Flowers* 2 in each bract; *calyx* c 3.5 x 4 cm long, hairy, the apex 3-lobed; *corolla-tube* 5-6 cm long, glabrous, the lobes linear, the dorsal lobe c 5 cm long, the lateral lobes c 4.5 cm long. *staminodes* oblanceolate-linear, c 4.5x0.6 cm. the apex acute; *labellum* yellow, clawed or ovate-cuneate, the blade c 3 x 1.5 cm, the claw c 1.5 cm long, the apex rounded, entire or irregularly crenate or bilobed; *stamen*: filament c 6 cm long, the anther linear, curved, c 1.5 cm long, the basal appendages, c 4 mm long, anther-crest not beyond the thecae; *ovary* c 3x2 mm long, densely hairy; *stylodes* 2-3 mm long.

**Thailand.**- NORTHERN : Chiang Mai (Doi Chiang Dao, Doi Suthep).

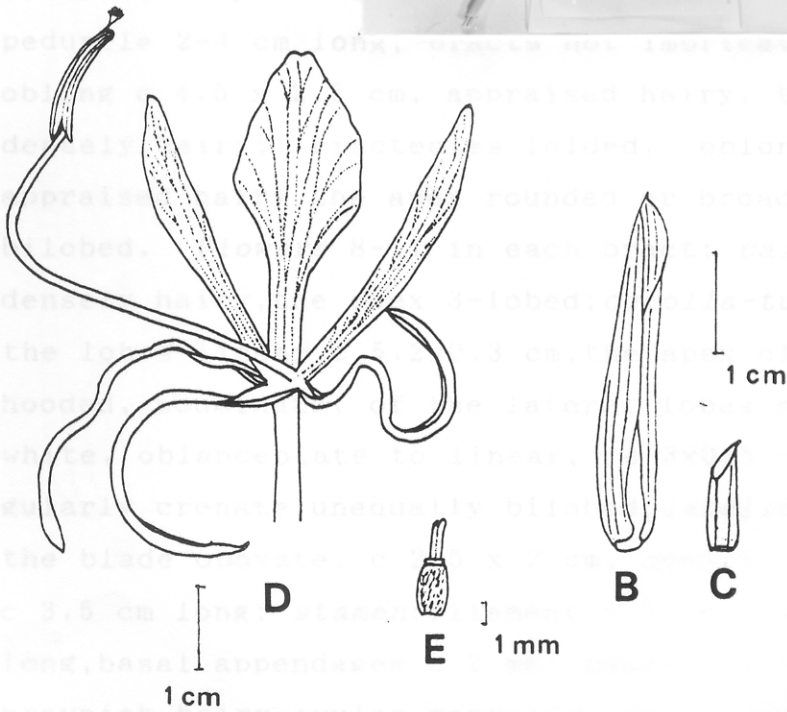
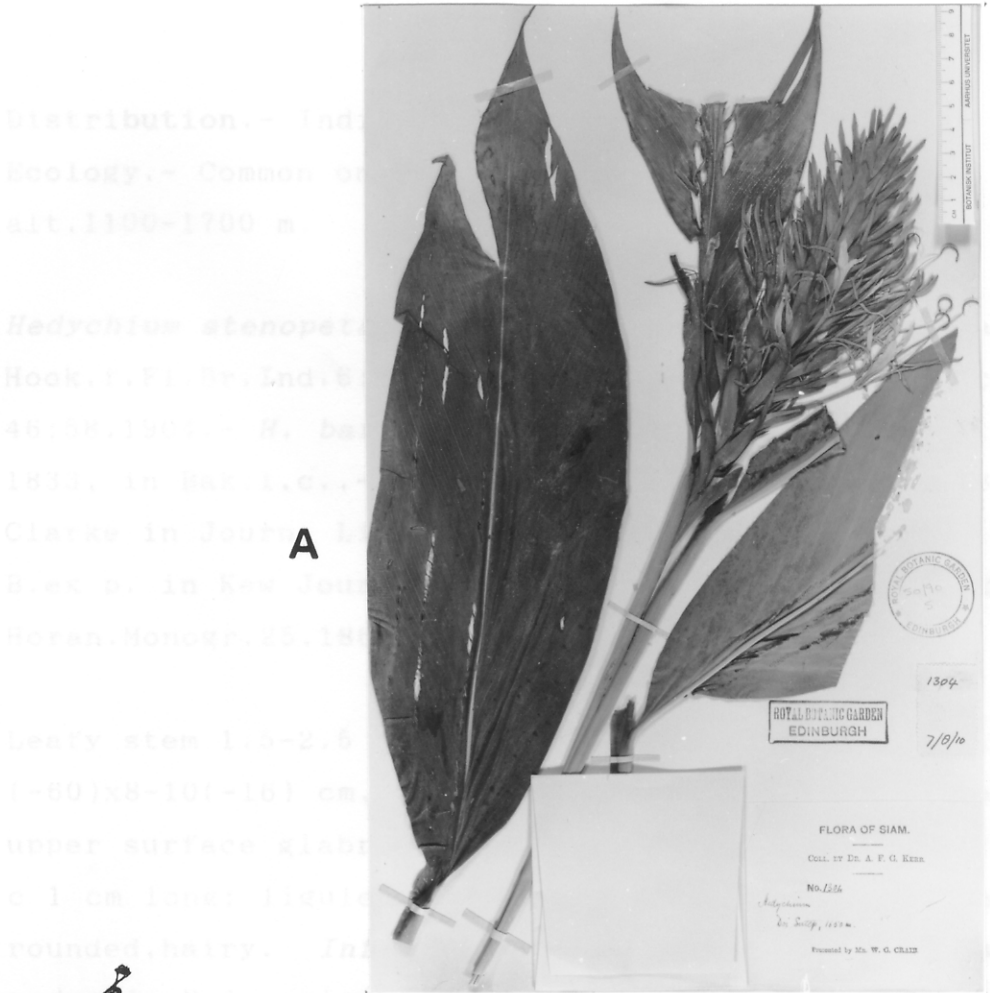


Fig.18. *Hedychium speciosum* - A: specimen, Kerr 1304; B: bract; C: bracteole; D: flower; E: ovary and stylodes.

**Distribution.**- India, (Silhet Gomez, type).

**Ecology.**- Common on limestone rocks in open grassy forest,  
alt. 1100-1700 m.