

5. *Hedychium erythrostemon* K.Schum, in Pflanzenreich 4.46: 47. 1904.- *H.aureum* K.Schum. in Engler's Bot.Jahrb.17: 340 (nomen tantum) non Bak.-Fig.5

Leafy stem 1-1.5 m tall, the basal part red. *Leaves* sessile; blades elliptic-oblong, 40-45x10-11 cm, the apex long acuminate, the base cuneate, both surfaces glabrous; ligule oblong, 7-10 cm long, 1.5 cm wide, glabrous, the apex acute. *Inflorescence*: spike 7-10 cm long, peduncle 3 - 4 cm long; bracts imbricate, the lower bracts empty, ovate-oblong, c 6.5-10x3-4 cm, glabrous, the apex rounded, the upper bracts oblong, c 9x3.7 cm, glabrous, the apex rounded with short hairy pointed; bracteoles tubular, surrounded the calyx-tube tightly, ribbed, c 5 cm long, glabrous except the apex and the base, the apex acute with densely long hairs; *Flower* one in each bract; *calyx* c 6 cm long, densely hairy, the apex acute, divided along one side; *corolla-tube* c 12 cm long, densely long hairy, lobes

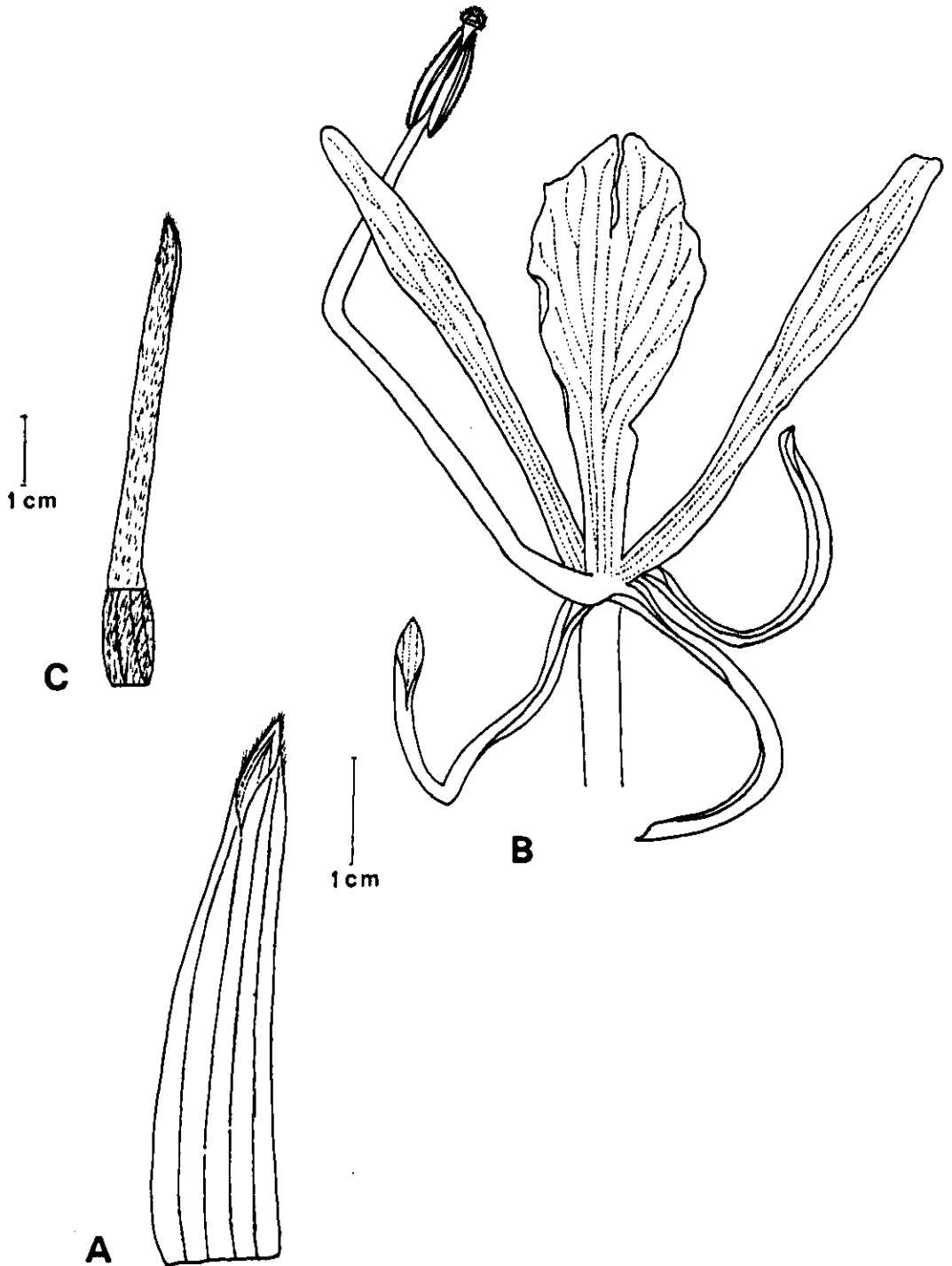


Fig.5. *Hedychium erythrostemon* - A: bracteole; B: flower;  
C: calyx and ovary.

linear, hairy at the base, the dorsal lobe c 5x0.5 cm, the lateral lobes slightly smaller; *staminodes* oblanceolate-linear, c 5 x 0.5 cm, the apex narrowly rounded or shallowly bilobed; *labellum* shortly clawed, obovate-cuneate, including claw c 4 cm long, at the widest c 1.6 - 2.2 wide, deeply divided, cleft to a depth of 1 cm; *stamen* : filament c 6.2 cm long, anther c 1 cm long, ciliate along the margins, basal appendages c 3 mm long ; *ovary* longitudinally ribbed, c 1.5x0.8 cm, densely hairy; ovules many.

**Thailand.**- SOUTH-WESTERN : Kanchanaburi (Dong Yai).

**Distribution.**- Malaysia (type).

**Ecology.**- In evergreen forest, alt. c.1000 m.