

## Glycerine

### Surface Area Report

BET Surface Area	31.841 sq.m/g
Correlation Coefficient	0.99871

### t-Plot Surface Area Report

t-Plot Surface Area Report	48.908 sq.m/g
Micropore Surface Area	0.000 sq.m/g
Micropore Volume	0.00000 ml/g
Correlation Coefficient	0.99151

### Adsorption BJH Pore Size Distribution

Pore Diameter Range (nm)	Pore Volume (ml/g)	%
Under 6	0.02703	14.83
6 – 8	0.01651	9.06
8 – 10	0.01075	5.90
10 – 12	0.01326	7.28
12 – 16	0.01748	9.59
16 – 20	0.02106	11.56
20 – 80	0.06995	38.39
Over 80	0.00616	3.38
BJH Total	0.18221	100.00

**Mannitol**

## Surface Area Report

BET Surface Area	17.684 sq.m/g
Correlation Coefficient	0.99812

## t-Plot Surface Area Report

t-Plot Surface Area Report	29.399 sq.m/g
Micropore Surface Area	0.000 sq.m/g
Micropore Volume	0.00000 ml/g
Correlation Coefficient	0.98739

## Adsorption BJH Pore Size Distribution

Pore Diameter Range (nm)	Pore Volume (ml/g)	%
Under 6	0.01800	15.77
6 – 8	0.01110	9.73
8 – 10	0.00740	6.48
10 – 12	0.00929	8.14
12 – 16	0.01262	11.06
16 – 20	0.01501	13.16
20 – 80	0.03836	33.61
Over 80	0.00233	2.05
BJH Total	0.11411	100.00

**Sucrose**

## Surface Area Report

BET Surface Area	9.802 sq.m/g
Correlation Coefficient	0.77800

## t-Plot Surface Area Report

t-Plot Surface Area Report	32.851 sq.m/g
Micropore Surface Area	0.000 sq.m/g
Micropore Volume	0.00000 ml/g
Correlation Coefficient	0.95984

## Adsorption BJH Pore Size Distribution

Pore Diameter Range (nm)	Pore Volume (ml/g)	%
Under 6	0.02913	24.58
6 – 8	0.01498	12.64
8 – 10	0.00831	7.01
10 – 12	0.00901	7.60
12 – 16	0.01055	8.90
16 – 20	0.01083	9.13
20 – 80	0.03221	27.18
Over 80	0.00349	2.95
BJH Total	0.11851	100.00

**Glucose**

## Surface Area Report

BET Surface Area	26.306 sq.m/g
Correlation Coefficient	0.99980

## t-Plot Surface Area Report

t-Plot Surface Area Report	31.723 sq.m/g
Micropore Surface Area	0.000 sq.m/g
Micropore Volume	0.00000 ml/g
Correlation Coefficient	0.98891

## Adsorption BJH Pore Size Distribution

Pore Diameter Range (nm)	Pore Volume (ml/g)	%
Under 6	0.02029	13.12
6 – 8	0.01400	9.05
8 – 10	0.00973	6.29
10 – 12	0.01289	8.33
12 – 16	0.01735	11.22
16 – 20	0.02067	13.37
20 – 80	0.05666	36.64
Over 80	0.00305	1.97
BJH Total	0.15463	100.00

**Fructose**

## Surface Area Report

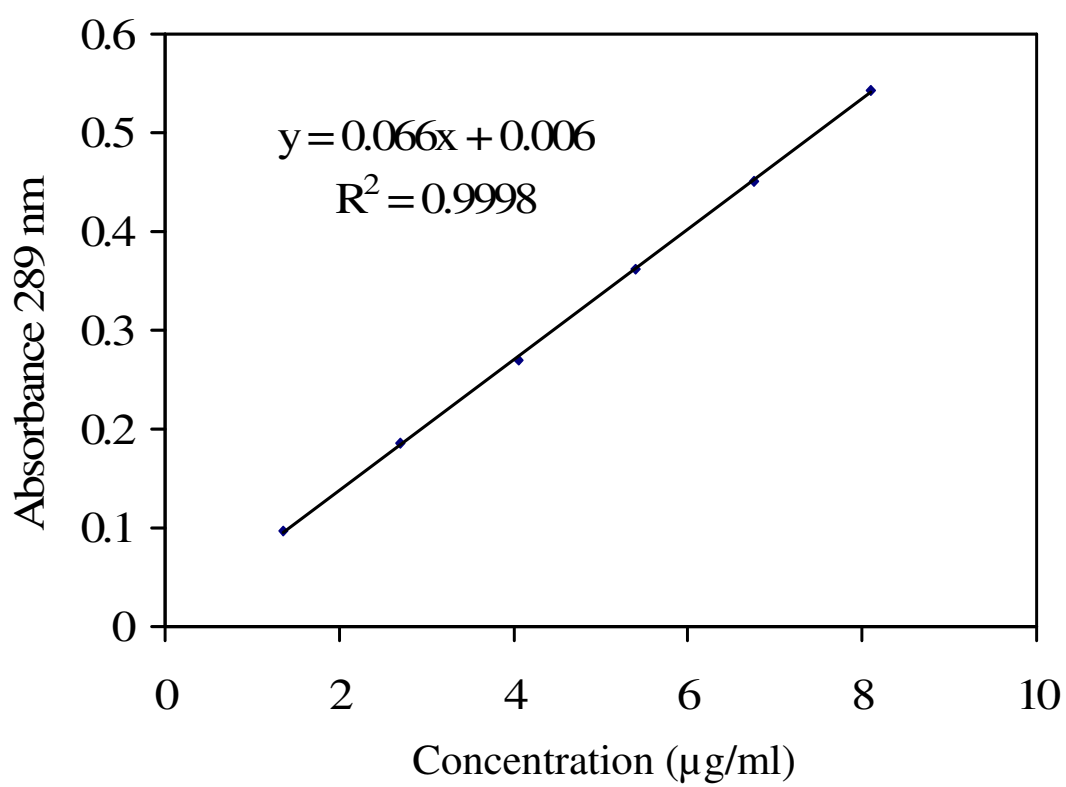
BET Surface Area	17.357 sq.m/g
Correlation Coefficient	0.99792

## t-Plot Surface Area Report

t-Plot Surface Area Report	28.758 sq.m/g
Micropore Surface Area	0.000 sq.m/g
Micropore Volume	0.00000 ml/g
Correlation Coefficient	0.98864

## Adsorption BJH Pore Size Distribution

Pore Diameter Range (nm)	Pore Volume (ml/g)	%
Under 6	0.01652	15.17
6 – 8	0.01025	9.41
8 – 10	0.00729	6.69
10 – 12	0.00924	8.48
12 – 16	0.01224	11.23
16 – 20	0.01455	13.35
20 – 80	0.03546	32.55
Over 80	0.00339	3.12
BJH Total	0.10894	100.00



**Figure 11.** Standard curve of chlorhexidine digluconate